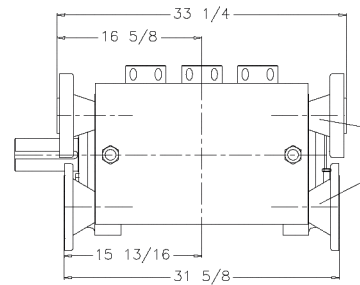
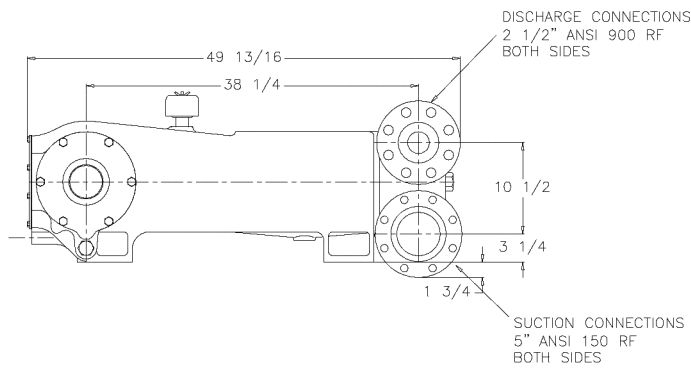
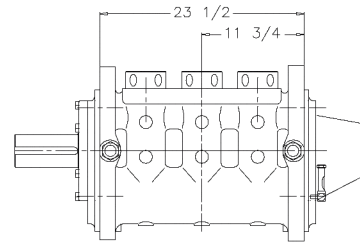
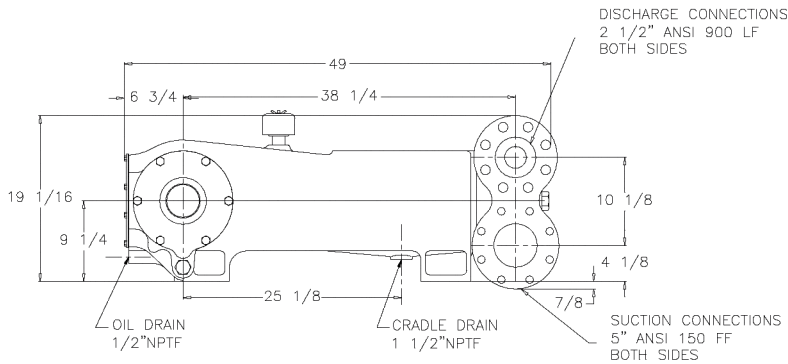
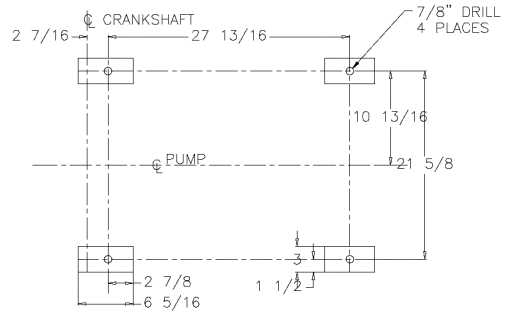
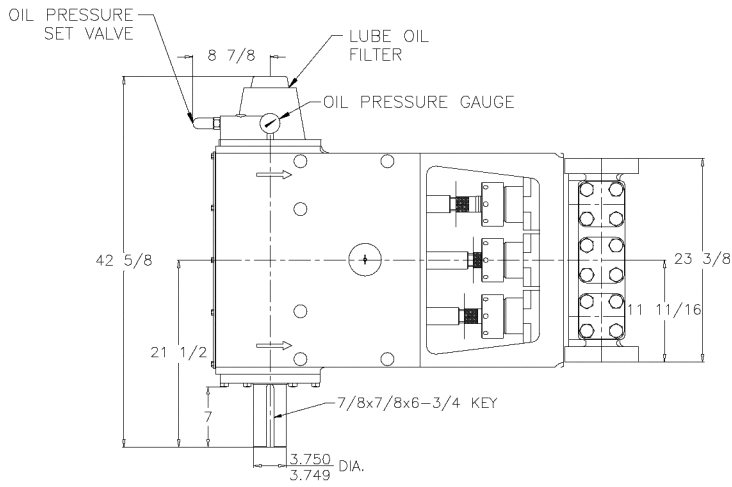


MA-120L-HD Triplex Pump



ENGINEERING DATA

MA-120L-HD Triplex Pump

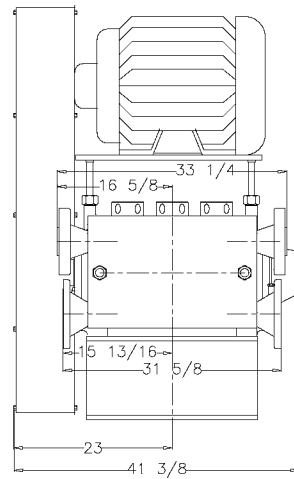
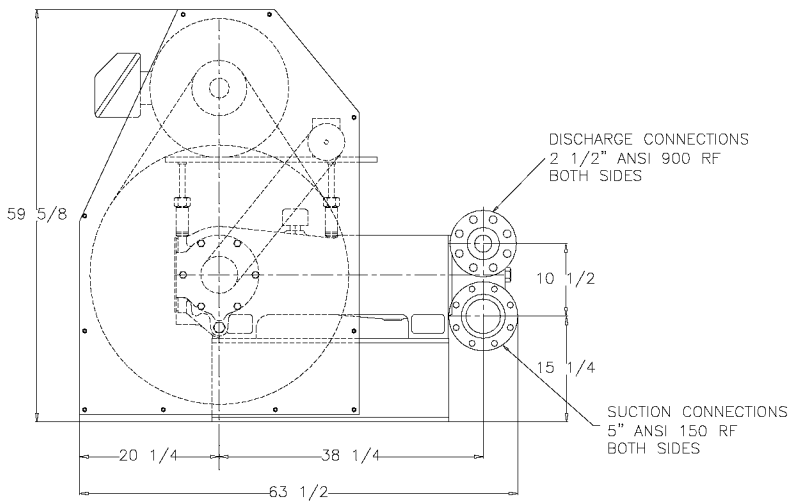
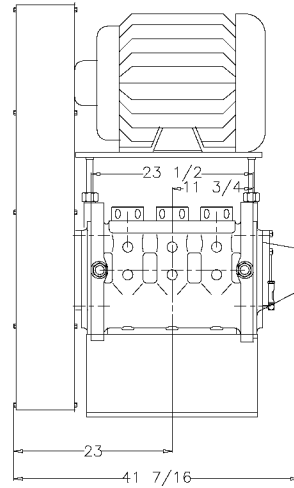
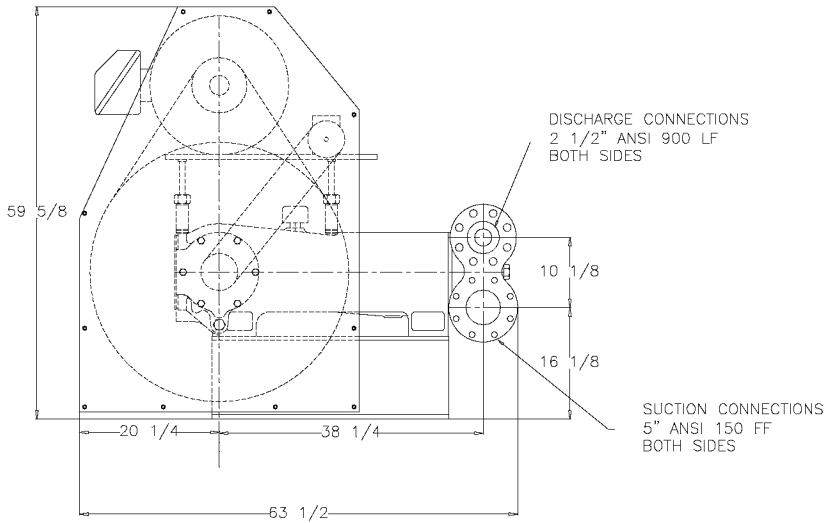
POWER END ENGINEERING DATA

Max. Input HP @ Speed	144 @ 450 RPM
Rated Continuous Plunger Load	8937 lb.
Max. Rated Continuous Speed	450 RPM
Normal Continuous Speed Range	150 to 420 RPM
Minimum Speed	100 RPM
Oil Capacity	18 U.S. Qrts
Power End Oiling System	Pressure Lubrication
Power Frame, One-Piece	Cast Iron
Crosshead, Full Cylindrical	Cast Iron
Crosshead, Dia. x Length	5 3/4 x 6 3/16 inches
Crankshaft	Forged and Nitrided Chrome Moly Steel
Crankshaft Diameters:	
At Tapered Roller Bearings	4 in.
At Crankpin Bearings, Dia. x Length	4 x 3 inches
Crosshead (Wrist) Pin, Case-Hardened and Ground	AISI 8620
Main Bearings, Tapered Roller	Timken®
Crankpin Bearings, Precision Automotive	Steel Backed, Babbitt-Lined
Extension (Pony) Rod, Integral w/ Plungers	316 S.S.
Connecting Rod, Automotive Type	Ductile Iron
Average Crosshead Speed @ 450 rpm	318 fpm
Minimum Life Expectancy, Main Bearings, L ₁₀	35,000+ hr.

LIQUID END ENGINEERING DATA

Max. Continuous Working Pressure	1,682 psi
Hydrostatic Test	2,523 psi
Available Liquid End Materials, A.S.T.M.	
Nickel Aluminum Bronze Casting	B148-C955
Carbon Steel Block	A105
Stainless Steel Block	Various Grades
Ductile Iron Casting	A536 80-55-06
Plunger Type "Rokide" (Chromium Oxide-Coated)	316 S.S.
Stuffing Boxes, Field-Removable and Replaceable	Nickel Aluminum Bronze or Carbon Steel or S.S.
Packing Types Available	
Gland-loaded, Non-Adjustable	Style 838
Spring-loaded, Braided Teflon & Kevlar	Style 140
Spring-loaded, cup-type	Style 120X
Spring-loaded, Garlock	Style 892IK
Valve Cover and Cyl. Head Plugs	316 S.S.
Retainer Plates, Ductile Iron, A.S.T.M.	A536 80-55-06
Seals, Stuffing Boxes, Valve Covers, Cyl. Heads	Buna-N
Disc Valve Types	
Regularly furnished, acetal resin	Delrin®
Optional, Hardened and Lapped	17-4 PH S.S.
Valve Spring material	Inconel®
Valve Seat, Liquid Passage Areas	6.26 sq.in.
Avg. Liquid Velocity with 3 1/2" plungers @ 450 rpm	
thru Disc Valves	7.26 fps
thru Suction Manifold	3.82 fps
thru Discharge Manifold	18.09 fps

MA-120L-HD Triplex Pump



740 EAST 9TH STREET,
ASHLAND, OHIO 44805
WWW.MYERSAPLEX.COM

269 TRILLIUM DRIVE, KITCHENER,
ONTARIO, CANADA N2G 4W5
WWW.MYERSAPLEX.COM

Delrin® is a registered trademark of E.L. duPont
Inconel® is a registered trademark of the Special Metals family of companies
Timken® is a registered trademark of The Timken Company
Myers® is a registered trademark of Pentair Ltd.

Because we are continuously improving our products and services, Pentair reserves the right to change specifications without prior notice.
MA1020-HD 03/06/13 © 2013 Pentair Ltd. All Rights Reserved.

www.powerzone.com