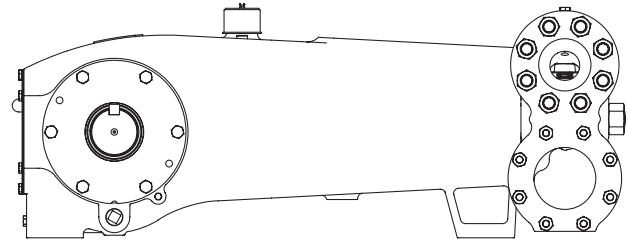


MYERS® APLEX SERIES

MA-300M

QUINTUPLEX PLUNGER PUMP



Number of Plungers.....5
 Maximum Rated Speed.....400 RPM
 Stroke Length 5.00 inches – 127 mm
 Maximum Rated Power.....300.0 HP – 224 kW
 Maximum Rod Load.....10,700 lbs. – 47.6 kN
 Weight.....4,925 lbs.

English Units

PLUNGER SIZE IN.	STUFFING BOX BORE IN.	MAX. PSI	*GALLON PER REV.	200 RPM US GPM	250 RPM US GPM	300 RPM US GPM	350 RPM US GPM	400 RPM US GPM
2.875	4.000	1648	0.7026	140.5	175.6	210.8	245.9	281.0
2.750	3.500	1801	0.6428	128.6	160.7	192.8	225.0	257.1
2.625	3.500	1977	0.5857	117.1	146.4	175.7	205.0	234.3
2.500	3.500	2180	0.5313	106.3	132.8	159.4	185.9	212.5
2.375	3.500	2415	0.4795	95.9	119.9	143.8	167.8	191.8
2.250	3.000	2691	0.4303	86.1	107.6	129.1	150.6	172.1
2.125	3.000	3017	0.3838	76.8	96.0	115.1	134.3	153.5
2.000	3.000	3406	0.3400	68.0	85.0	102.0	119.0	136.0
1.875	3.000	3600	0.2988	59.8	74.7	89.6	104.6	119.5
1.750	3.000	3600	0.2603	52.1	65.1	78.1	91.1	104.1
<i>HP REQUIRED @ RPM**</i>				150	188	225	263	300

Metric Units

PLUNGER SIZE mm	STUFFING BOX BORE mm	MAX. PRESS. BAR	*LITERS PER REV.	200 RPM LPM	250 RPM LPM	300 RPM LPM	350 RPM LPM	400 RPM LPM
73.0	101.6	113.6	2.6596	531.9	664.9	797.9	930.8	1063.8
69.9	88.9	124.2	2.4333	486.7	608.3	730.0	851.7	973.3
66.7	88.9	136.3	2.2171	443.4	554.3	665.1	776.0	886.8
63.5	88.9	150.3	2.0110	402.2	502.8	603.3	703.9	804.4
60.3	88.9	166.5	1.8149	363.0	453.7	544.5	635.2	726.0
57.2	76.2	185.5	1.6289	325.8	407.2	488.7	570.1	651.6
54.0	76.2	208.0	1.4530	290.6	363.2	435.9	508.5	581.2
50.8	76.2	234.8	1.2870	257.4	321.8	386.1	450.5	514.8
47.6	76.2	248.2	1.1312	226.2	282.8	339.4	395.9	452.5
44.5	76.2	248.2	0.9854	197.1	246.3	295.6	344.9	394.2
<i>kW REQUIRED @ RPM**</i>				112	140	168	196	224

*Displacement based on 100% Volumetric Efficiency

**Power based on 90% Mechanical Efficiency

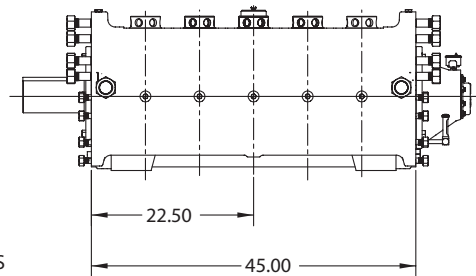
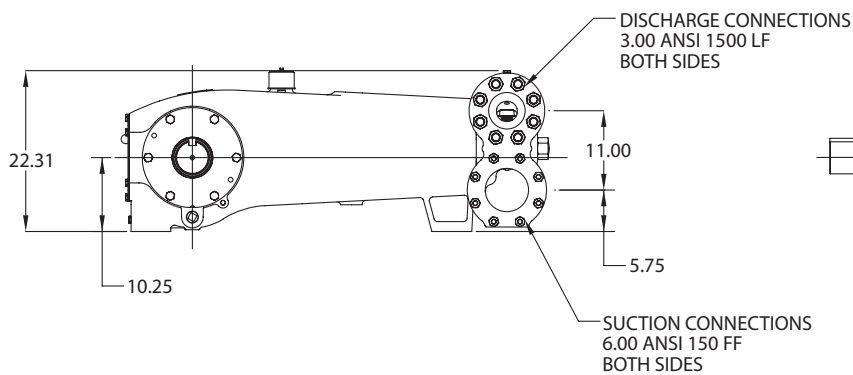
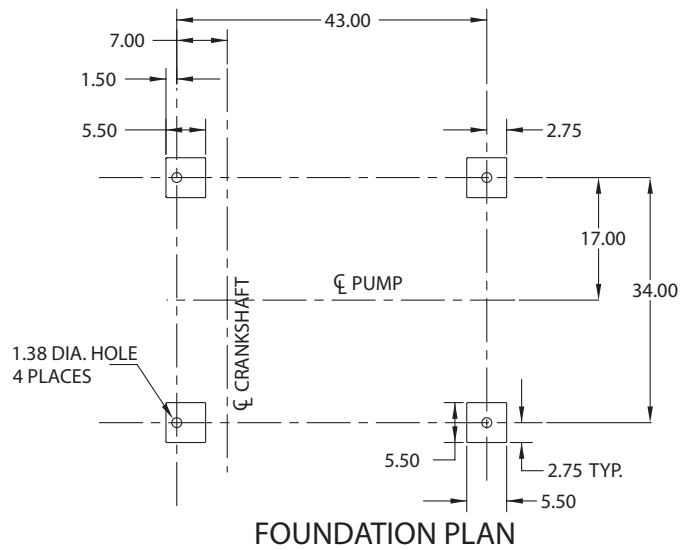
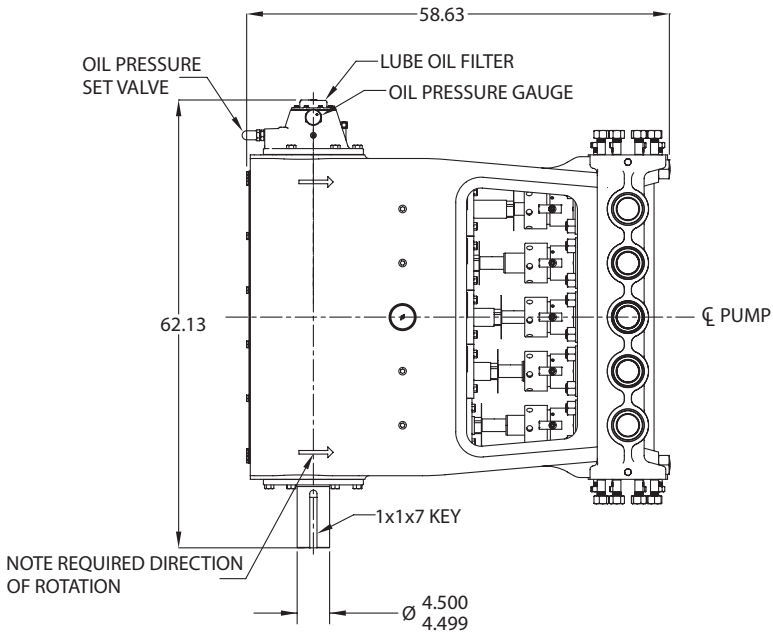
$$HP = \frac{US\ GPM \times (Discharge\ psig - 1/2\ Suction\ psig)}{1542}$$

$$kW = \frac{M^3/HR \times (Discharge\ Bar - 1/2\ Suction\ Bar)}{32.4}$$

$$PUMP\ RPM = \frac{US\ GPM\ Desired}{US\ GPM\ per\ Revolution\ of\ Selected\ Plunger}$$

$$PUMP\ RPM = \frac{M^3/HR\ Desired}{M^3\ per\ Revolution\ of\ Selected\ Plunger}$$

MA-300M Quintuplex Pump



Engineering Data

MA-300M Quintuplex Pump

Power End Engineering Data

Maximum Input HP @ Speed.....	300 @ 400 RPM
Rated Continuous Plunger Load	10,700 lbs.
Maximum Rated Continuous Speed.....	400 RPM
Normal Continuous Speed Range.....	150 to 400 RPM
Minimum Speed	100 RPM
Oil Capacity.....	66 U.S. Quarts
Power End Oiling System.....	Pressure Lubrication System
Power Frame, One-Piece.....	Cast Iron
Crosshead, Full Cylindrical.....	Cast Iron
Crosshead, Diameter x Length.....	5-3/4 x 6-3/16 inches
Crankshaft.....	Ductile Iron
Crankshaft Diameters:	
At Tapered Roller Bearings	4-3/4 inches
At Crankpin Bearings, Diameter x Length	4-1/2 x 3-3/4 inches
Crosshead (Wrist) Pin, Case-Hardened and Ground.....	AISI 8620
Main Bearings, Tapered Roller.....	Timken®
Crankpin Bearings, Precision Automotive	Steel Backed, Babbitt-Lined
Extension (Pony) Rod, Integral with Plungers	17-4 PH SS
Connecting Rod, Automotive Type	Ductile Iron
Average Crosshead Speed @ 450 RPM	333 fpm
Minimum Life Expectancy, Main Bearings, L ₁₀	65,000+ hr.

Liquid End Engineering Data

Maximum Continuous Working Pressure.....	3,600 psi
Hydrostatic Test.....	5,558 psi
Available Liquid End Materials, ASTM:	
Nickel Aluminum Bronze Casting.....	B148-C955
Carbon Steel Block.	A105
Stainless Steel Block	Various Grades
Plunger Type Rokide (Chromium Oxide-Coated)	316 SS
Stuffing Boxes, Field-Removable and Replaceable	Nickel, Aluminum, Bronze; Optional Carbon Steel
Packing Types Available:	
Gland-Loaded, Non-Adjustable.....	Style 838
Spring-Loaded, Braided Teflon® & Kevlar®	Style 140
Spring-Loaded, Cup-Type	Style 120X
Spring-Loaded, Garlock	Style 8921K
Valve Cover and Cylinder Head Plugs.....	316 SS
Retainer Plates, Ductile Iron, ASTM.....	A536 80-55-06
Seals, Stuffing Boxes, Valve Covers, Cylinder Heads	Buna-N
Disc Valve Types:	
Regularly Furnished, Acetal Resin	Delrin®
Optional, Hardened and Lapped.....	17-4 PH SS
Valve Spring Material.....	Inconel®
Valve Seat, Liquid Passage Area	3.86 square inches
Average Liquid Velocity with 2 7/8" Plungers @ 400 RPM:	
Through Valves	10.8 fps
Through Suction Manifold.....	3.2 fps
Through Discharge Manifold.....	12.7 fps



740 EAST 9TH STREET,
ASHLAND, OHIO 44805
WWW.MYERSAPLEX.COM

269 TRILLIUM DRIVE, KITCHENER,
ONTARIO, CANADA N2G 4W5
WWW.MYERSAPLEX.COM

Delrin® is a registered trademark of E.L. duPont
Inconel® is a registered trademark of the Special Metals family of companies
Timken® is a registered trademark of The Timken Company
Myers® is a registered trademark of Pentair Ltd.

Because we are continuously improving our products and services, Pentair reserves the right to change specifications without prior notice.
MA300M 03/15/13 © 2013 Pentair Ltd. All Rights Reserved.

www.powerzone.com