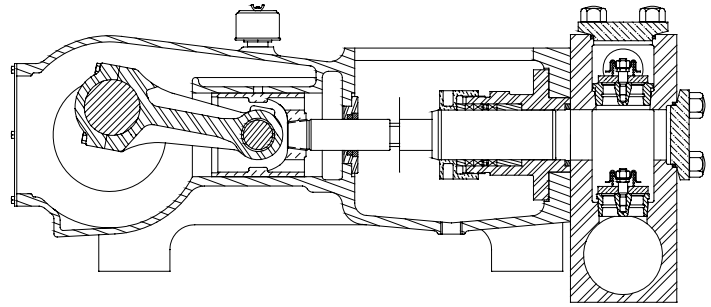


# MYERS® APLEX SERIES

## MA-155M

### TRIPLEX PLUNGER PUMP



No. of plungers .....	3
Maximum rated speed .....	450 rpm
Stroke length.....	4.50 in.      114.3 mm
Maximum rated power.....	155.0 HP      115.5 KW
Maximum rod load .....	9087 lb.      40.3 kN
Weight .....	2500 lbs.

#### ENGLISH UNITS

#### MA-155M

PLUNGER SIZE IN.	STUFFING BOX BORE IN.	MAX PSI.	*GALLON PER/REV.	250 RPM US GPM	300 RPM US GPM	350 RPM US GPM	400 RPM US GPM	450 RPM US GPM
2.750	3.500	1530	0.347	86.8	104.1	121.5	138.8	156.2
2.625	3.500	1679	0.316	79.1	94.9	110.7	126.5	142.3
2.500	3.500	1852	0.287	71.7	86.1	100.4	114.8	129.1
2.375	3.500	2051	0.259	64.7	77.7	90.6	103.6	116.5
2.250	3.000	2286	0.232	58.1	69.7	81.3	92.9	104.6
2.125	3.000	2562	0.207	51.8	62.2	72.5	82.9	93.3
2.000	3.000	2892	0.184	45.9	55.1	64.3	73.4	82.6
1.875	3.000	3291	0.161	40.3	48.4	56.5	64.5	72.6
1.750	3.000	3600	0.141	35.1	42.2	49.2	56.2	63.3

HP REQUIRED @ RPM**	86.1	103.3	120.5	137.8	155.0
---------------------	------	-------	-------	-------	-------

#### METRIC UNITS

#### MA-155M

PLUNGER SIZE MM.	STUFFING BOX BORE MM.	MAX PRESS. BAR	* LITER PER/REV.	250 RPM LPM	300 RPM LPM	350 RPM LPM	400 RPM LPM	450 RPM LPM
69.9	88.9	105.5	1.314	328.5	394.2	459.9	525.6	591.3
66.7	88.9	115.7	1.197	299.3	359.2	419.1	478.9	538.8
63.5	88.9	127.6	1.086	271.5	325.8	380.1	434.4	488.7
60.3	88.9	141.4	0.980	245.0	294.0	343.0	392.0	441.0
57.2	76.2	157.6	0.880	219.9	263.9	307.9	351.9	395.9
54.0	76.2	176.6	0.785	196.2	235.4	274.6	313.9	353.1
50.8	76.2	199.4	0.695	173.8	208.5	243.2	278.0	312.8
47.6	76.2	226.8	0.611	152.8	183.3	213.8	244.4	274.9
44.5	76.2	248.2	0.532	133.1	159.7	186.3	212.9	239.5

KW REQUIRED @ RPM**	64.2	77.0	89.9	102.8	115.6
---------------------	------	------	------	-------	-------

\*Displacement based on 100% Volumetric Efficiency

\*\*Power based on 90% Mechanical Efficiency

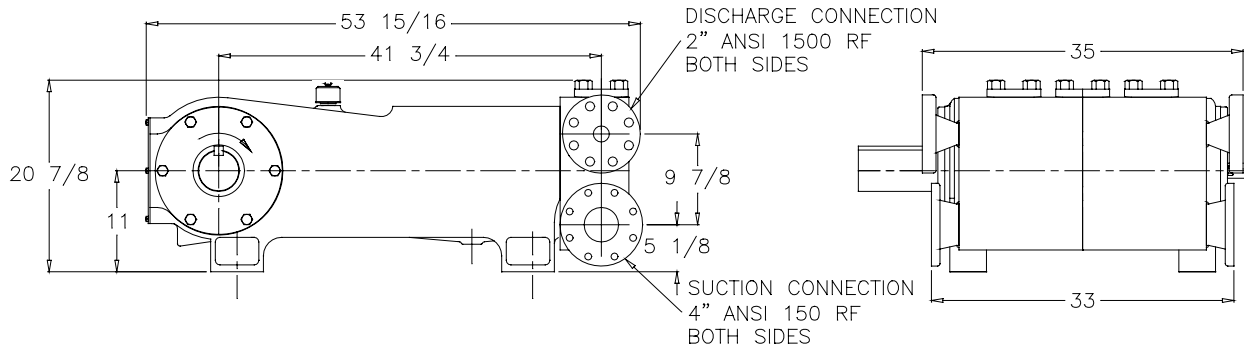
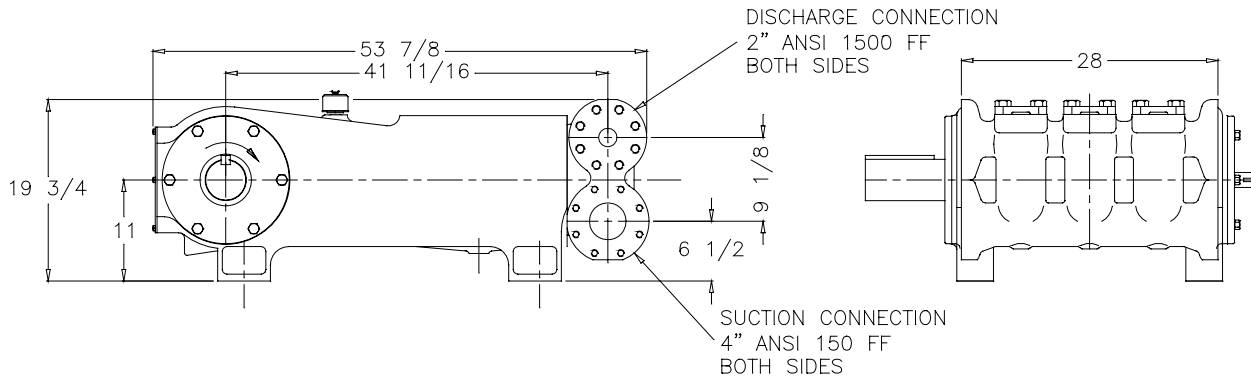
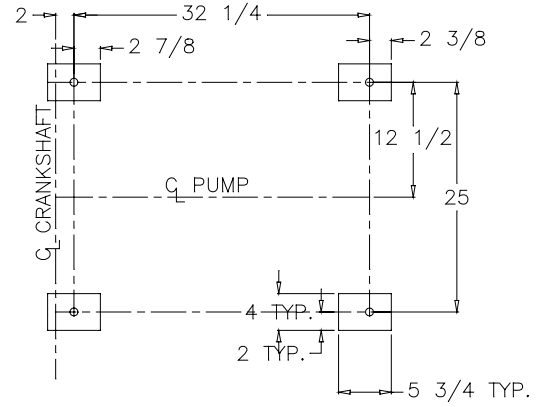
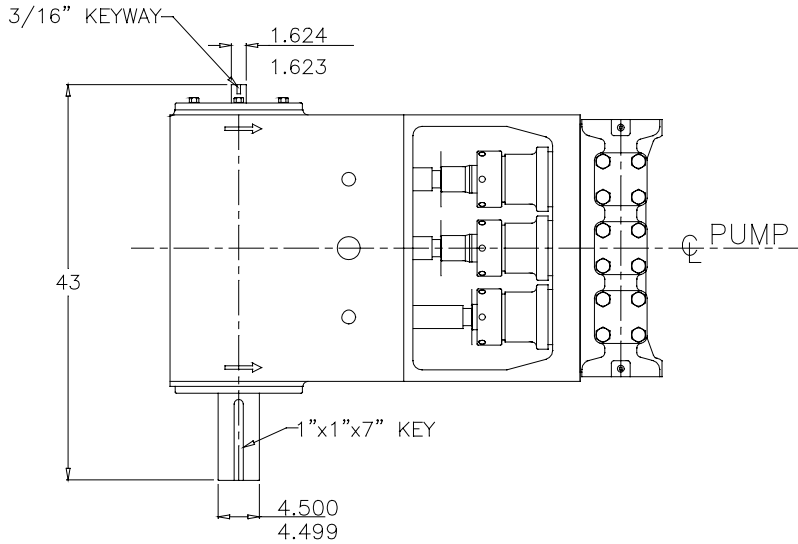
$$IHP = \frac{USGPM \times (Discharge \text{ psig} - 1/2 \text{ Suction psig})}{1542}$$

$$IKW = \frac{M^3/HR \times (Discharge \text{ Bar} - 1/2 \text{ Suction Bar})}{17.99}$$

$$PUMP \text{ RPM} = \frac{USGPM \text{ Desired}}{USGPM \text{ per Revolution of Selected Plunger}}$$

$$PUMP \text{ RPM} = \frac{M^3/HR \text{ Desired}}{M^3 \text{ per Revolution of Selected Plunger}}$$

# MA-155M Triplex Pump



# ENGINEERING DATA

## MA-155M Triplex Pump

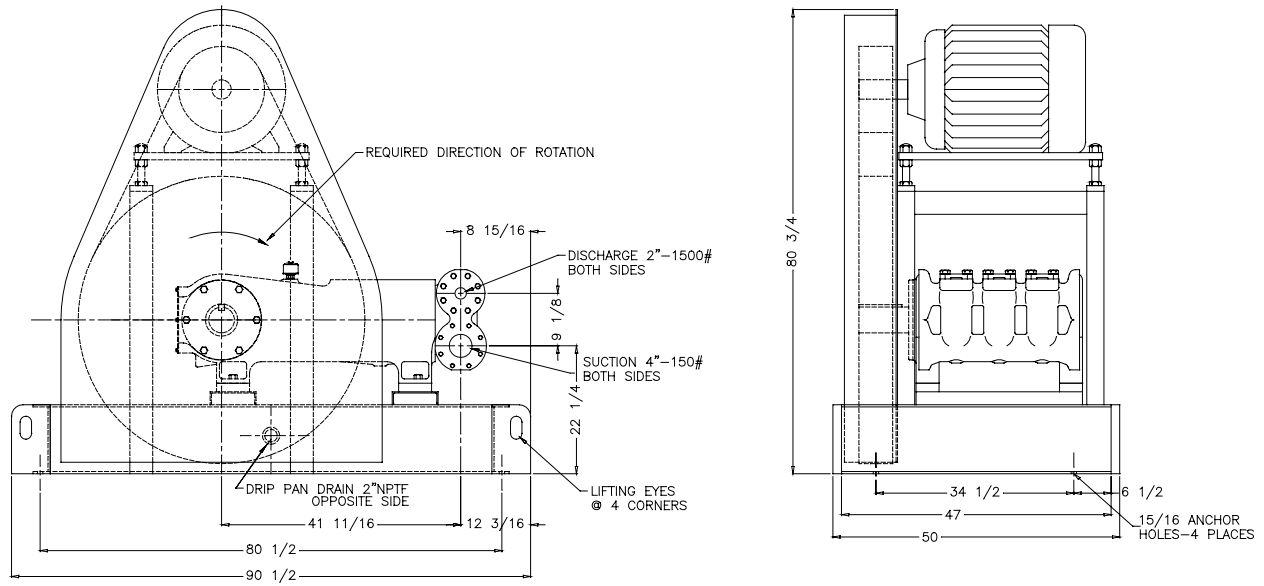
### POWER END ENGINEERING DATA

Max. Input HP @ Speed .....	155 @ 450 RPM
Rated Continuous Plunger Load .....	9,087 lb.
Max. Rated Continuous Speed .....	450 RPM
Normal Continuous Speed Range .....	150 to 420 RPM
Minimum Speed .....	100 RPM
Oil Capacity .....	22 U.S. Qrts
Power End Oiling System .....	Splash
Power Frame, One-Piece .....	Cast Iron
Crosshead, Full Cylindrical .....	Cast Iron
Crosshead, Dia. x Length .....	5 3/4 x 6 3/16 inches
Crankshaft .....	Ductile Iron
Crankshaft Diameters:	
At Tapered Roller Bearings .....	4 3/4 in.
At Crankpin Bearings, Dia. x Length .....	4 1/2 x 3 3/4 inches
Crosshead (Wrist) Pin, Case-Hardened and Ground .....	AISI 8620
Main Bearings, Tapered Roller .....	Timken®
Crankpin Bearings, Precision Automotive .....	Steel Backed, Babbitt-Lined
Extension (Pony) Rod, Integral w/ Plungers .....	316 S.S.
Connecting Rod, Automotive Type .....	Ductile Iron
Average Crosshead Speed @ 450 rpm .....	338 fpm
Minimum Life Expectancy, Main Bearings, L <sub>10</sub> .....	60,000+ hr.

### LIQUID END ENGINEERING DATA

Max. Continuous Working Pressure .....	3600 psi
Hydrostatic Test .....	5400 psi
Available Liquid End Materials, A.S.T.M.	
Stainless Steel Block .....	Various Grades
Nickel Aluminum Bronze Casting .....	B148-C955
Forged Steel Block .....	A105.
Plunger Type Rokide® (Chromium Oxide-Coated) .....	316 S.S.
Stuffing Boxes, Field-Removable and Replaceable	
Nickel Aluminum Bronze .....	B148-C955
Carbon Steel .....	1020
Packing Types Available	
Gland-loaded, Non-Adjustable .....	Style 838
Spring-loaded, Braided Teflon® & Kevlar® .....	Style 140
Spring-loaded, cup-type .....	Style 120X
Seals, Stuffing Boxes, Valve Covers, Cyl. Heads .....	Buna-N
Disc Valve Types:	
Regularly furnished, acetal resin .....	Delrin®
Optional, Hardened and Lapped, .....	17-4 PH S.S.
Valve Spring material .....	Inconel®
Valve Seat, Liquid Passage Areas	
Plate (disc) Valves, (Delrin or S.S.) .....	3.9 sq.in.
Avg. Liquid Velocity with 2 3/4" plunger @ 450 rpm	
thru Valves .....	8.5fps
thru Suction Manifold .....	3.9 fps
thru Discharge Manifold .....	16.9 fps

# MA-155M Triplex Pump



740 EAST 9TH STREET,  
ASHLAND, OHIO 44805  
WWW.FEMYERS.COM

490 PINEBUSH ROAD, UNIT 4,  
CAMBRIDGE, ONTARIO N1T 0A5  
WWW.FEMYERS.COM

Delrin®, Teflon® and Kevlar® are registered trademarks of E. I. du Pont de Nemours and Company.

Inconel® is a registered trademark of the Special Metals family of companies.

Timken® is a registered trademark of The Timken Company. Rokide® is a registered trademark of Saint-Gobain Abrasives, Inc.

Myers® is a registered trademark of Pentair.

Because we are continuously improving our products and services, Pentair reserves the right to change specifications without prior notice.

MA1026 01/15/14 © 2014 Pentair Ltd. All Rights Reserved.

[www.powerzone.com](http://www.powerzone.com)