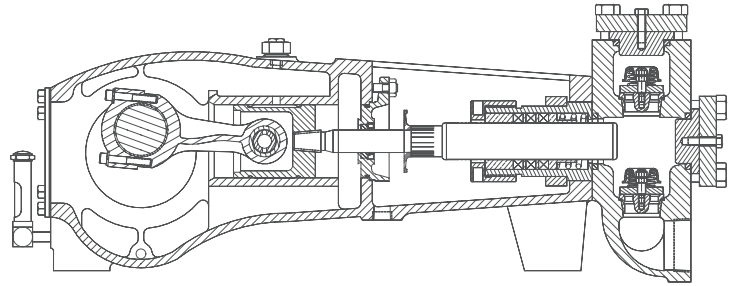


MYERS® APLEX SERIES

MA-15M

TRIPLEX PLUNGER PUMP



No. of plungers.....	3
Maximum rated speed.....	650 rpm
Stroke length.....	1.50 in. 38.1 mm
Maximum rated power.....	15.0 HP 11.2 KW
Maximum rod load	1828 lb. 8.04 kN
Weight.....	235 lbs.

ENGLISH UNITS

MA-15M

PLUNGER SIZE (IN.)	STUFFING BOX BORE(IN.)	MAX PSI.	*GALLON PER/REV.	250 RPM US GPM	350 RPM US GPM	450 RPM US GPM	550 RPM US GPM	650 RPM US GPM
1.625	2.125	881	0.040	10.1	14.1	18.2	22.2	26.3
1.500	2.125	1034	0.034	8.6	12.0	15.5	18.9	22.4
1.375	2.125	1231	0.029	7.2	10.1	13.0	15.9	18.8
1.250	2.125	1489	0.024	6.0	8.4	10.8	13.1	15.5
1.125	1.750	1839	0.019	4.8	6.8	8.7	10.7	12.6
1.000	1.750	2327	0.015	3.8	5.4	6.9	8.4	9.9
0.875	1.500	3040	0.012	2.9	4.1	5.3	6.4	7.6

*HP REQUIRED @ RPM***

5.8	8.1	10.4	12.7	15.0
-----	-----	------	------	------

METRIC UNITS

MA-15M

PLUNGER SIZE MM.	STUFFING BOX BORE MM.	MAX PRESS. BAR	* LITER PER/REV.	250 RPM LPM	350 RPM LPM	450 RPM LPM	550 RPM LPM	650 RPM LPM
41.3	54.0	61	0.153	38.2	53.5	68.8	84.1	99.4
38.1	54.0	71	0.130	32.6	45.6	58.6	71.6	84.6
34.9	54.0	85	0.109	27.3	38.3	49.2	60.2	71.1
31.8	54.0	103	0.091	22.6	31.7	40.7	49.8	58.8
28.6	44.5	127	0.073	18.4	25.7	33.0	40.4	47.7
25.4	44.5	161	0.058	14.5	20.3	26.1	31.8	37.6
22.2	38.1	210	0.044	11.1	15.5	19.9	24.4	28.8

*KW REQUIRED @ RPM***

4.3	6.0	7.8	9.5	11.1
-----	-----	-----	-----	------

**Displacement based on 100% Volumetric Efficiency*

***Power based on 90% Mechanical Efficiency*

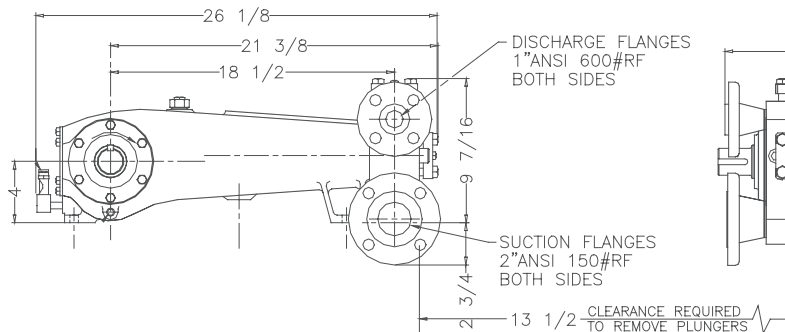
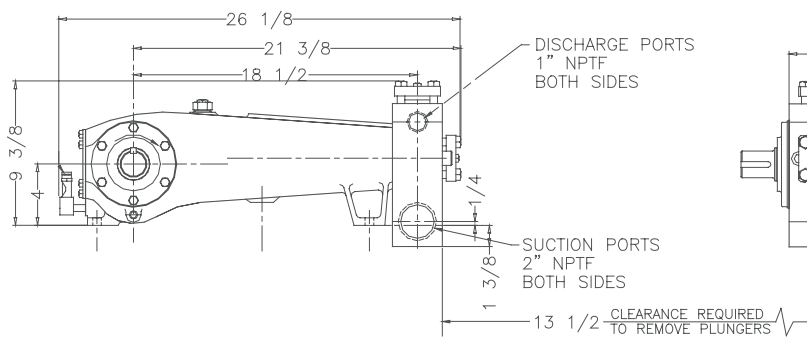
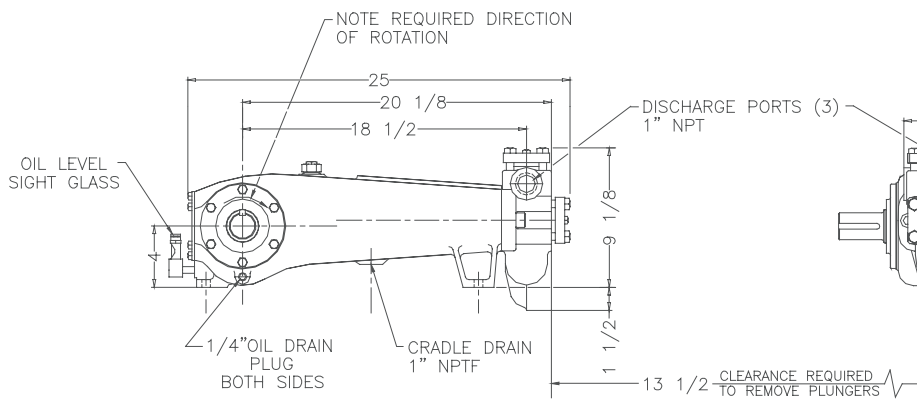
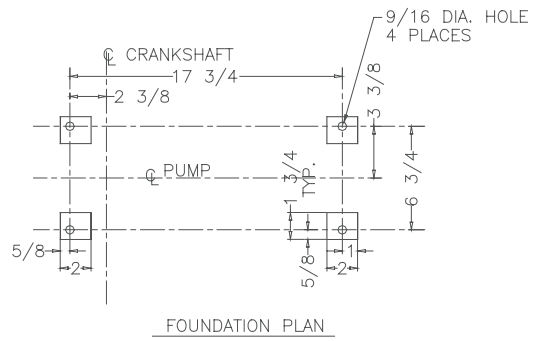
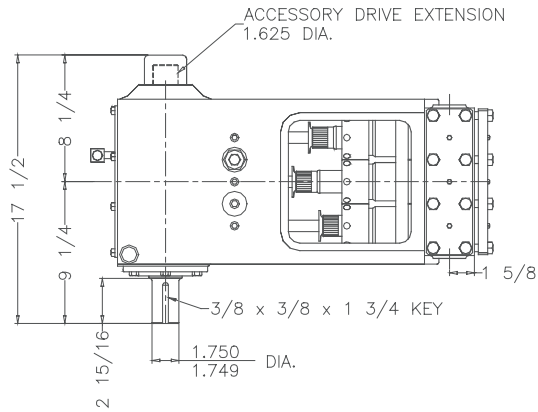
$$IHP = \frac{USGPM \times (\text{Discharge psig} - 1/2 \text{ Suction psig})}{1542}$$

$$IKW = \frac{M^3/HR \times (\text{Discharge Bar} - 1/2 \text{ Suction Bar})}{17.99}$$

$$PUMP \text{ RPM} = \frac{USGPM \text{ Desired}}{USGPM \text{ per Revolution of Selected Plunger}}$$

$$PUMP \text{ RPM} = \frac{M^3/HR \text{ Desired}}{M^3 \text{ per Revolution of Selected Plunger}}$$

MA-15M Triplex Pump



ENGINEERING DATA

MA-15M Triplex Pump

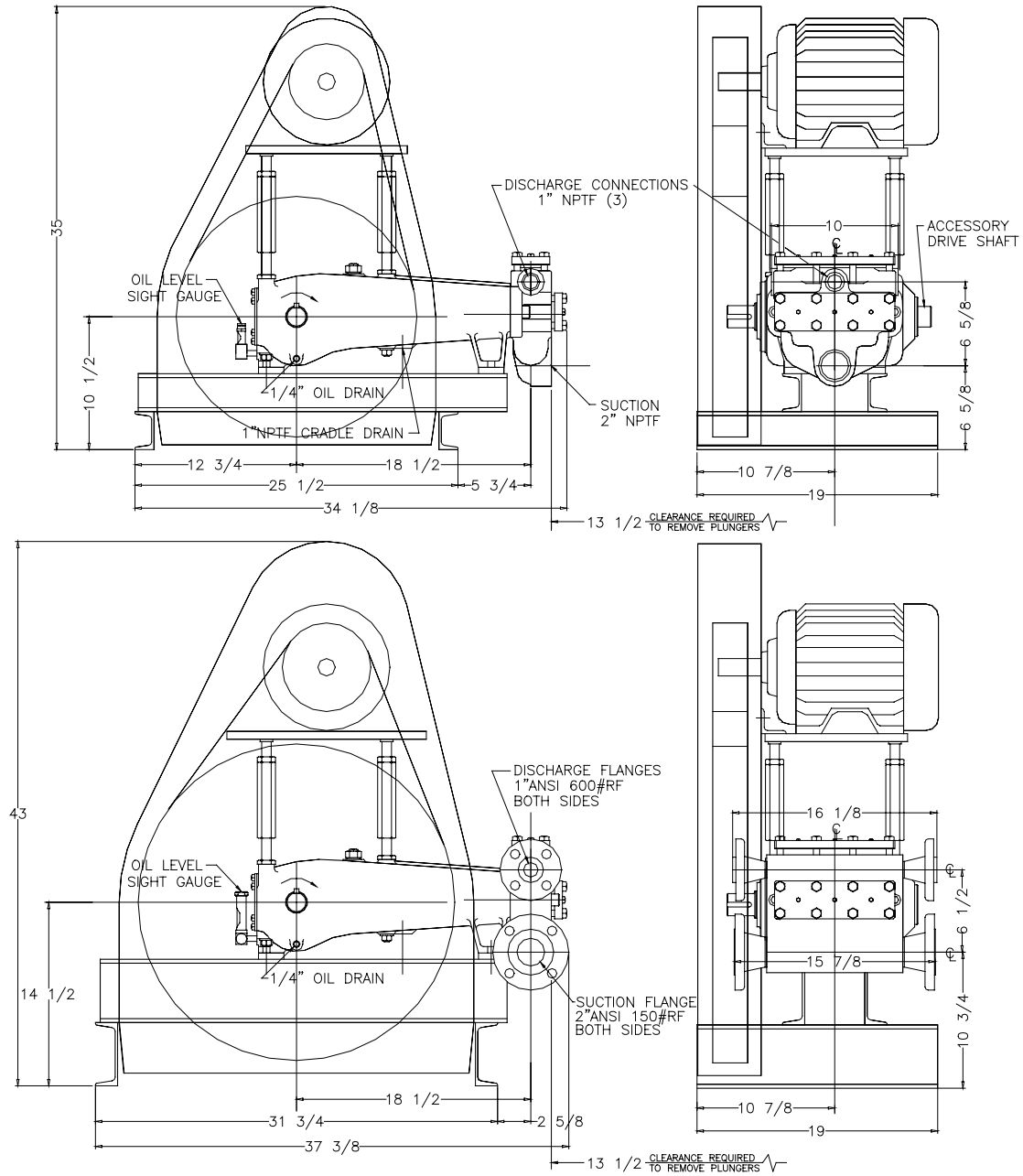
POWER END ENGINEERING DATA

Max. Input HP @ Speed	15 HP @ 650 rpm
Rated Continuous Plunger Load	1,828 lb.
Normal Continuous Speed Range	150 to 600 rpm
Minimum Speed	100 rpm
Oil Capacity	2 U.S. Qrts
Power End Oiling System	Splash & Scoop
Power Frame, One-Piece	Cast Iron
Crosshead, Full Cylindrical	Cast Iron
Crosshead, Dia. x Length	2 5/8 x 2 7/8 in.
Crankshaft	Ductile Iron
Crankshaft Diameters:	
At Tapered Roller Bearings	2.167 in.
At Crankpin Bearings	1.750 x 1.063 in.
Crosshead (Wrist) Pin, Case-Hardened and Ground	AISI 8620
Main Bearings, Tapered Roller	Timken®
Crankpin Bearings, Precision Automotive	Babbitt-Lined
Extension (Pony) Rod, Integral w/ Plungers	316 S.S.
Connecting Rod, Automotive Type	Ductile Iron
Average Crosshead Speed @ 600 rpm.....	150 fpm
Minimum Life Expectancy, Main Bearings, L ₁₀	60,000+ hr.

LIQUID END ENGINEERING DATA

Max. Continuous Working Pressure	3,040 psi
Hydrostatic Test	4,560 psi
Liquid End Materials, A.S.T.M.	
Nickel Aluminum Bronze	B148-C955
Carbon Steel Block	A516 Gr. 70 or A105
Stainless Steel Block	Various Grades
Ductile Iron	A536 80-55-06
Plunger Type "Rokide" (Chromium Oxide-Coated)	316 S.S.
Stuffing Boxes, Field-Removable and Replaceable	Stainless Steel
Packing Types Available	
Gland-loaded, Non-Adjustable	Style 838
Spring-loaded, Braided Teflon & Kevlar	Style 140
Spring-loaded, Cup-type	Style 120X
Spring-loaded, Garlock	Style 892IK
Valve Cover and Cyl. Head Plugs	316 S.S.
Retainer Plates, Steel, A.S.T.M.	A36
Seals, Stuffing Boxes, Valve Covers	Buna-N
Bolting, High Strength, Heat Treated	Alloy Steel
Valve Types Available	
Dual Stem Guided	17-4PH S.S.
Valve Spring Material	Inconel®
Valve Seat, Liquid Passage Area573 sq.in.
Avg. Liquid Velocity with 1 5/8" plungers @ 600 rpm	
thru Dual Stem Guided Valves.....	9.04 fps
thru Suction Manifold.....	2.32 fps
thru Discharge Manifold	10.7 fps

MA-15M Triplex Pump



740 EAST 9TH STREET,
ASHLAND, OHIO 44805
WWW.MYERSAPLEX.COM

269 TRILLIUM DRIVE, KITCHENER,
ONTARIO, CANADA N2G 4W5
WWW.MYERSAPLEX.COM

Inconel® is a registered trademark of the Special Metals family of companies
Timken® is a registered trademark of The Timken Company
Myers® is a registered trademark of Pentair Ltd.

Because we are continuously improving our products and services, Pentair reserves the right to change specifications without prior notice.
MA1001 03/07/13 © 2013 Pentair Ltd. All Rights Reserved.

www.powerzone.com