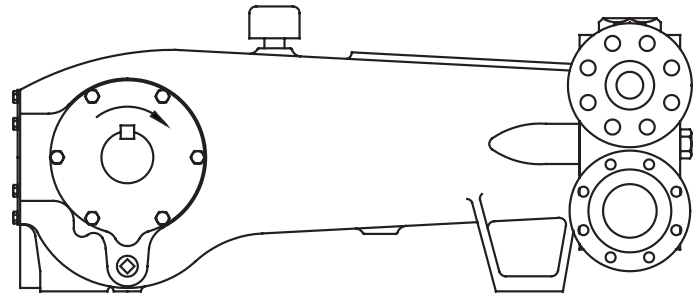




MYERS® APLEX SERIES

MA-240H-HD QUINTUPLEX PLUNGER PUMP



No. of plungers.....	5
Maximum rated speed.....	450 rpm
Stroke length.....	4.25 in. 108 mm
Maximum rated power.....	275.0 HP 205.0 KW
Maximum rod load	10,300 lb. 45.7 kN
Weight.....	3640 lbs.

ENGLISH UNITS								
PLUNGER SIZE IN.	STUFFING BOX BORE IN.	MAX PSI	*GALLON PER./REV	200 RPM USGPM	300 RPM USGPM	400 RPM USGPM	500 RPM USGPM	600 RPM USGPM
1.875	2.875	4300	0.2540	63.5	76.2	88.9	101.6	114.3
1.750	2.875	5000	0.2213	55.3	66.4	77.5	88.5	99.6
1.625	2.500	5700	0.1908	47.7	57.2	66.8	76.3	85.9
1.500	2.500	6700	0.1626	40.7	48.8	56.9	65.0	73.2
<i>HP REQUIRED @ RPM**</i>				153.2	184.1	214.5	245.5	275.0

METRIC UNITS								
PLUNGER SIZE M.M	STUFFING BOX BORE MM.	MAX PRESS. BAR	*LITER PER./REV	200 RPM LPM	300 RPM LPM	400 RPM LPM	500 RPM LPM	600 RPM LPM
47.6	73.0	295.0	0.9616	240.4	288.5	336.6	384.6	432.7
44.5	73.0	339.1	0.8378	209.5	251.3	293.2	335.1	377.0
41.3	63.5	393.2	0.7224	180.6	216.7	252.8	289.0	325.1
38.1	63.5	461.1	0.6156	153.9	184.7	215.5	246.2	277.0
<i>KW REQUIRED @ RPM**</i>				114.0	137.1	159.8	182.8	205.0

*Displacement based on 100% Volumetric Efficiency

**Power based on 90% Mechanical Efficiency

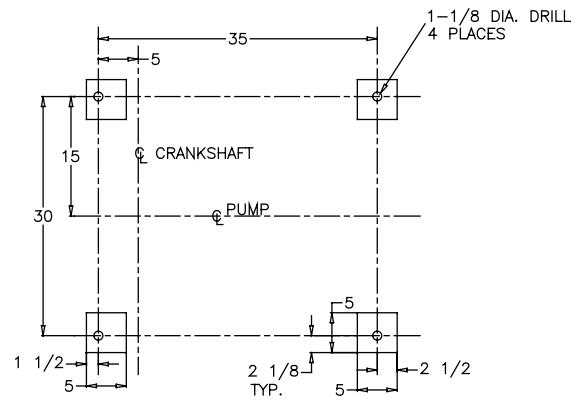
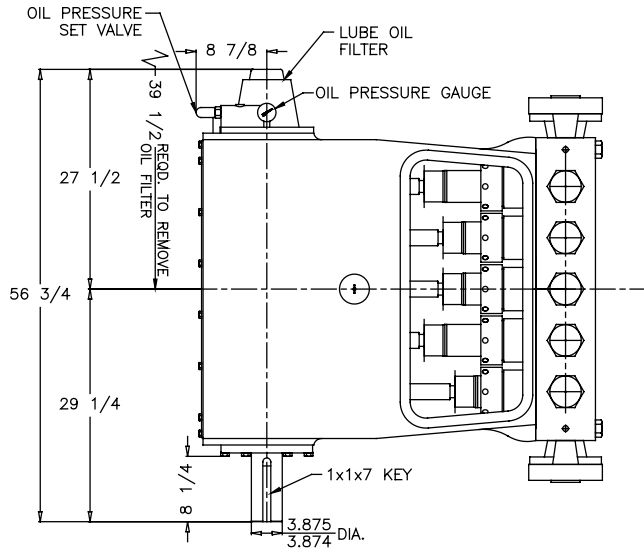
$$IHP = \frac{USGPM \times (\text{Discharge psig} - 1/2 \text{ Suction psig})}{1542}$$

$$IKW = \frac{M^3/HR \times (\text{Discharge Bar} - 1/2 \text{ Suction Bar})}{17.99}$$

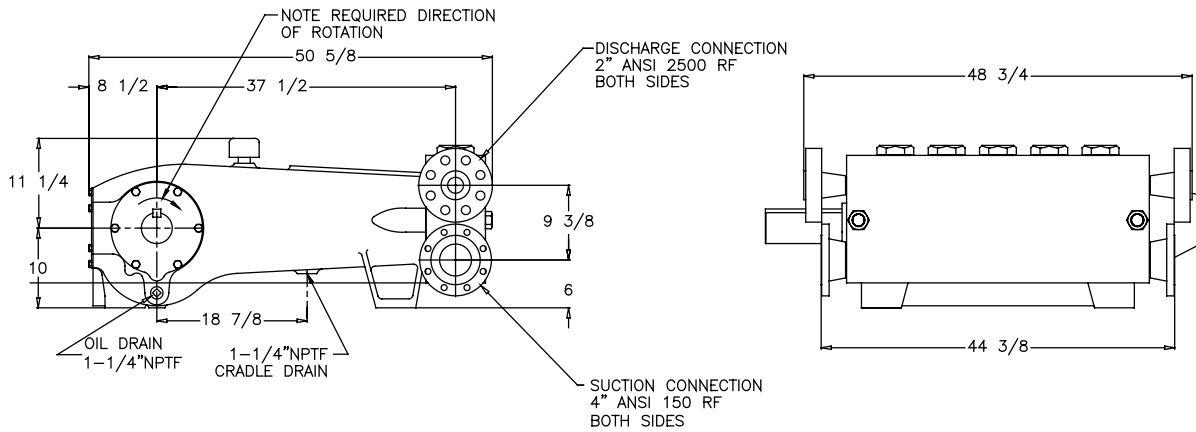
$$PUMP \text{ RPM} = \frac{USGPM \text{ Desired}}{USGPM \text{ per Revolution of Selected Plunger}}$$

$$PUMP \text{ RPM} = \frac{M^3/HR \text{ Desired}}{M^3 \text{ per Revolution of Selected Plunger}}$$

MA-240H-HD Quintuplex Pump



FOUNDATION PLAN



ENGINEERING DATA

MA-240H-HD Quintuplex Pump

POWER END ENGINEERING DATA

Max. Input HP @ Speed	275 @ 450 RPM
Rated Continuous Plunger Load	10,300 lb.
Max. Rated Continuous Speed	450 RPM
Normal Continuous Speed Range.....	150 to 420 RPM
Minimum Speed.....	100 RPM
Oil Capacity	64 U.S. Qrts
Power End Oiling System	Pressure Lubrication System
Power Frame, One-Piece	Cast Iron
Crosshead, Full Cylindrical	Cast Iron
Crosshead, Dia. x Length	5 3/4 x 6 3/16 inches
Crankshaft	Forged , Heat Treated and Nitrided 4145
Crankshaft Diameters:	
At Drive Extension.....	3.875/3.874 inches
At Tapered Roller Bearings	4 in.
At Center Bearings.....	9 3/8 inches
At Crankpin Bearings, Dia. x Length	4 x 3 inches
Crosshead (Wrist) Pin, Case-Hardened and Ground	AISI 8620
Main Bearings, Tapered Roller	Timken®
Crankpin Bearings, Precision Automotive.....	Steel Backed, Babbitt-Lined
Extension (Pony) Rod, Integral w/ Plungers	316 S.S.
Connecting Rod, Automotive Type	Ductile Iron
Average Crosshead Speed @ 450 rpm	300 fpm
Minimum Life Expectancy, Main Bearings, L ₁₀	65,000+ hr.

LIQUID END ENGINEERING DATA

Max. Continuous Working Pressure	5,000 psi
Hydrostatic Test	
Discharge	7,500 psi
Suction	425 psi
Available Liquid End Materials, A.S.T.M.	
Stainless Steel Block	2205 Duplex S.S.T.
Forged Steel	A105
Plunger Type "Rokide" (Chromium Oxide-Coated)	410 S.S.
Stuffing Boxes, Field-Removable and Replaceable	
Stainless Steel	17-4 PH SST
Carbon Steel.....	1020
Packing Types Available	
Spring-loaded, Braided Teflon & Kevlar	Style 140
Spring-loaded, cup-type	Style 120X
Valve Cover and Cyl. Head Plugs	316 S.S.
Retainer Plates, Ductile Iron, A.S.T.M.	A536 80-55-06
Seals, Stuffing Boxes, Valve Covers, Cyl. Heads	Buna-N
Disc Valve Types.....	17-4PH S.S.T.
Valve Spring material	Inconel®
Valve Seat, Liquid Passage Areas	2.3 sq.in.
Avg. Liquid Velocity with 1 7/8" plungers @ 450 rpm	
thru Valves.....	6.4 fps
thru Suction Manifold	2.9 fps
thru Discharge Manifold	11.9 fps

All drawings and specifications subject to change without notice.



740 EAST 9TH STREET,
ASHLAND, OHIO 44805
WWW.FEMYERS.COM

269 TRILLIUM DRIVE, KITCHENER,
ONTARIO, CANADA N2G 4W5
WWW.FEMYERS.COM

Inconel® is a registered trademark of the Special Metals family of companies
Timken® is a registered trademark of The Timken Company
Myers® is a registered trademark of Pentair Ltd.

Because we are continuously improving our products and services, Pentair reserves the right to change specifications without prior notice.
MA1033-HD 05/07/13 © 2013 Pentair Ltd. All Rights Reserved.

www.powerzone.com