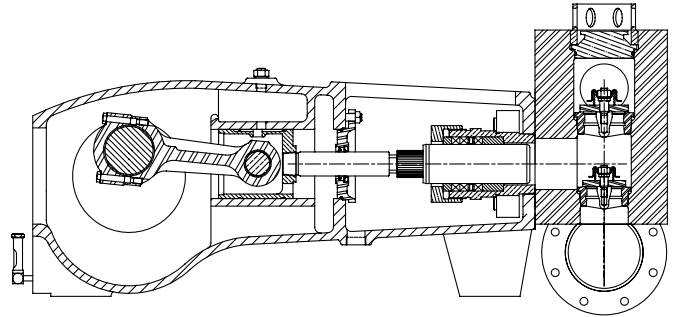


MYERS® APLEX SERIES

MA-240L

QUINTUPLEX PLUNGER PUMP



Number of Plungers	5
Maximum Rated Speed	450 RPM
Stroke Length.....	4.25 inches – 108.0 mm
Maximum Rated Power.....	240.0 HP – 178.8 kW
Maximum Rod Load	8,937 lbs. – 39.8 kN
Weight	3,240 lbs.

English Units

PLUNGER SIZE IN.	STUFFING BOX BORE IN.	MAX. PSI	*GALLON PER REV.	250 RPM US GPM	300 RPM US GPM	350 RPM US GPM	400 RPM US GPM	450 RPM US GPM
3.500	4.500	930	0.8851	221.3	265.5	309.8	354.0	398.3
3.375	4.500	1000	0.8230	205.7	246.9	288.0	329.2	370.3
3.250	4.500	1079	0.7631	190.8	228.9	267.1	305.3	343.4
3.125	4.000	1166	0.7056	176.4	211.7	246.9	282.2	317.5
3.000	4.000	1266	0.6502	162.6	195.1	227.6	260.1	292.6
2.875	4.000	1376	0.5972	149.3	179.2	209.0	238.9	268.7
2.750	4.000	1506	0.5464	136.6	163.9	191.2	218.6	245.9
2.625	4.000	1652	0.4978	124.5	149.4	174.2	199.1	224.0
2.500	3.250	1823	0.4516	112.9	135.5	158.0	180.6	203.2
2.375	3.250	2020	0.4075	101.9	122.3	142.6	163.0	183.4
HP REQUIRED @ RPM**				133.0	157.2	186.2	212.8	240.0

Metric Units

PLUNGER SIZE mm	STUFFING BOX BORE mm	MAX. PRESS. BAR	*LITERS PER REV.	250 RPM LPM	300 RPM LPM	350 RPM LPM	400 RPM LPM	450 RPM LPM
88.9	114.3	64.1	3.3510	837.8	1005.3	1172.9	1340.4	1508.0
85.7	114.3	68.9	3.1159	778.9	934.8	1090.6	1246.4	1402.2
82.6	114.3	74.4	2.8891	722.3	866.7	1011.2	1155.6	1300.1
79.4	101.6	80.4	2.6714	667.9	801.4	984.7	1068.6	1202.1
76.2	101.6	87.2	2.4617	615.4	738.5	861.6	984.7	1107.8
73.0	101.6	94.9	2.2610	565.3	678.3	791.4	904.4	1017.5
69.9	101.6	103.8	2.0687	517.2	620.6	724.0	827.5	930.9
66.7	101.6	113.9	1.8847	471.2	565.4	659.6	753.9	848.1
63.5	82.6	125.6	1.7098	427.5	512.9	598.4	683.9	769.4
60.3	82.6	139.2	1.5428	385.7	462.8	540.0	617.1	694.3
kW REQUIRED @ RPM**				99.0	117.0	138.7	158.5	178.8

*Displacement based on 100% Volumetric Efficiency

**Power based on 90% Mechanical Efficiency

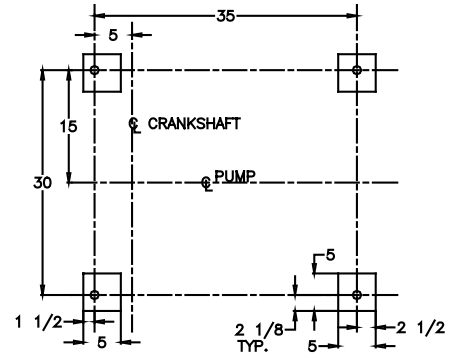
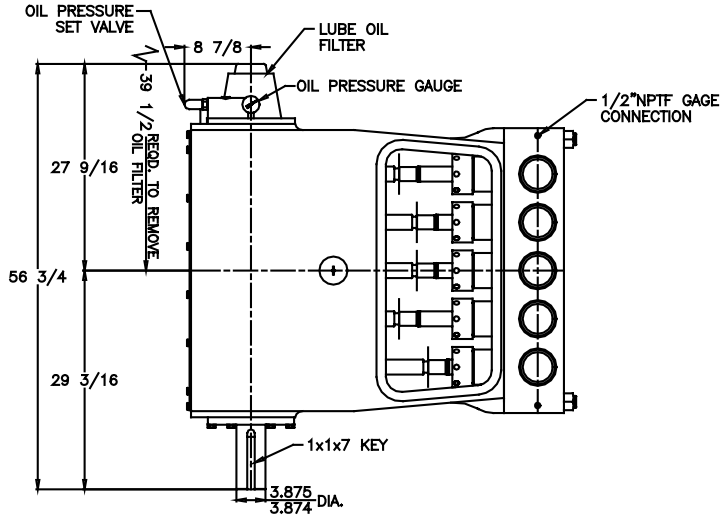
$$1 \text{ HP} = \frac{\text{US GPM} \times (\text{Discharge psig} - 1/2 \text{ Suction psig})}{1542}$$

$$1 \text{ kW} = \frac{\text{M}^3/\text{HR} \times (\text{Discharge Bar} - 1/2 \text{ Suction Bar})}{17.99}$$

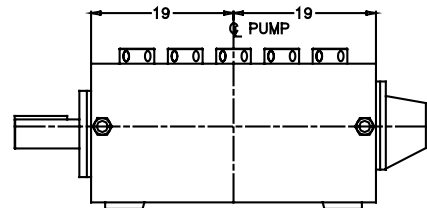
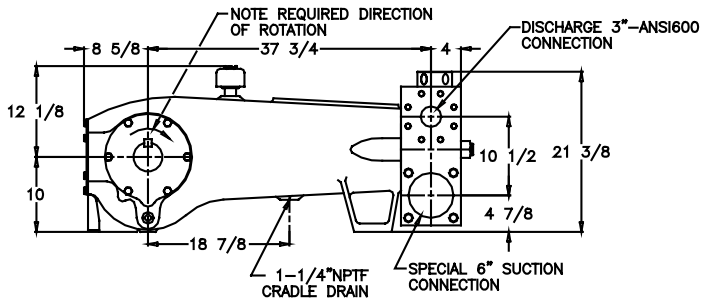
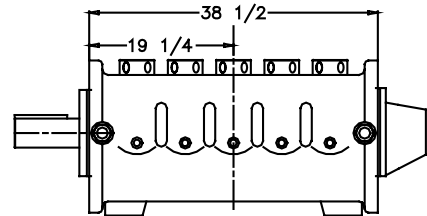
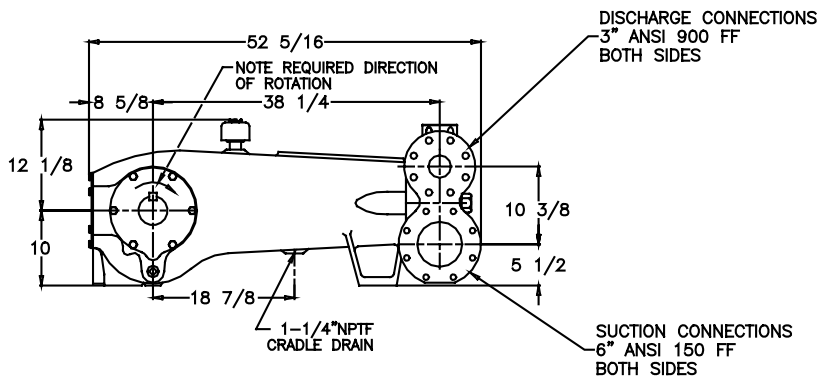
$$\text{PUMP RPM} = \frac{\text{US GPM Desired}}{\text{US GPM per Revolution of Selected Plunger}}$$

$$\text{PUMP RPM} = \frac{\text{M}^3/\text{HR Desired}}{\text{M}^3 \text{ per Revolution of Selected Plunger}}$$

MA-240L Quintuplex Pump



FOUNDATION PLAN



All drawings and specifications subject to change without notice.

Engineering Data

MA-240L Quintuplex Pump

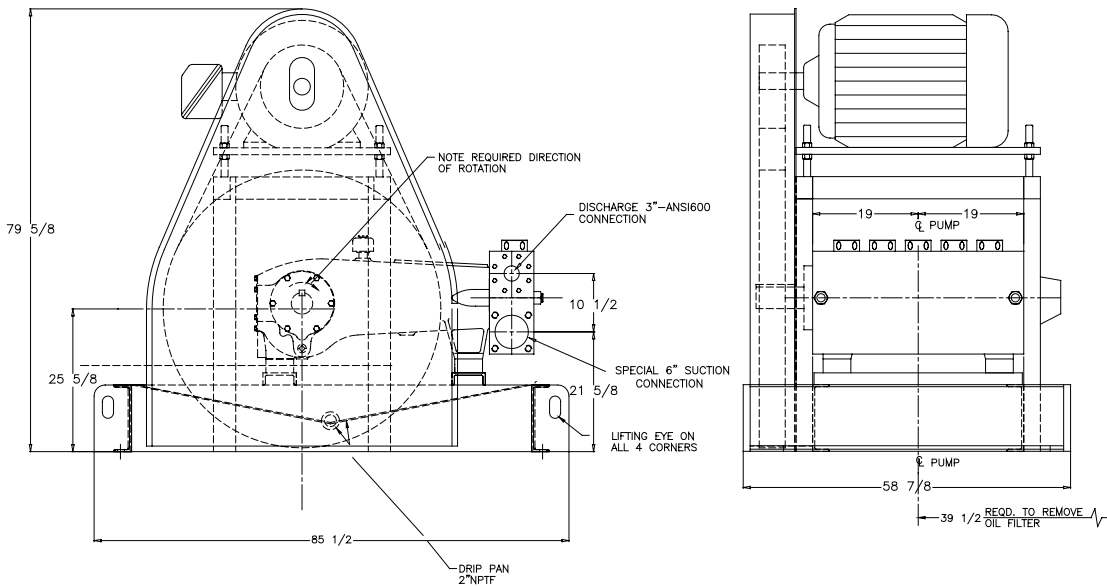
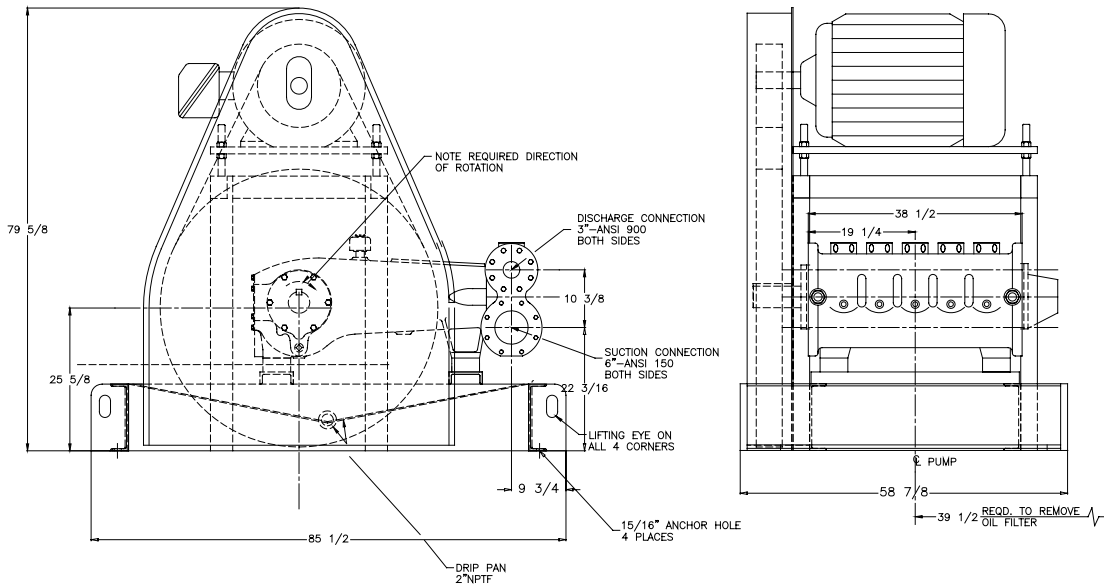
Power End Engineering Data

Maximum Input HP @ Speed	240 HP @ 450 RPM
Rated Continuous Plunger Load	8,937 lbs.
Maximum Rated Continuous Speed	450 RPM
Normal Continuous Speed Range	150 to 420 RPM
Minimum Speed	100 RPM
Oil Capacity	54 U.S. Quarts
Power End Oiling System.....	Pressure Lubrication System
Power Frame, One-Piece.....	Cast Iron
Crosshead, Full Cylindrical.....	Cast Iron
Crosshead, Diameter x Length.....	5-3/4 x 6-3/16 inches
Crankshaft	Ductile Iron
Crankshaft Diameters:	
At Tapered Roller Bearings	4 inches
At Crankpin Bearings, Diameter x Length.....	4 x 3 inches
Crosshead (Wrist) Pin, Case-Hardened and Ground.....	AISI 8620
Main Bearings, Tapered Roller	Timken®
Crankpin Bearings, Precision Automotive	Steel Backed, Babbitt-Lined
Extension (Pony) Rod, Integral with Plungers.....	316 SS
Connecting Rod, Automotive Type.....	Ductile Iron
Average Crosshead Speed @ 450 RPM.....	300 fpm
Minimum Life Expectancy, Main Bearings, L ₁₀	75,000+ hrs.

Liquid End Engineering Data

Maximum Continuous Working Pressure	2,020 psi
Hydrostatic Test	3,030 psi
Available Liquid End Materials, ASTM:	
Nickel Aluminum Bronze Casting	B148-C955
Carbon Steel Block.....	A105
Stainless Steel Block.....	Various Grades
Ductile Iron Casting	A536 80-55-06
Plunger Type Rokide® (Chromium Oxide-Coated).....	316 SS
Stuffing Boxes, Field-Removable and Replaceable	Nickel Aluminum Bronze
Packing Types Available:	
Gland-Loaded, Non-Adjustable.....	Style 838
Spring-Loaded, Braided Teflon® & Kevlar®	Style 140
Spring-Loaded, Cup-Type.....	Style 120X
Spring-Loaded, Garlock	Style 8921K
Valve Cover and Cylinder Head Plugs.....	316 SS
Retainer Plates, Ductile Iron, ASTM.....	A536 80-55-06
Seals, Stuffing Boxes, Valve Covers, Cylinder Heads.....	Buna-N
Disc Valve Types:	
Regularly Furnished, Acetal Resin	Delrin®
Optional, Hardened and Lapped.....	17-4 PH SS
Valve Spring Material.....	Inconel®
Valve Seat, Liquid Passage Area.....	6.26 square inches
Average Liquid Velocity with 3½" Plungers @ 450 RPM:	
Through Valves	7.68 fps
Through Suction Manifold	4.42 fps
Through Discharge Manifold	18.1 fps

MA-240L Quintuplex Pump



740 EAST 9TH STREET,
ASHLAND, OHIO 44805
WWW.FEMYERS.COM

490 PINEBUSH ROAD, UNIT 4,
CAMBRIDGE, ONTARIO N1T 0A5
WWW.FEMYERS.COM

Delrin®, Teflon® and Kevlar® are registered trademarks of E. I. du Pont de Nemours and Company.

Inconel® is a registered trademark of the Special Metals family of companies.

Timken® is a registered trademark of The Timken Company. Rokide® is a registered trademark of Saint-Gobain Abrasives, Inc.

Myers® is a registered trademark of Pentair.

Because we are continuously improving our products and services, Pentair reserves the right to change specifications without prior notice.

MA1027 01/15/14 © 2014 Pentair Ltd. All Rights Reserved.

www.powerzone.com