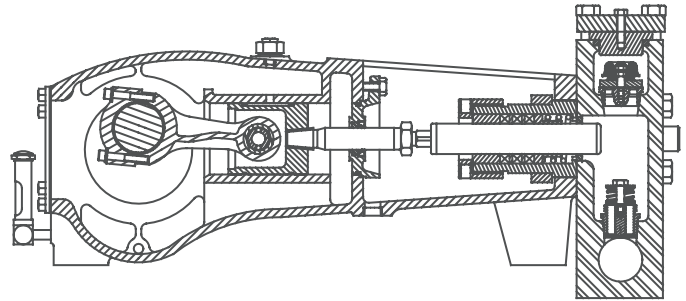




MYERS® APLEX SERIES

MA-25H

TRIPLEX PLUNGER PUMP



| | |
|--------------------------|-----------------------|
| No. of plungers..... | 3 |
| Maximum rated speed..... | 600 rpm |
| Stroke length..... | 2.00 in. 50.8 mm |
| Maximum rated power..... | 25.0 HP 18.6 KW |
| Maximum rod load | 2475 lb. 11.0 kN |
| Weight | 455 lbs. |

| ENGLISH UNITS | | | | | | | | |
|----------------------------|-----------------------|---------|------------------|---------------|---------------|---------------|---------------|---------------|
| PLUNGER SIZE IN. | STUFFING BOX BORE IN. | MAX PSI | *GALLON PER./REV | 200 RPM USGPM | 300 RPM USGPM | 400 RPM USGPM | 500 RPM USGPM | 600 RPM USGPM |
| .875 | 1.500 | 4145 | .0156 | 3.1 | 4.7 | 6.2 | 7.8 | 9.4 |
| .750 | 1.500 | 5000 | .0115 | 2.3 | 3.5 | 4.6 | 5.8 | 6.9 |
| <i>HP REQUIRED @ RPM**</i> | | | | 8.3 | 12.7 | 16.6 | 20.9 | 25.0 |

| METRIC UNITS | | | | | | | | |
|----------------------------|-----------------------|----------------|-----------------|-------------|-------------|-------------|-------------|-------------|
| PLUNGER SIZE M.M | STUFFING BOX BORE MM. | MAX PRESS. BAR | *LITER PER./REV | 200 RPM LPM | 300 RPM LPM | 400 RPM LPM | 500 RPM LPM | 600 RPM LPM |
| 22.2 | 38.1 | 283.7 | 0.0591 | 11.8 | 17.7 | 23.6 | 39.6 | 35.5 |
| 19.1 | 38.1 | 344.7 | 0.0435 | 8.7 | 13.1 | 17.4 | 21.8 | 26.1 |
| <i>KW REQUIRED @ RPM**</i> | | | | 6.3 | 9.4 | 12.5 | 15.5 | 18.6 |

**Displacement based on 100% Volumetric Efficiency*

***Power based on 90% Mechanical Efficiency*

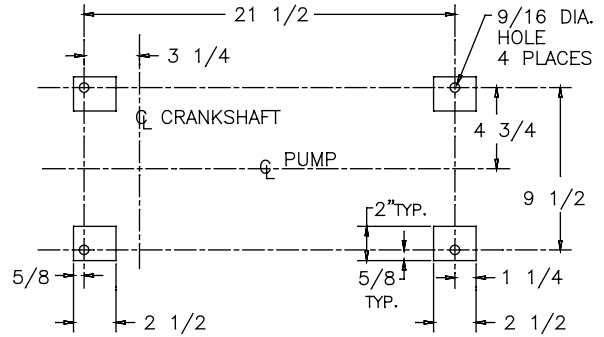
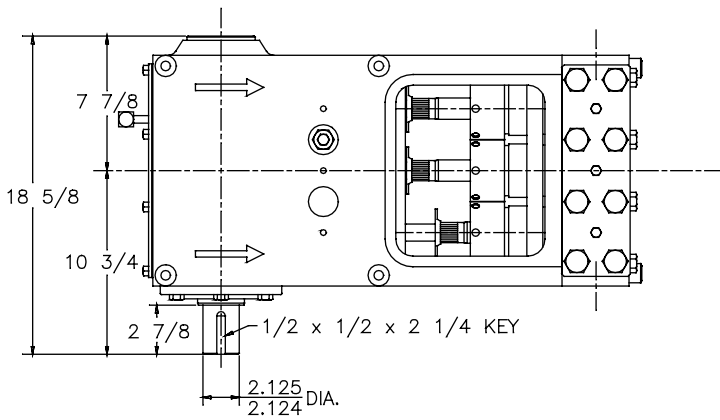
$$IHP = \frac{USGPM \times (\text{Discharge psig} - 1/2 \text{ Suction psig})}{1542}$$

$$IKW = \frac{M^3/HR \times (\text{Discharge Bar} - 1/2 \text{ Suction Bar})}{17.99}$$

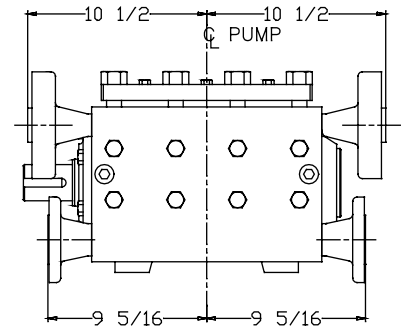
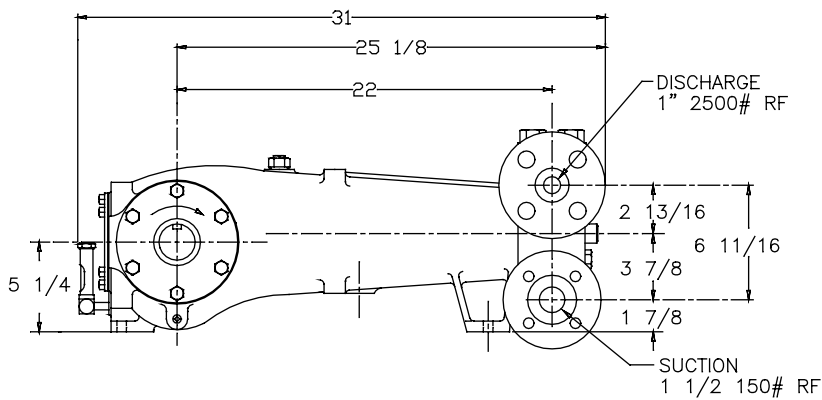
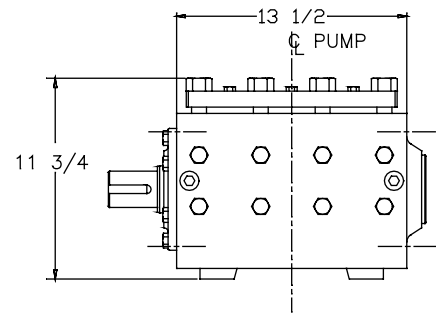
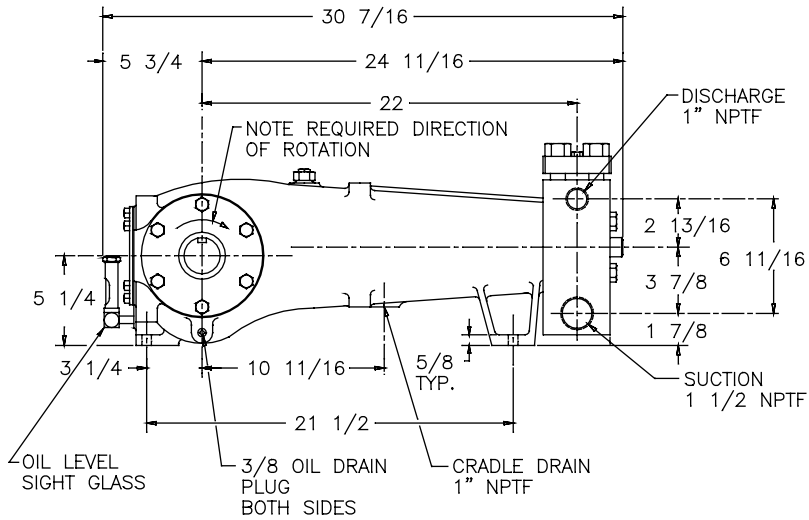
$$PUMP \text{ RPM} = \frac{USGPM \text{ Desired}}{USGPM \text{ per Revolution of Selected Plunger}}$$

$$PUMP \text{ RPM} = \frac{M^3/HR \text{ Desired}}{M^3 \text{ per Revolution of Selected Plunger}}$$

MA-25H Triplex Pump



FOUNDATION PLAN



ENGINEERING DATA

MA-25H Triplex Pump

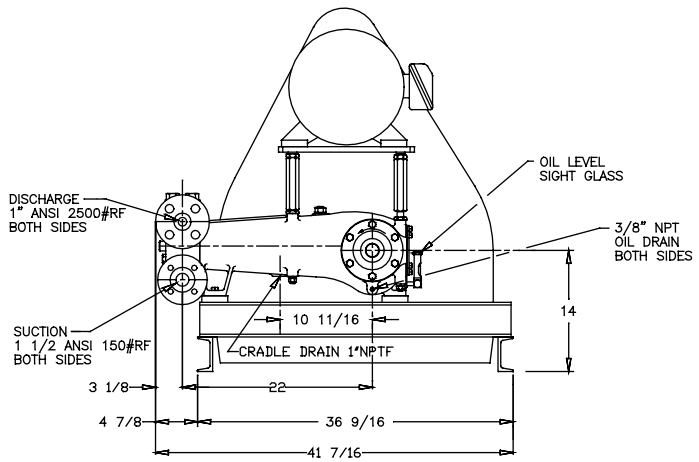
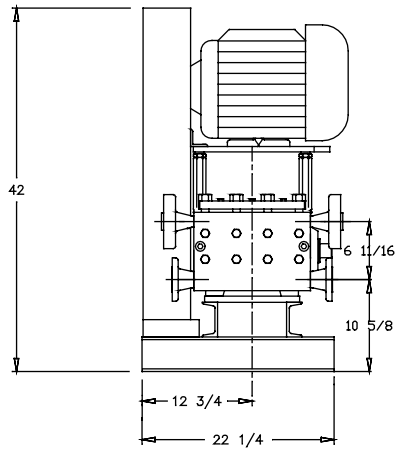
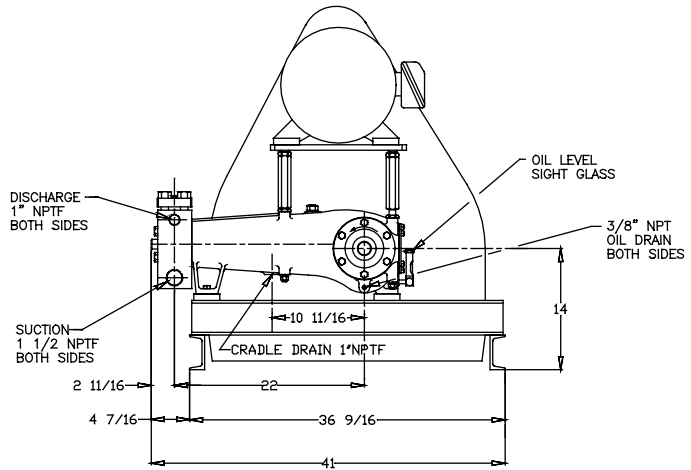
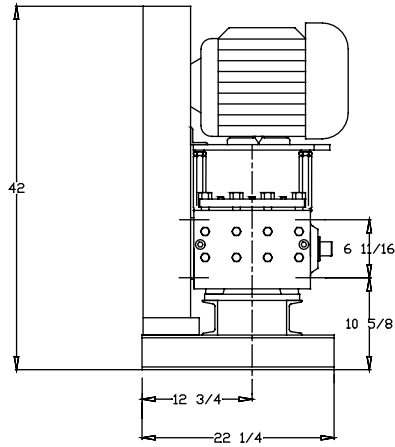
POWER END ENGINEERING DATA

| | |
|---|-------------------|
| Max. Input HP @ Speed | 25 HP @ 600 rpm |
| Rated Continuous Plunger Load | 2,475 lb. |
| Normal Continuous Speed Range | 150 to 575 rpm |
| Minimum Speed..... | 100 rpm |
| Oil Capacity | 5 U.S. Qrts |
| Power End Oiling System | Splash & Scoop |
| Power Frame, One-Piece | Cast Iron |
| Crosshead, Full Cylindrical | Cast Iron |
| Crosshead, Dia. x Length | 3 1/4 x 3 5/8 in. |
| Crankshaft | Ductile Iron |
| Crankshaft Diameters: | |
| At Tapered Roller Bearings | 3.15 in. |
| At Crankpin Bearings | 2.25 in. |
| Crosshead (Wrist) Pin, Case-Hardened and Ground | AISI 8620 |
| Main Bearings, Tapered Roller | Timken® |
| Crankpin Bearings, Precision Automotive | Babbitt-Lined |
| Extension (Pony) Rod, Integral w/ Plungers | 316 S.S. |
| Connecting Rod, Automotive Type | Ductile Iron |
| Average Crosshead Speed @ 600 rpm..... | 150 fpm |
| Minimum Life Expectancy, Main Bearings, L ₁₀ | 50,000+ hr. |

LIQUID END ENGINEERING DATA

| | |
|---|-------------|
| Max. Continuous Working Pressure | 5,000 psi |
| Hydrostatic Test | 7,500 psi |
| Liquid End Materials, A.S.T.M. | |
| Stainless Steel Block | 15.5PH |
| Carbon Steel Block | 4140 |
| Plunger Type "Rokide" (Chromium Oxide-Coated) | 316 S.S. |
| Stuffing Boxes, Field-Removable and Replaceable | |
| Stainless Steel, Hardened | 17-4PH |
| Carbon Steel..... | 1020 |
| Packing Types Available | |
| Spring-loaded, Braided Teflon & Kevlar | Style 140 |
| Spring-loaded, Cup-type | Style 120X |
| Retainer Plates, Steel, A.S.T.M. | A36 |
| Seals, Stuffing Boxes, Valve Covers | Buna-N |
| Bolting, High Strength, Heat Treated | Alloy Steel |
| Valve Types Available | |
| Standard, Disc Type, Hardened and Lapped | 17-4PH S.S. |
| Optional, Dual Stem Guided | 17-4PH S.S. |
| Valve Spring Material | Inconel® |
| Valve Seat, Liquid Passage Area | |
| Disc Valves | .57 sq.in. |
| Dual Stem Guided Valves | .59 sq.in. |
| Avg. Liquid Velocity with 7/8" plungers @ 600 rpm | |
| thru Disc Valves | 3.5 fps |
| thru Dual Stem Guided Valves..... | 3.4 fps |
| thru Suction Manifold | 1.3 fps |
| thru Discharge Manifold | 5.8 fps |

MA-25H Triplex Pump



740 EAST 9TH STREET,
ASHLAND, OHIO 44805
WWW.FEMYERS.COM

269 TRILLIUM DRIVE, KITCHENER,
ONTARIO, CANADA N2G 4W5
WWW.FEMYERS.COM

Inconel® is a registered trademark of the Special Metals family of companies
Timken® is a registered trademark of The Timken Company
Myers® is a registered trademark of Pentair Ltd.

Because we are continuously improving our products and services, Pentair reserves the right to change specifications without prior notice.
MA1002 05/07/13 © 2013 Pentair Ltd. All Rights Reserved.

www.powerzone.com