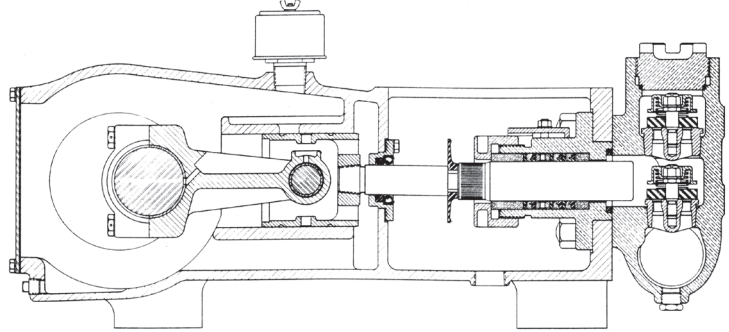


MYERS® APLEX SERIES

MA-60M

TRIPLEX PLUNGER PUMP



No. of plungers.....	3
Maximum rated speed.....	500 rpm
Stroke length.....	3.00 in. 76.2 mm
Maximum rated power.....	60.0 HP 44.7 KW
Maximum rod load	4752 lb. 21.09 kN
Weight.....	945 lbs.

ENGLISH UNITS

MA-60M

PLUNGER SIZE IN.	STUFFING BOX BORE IN.	MAX PSI	* GALLON PER/REV.	300 RPM US GPM	350 RPM US GPM	400 RPM US GPM	450 RPM US GPM	500 RPM US GPM
2.500	3.250	968	0.191	57.4	66.9	76.5	86.1	95.6
2.375	3.250	1073	0.173	51.8	60.4	69.0	77.7	86.3
2.250	3.250	1195	0.155	46.5	54.2	62.0	69.7	77.5
2.125	2.875	1340	0.138	41.5	48.4	55.3	62.2	69.1
2.000	2.875	1513	0.122	36.7	42.8	49.0	55.1	61.2
1.875	2.875	1721	0.108	32.3	37.7	43.0	48.4	53.8
1.750	2.875	1976	0.094	28.1	32.8	37.5	42.2	46.9
1.625	2.500	2291	0.081	24.2	28.3	32.3	36.4	40.4
1.500	2.500	2689	0.069	20.7	24.1	27.5	31.0	34.4
1.375	2.250	3200	0.058	17.4	20.2	23.1	26.0	28.9

HP REQUIRED @ RPM**

	36.0	42.0	48.0	54.0	60.0
--	------	------	------	------	------

METRIC UNITS

MA-60M

PLUNGER SIZE MM.	STUFFING BOX BORE MM.	MAX PRESS. BAR	* LITER PER/REV.	300 RPM LPM	350 RPM LPM	400 RPM LPM	450 RPM LPM	500 RPM LPM
63.5	82.6	66.7	0.724	217.2	253.4	289.6	325.8	362.0
60.3	82.6	74.0	0.653	196.0	228.7	261.4	294.0	326.7
57.2	82.6	82.4	0.586	175.9	205.2	234.6	263.9	293.2
54.0	73.0	92.4	0.523	156.9	183.1	209.2	235.4	261.6
50.8	73.0	104.3	0.463	139.0	162.2	185.3	208.5	231.7
47.6	73.0	118.7	0.407	122.2	142.6	162.9	183.3	203.7
44.5	73.0	136.2	0.355	106.4	124.1	141.9	159.6	177.3
41.3	63.5	158.0	0.306	91.8	107.1	122.4	137.7	152.9
38.1	63.5	185.4	0.261	78.2	91.3	104.3	117.4	130.4
34.9	57.2	220.6	0.219	65.8	76.7	87.7	98.6	109.6

KW REQUIRED @ RPM**

	26.8	31.3	35.8	40.3	44.7
--	------	------	------	------	------

*Displacement based on 100% Volumetric Efficiency

**Power based on 90% Mechanical Efficiency

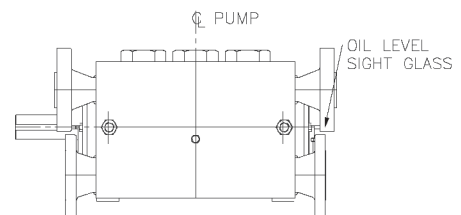
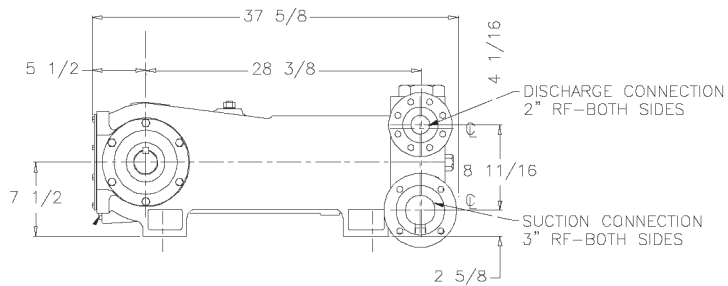
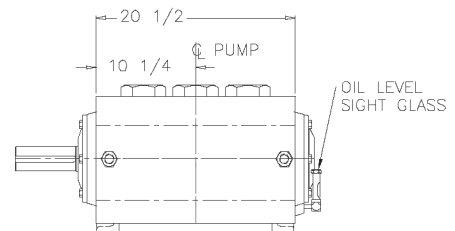
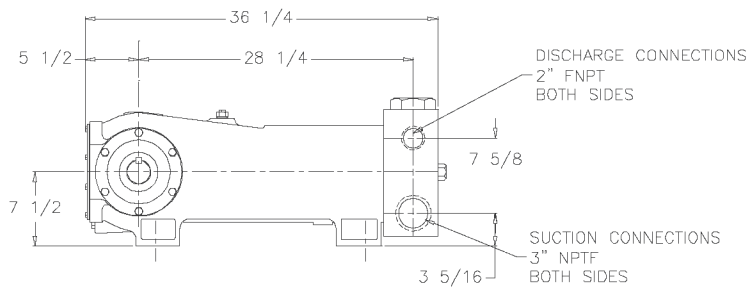
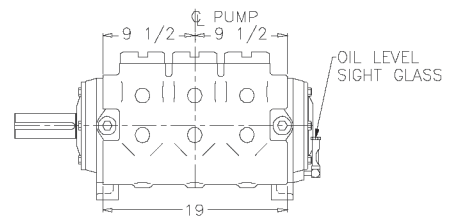
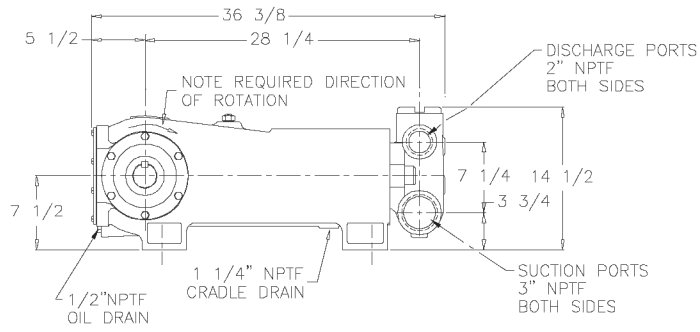
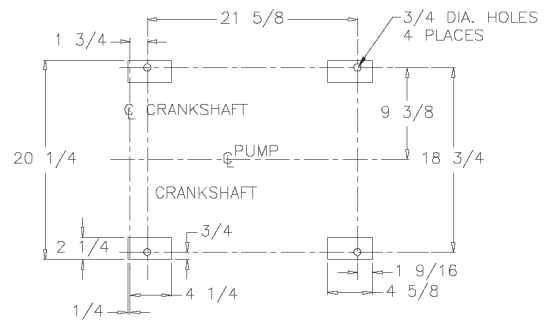
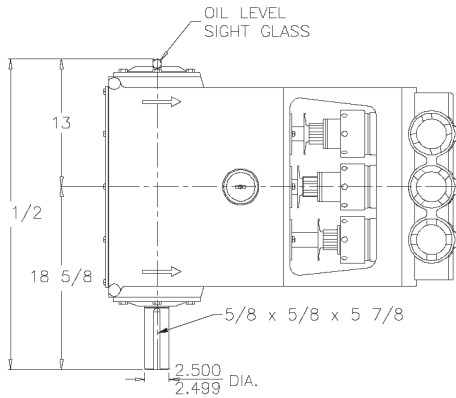
$$IHP = \frac{USGPM \times (\text{Discharge psig} - 1/2 \text{ Suction psig})}{1542}$$

$$IKW = \frac{M^3/HR \times (\text{Discharge Bar} - 1/2 \text{ Suction Bar})}{17.99}$$

$$PUMP \text{ RPM} = \frac{USGPM \text{ Desired}}{USGPM \text{ per Revolution of Selected Plunger}}$$

$$PUMP \text{ RPM} = \frac{M^3/HR \text{ Desired}}{M^3 \text{ per Revolution of Selected Plunger}}$$

MA-60M Triplex Pump



ENGINEERING DATA

MA-60M Triplex Pump

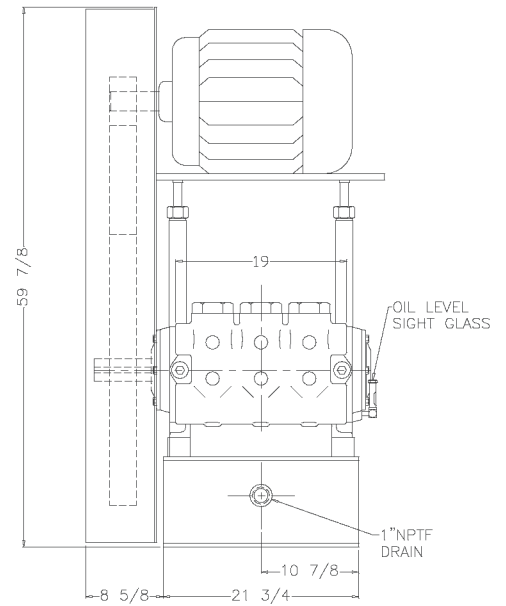
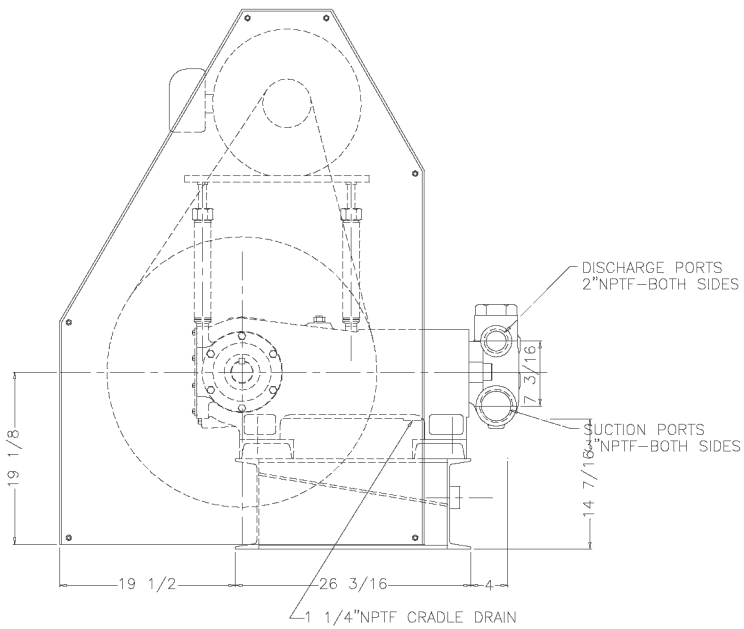
POWER END ENGINEERING DATA

Max. Input Power @ Speed	60 HP @ 500 rpm
Rated Continuous Plunger Load	4,752 lb.
Max. Rated Continuous Speed.....	550 rpm
Normal Continuous Speed Range	150 to 450 rpm
Minimum Speed	100 rpm
Oil Capacity	9 U.S. Qrts
Power End Oiling System	Splash
Power Frame, One-Piece	Class 30 Cast Iron
Crosshead, Full Cylindrical	Cast Iron
Crosshead, Dia. x Length	4 3/4 x 5 in.
Crankshaft	Ductile Iron
Crankshaft Diameters:	
At Tapered Roller Bearings	2 5/8 in.
At Crankpin Bearings, Dia. x Length	3 1/2 x 3 in.
Crosshead (Wrist) Pin, Case-Hardened and Ground	AISI 8620
Wrist Pin Bushing, SAE 660, dia. x width	1 5/16 x 2 in.
Main Bearings, Tapered Roller	Timken®
Center Bearings, Two Precision Steel Backed	Babbitt Lined
Crankpin Bearings, Precision Automotive.....	Steel Backed, Babbitt-Lined
Extension (Pony) Rod Integral w/ Plungers	316 S.S.
Connecting Rod, Automotive Type	Ductile Iron
Average Crosshead Speed @ 550 rpm	250 fpm
Minimum Life Expectancy, Main Bearings, L ₁₀	60,000+ hrs.

LIQUID END ENGINEERING DATA

Max. Continuous Working Pressure	3,200 psi
Hydrostatic Test	4,800 psi
Available Liquid End Materials, A.S.T.M.	
Nickel Aluminum Bronze Casting	B148-C955
Carbon Steel Block	A105
Stainless Steel Block	2205 Duplex or 316 S.S.
Ductile Iron Casting	A536 80-55-06
Plunger Type (Chromium Oxide-Coated)	316 S.S.
Stuffing Boxes, Field-Removable and Replaceable	316 S.S.
Gland, Stuffing Box	Nickel Aluminum Bronze
Packing Types Available:	
Spring-loaded, cup-type	Style 120X
Spring-loaded, Garlock	Style 892IK
Valve Cover and Cyl. Head Plugs	316 S.S.
Retainer Plates, Ductile Iron, A.S.T.M.	A536 80-55-06
Seals, Stuffing Boxes, Valve Covers, Cyl. Heads	Buna-N
Available Valve Types:	
Standard, Acetal Resin	Delrin®
Optional, Hardened and Lapped	17-4PH S.S.
Valve Spring Material	Inconel®
Valve Seat, Liquid Passage Area	2.3 sq.in.
Avg. Liquid Velocity with 2 1/4" plungers @ 550 rpm:	
thru Suction Manifold	4.1 fps
thru Discharge Manifold	10.4 fps

MA-60M Triplex Pump



740 EAST 9TH STREET,
ASHLAND, OHIO 44805
WWW.MYERSAPLEX.COM

269 TRILLIUM DRIVE, KITCHENER,
ONTARIO, CANADA N2G 4W5
WWW.MYERSAPLEX.COM

Delrin® is a registered trademark of E.L. duPont
Inconel® is a registered trademark of the Special Metals family of companies
Timken® is a registered trademark of The Timken Company
Myers® is a registered trademark of Pentair Ltd.

Because we are continuously improving our products and services, Pentair reserves the right to change specifications without prior notice.
MA1012 03/07/13 © 2013 Pentair Ltd. All Rights Reserved.

www.powerzone.com