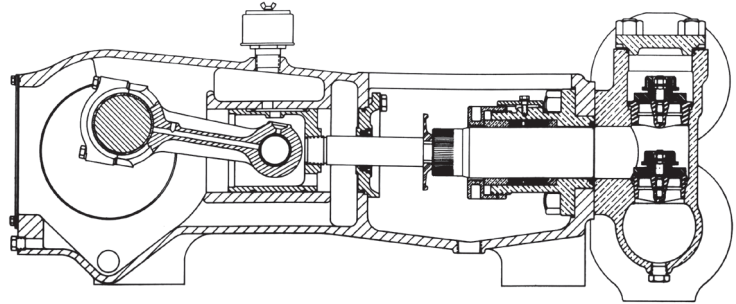




MYERS® APLEX SERIES

MA-95L

TRIPLEX PLUNGER PUMP



No. of plungers	3
Maximum rated speed	450 rpm
Stroke length.....	4.00 in. 101.6 mm
Maximum rated power.....	95.0 HP 70.7 KW
Maximum rod load	6259 lb. 27.7 kN
Weight	1725 lbs

ENGLISH UNITS								
PLUNGER SIZE IN.	STUFFING BOX BORE IN.	MAX PSI.	*GALLON PER./REV.	250 RPM USGPM	300 RPM USGPM	350 RPM USGPM	400 RPM USGPM	450 RPM USGPM
3.500	4.500	650	0.4998	125.0	149.9	174.9	199.9	224.9
3.250	4.500	754	0.4310	107.8	129.3	150.9	172.4	194.0
3.000	4.000	884	0.3672	91.8	110.2	128.5	146.9	165.2
2.750	4.000	1053	0.3086	77.2	92.6	108.0	123.4	138.9
2.625	4.000	1156	0.2811	70.3	84.3	98.4	112.4	126.5
2.500	3.250	1274	0.2550	63.8	76.5	89.3	102.0	114.8
2.375	3.250	1411	0.2301	57.5	69.0	80.5	92.0	103.6
2.250	3.250	1572	0.2066	51.7	62.0	72.3	82.6	93.0
2.125	3.250	1764	0.1842	46.1	55.3	64.5	73.7	82.9
HP REQUIRED @ RPM**				52.6	63.1	73.6	84.1	95.0

METRIC UNITS								
PLUNGER SIZE M.M	STUFFING BOX BORE MM.	MAX PRESS. BAR	*LITER PER./REV	250 RPM LPM	300 RPM LPM	350 RPM LPM	400 RPM LPM	450 RPM LPM
88.9	114.3	44.7	1.8922	473.1	567.7	662.3	756.9	851.5
82.6	114.3	51.9	1.6318	408.0	489.5	571.1	652.7	734.3
76.2	101.6	60.9	1.3902	347.6	417.1	486.6	556.1	625.6
69.9	101.6	72.6	1.1684	292.1	350.5	408.9	467.4	525.8
66.7	101.6	79.7	1.0642	266.1	319.3	372.5	425.7	478.9
63.5	82.6	88.2	0.9654	241.4	287.6	337.9	386.2	434.4
60.3	82.6	97.4	0.8712	217.8	261.4	304.9	348.5	392.0
57.2	82.6	108.4	0.7822	195.6	234.7	273.8	312.9	352.0
54.0	82.6	121.6	0.6974	174.4	209.2	244.1	279.0	313.8
KW REQUIRED @ RPM**				39.2	47.0	54.8	62.6	70.7

*Displacement based on 100% Volumetric Efficiency

**Power based on 90% Mechanical Efficiency

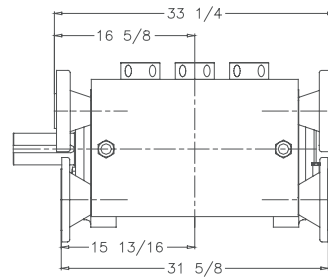
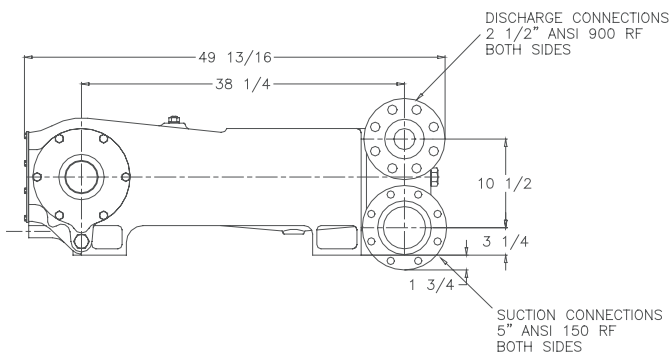
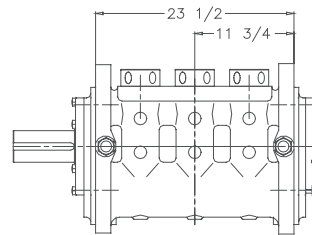
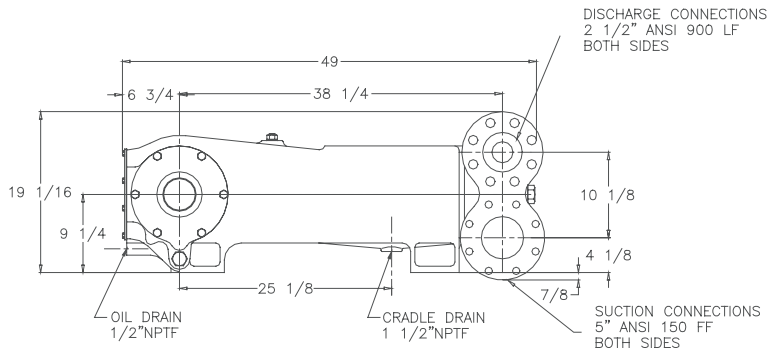
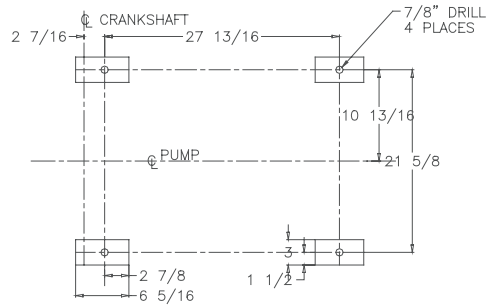
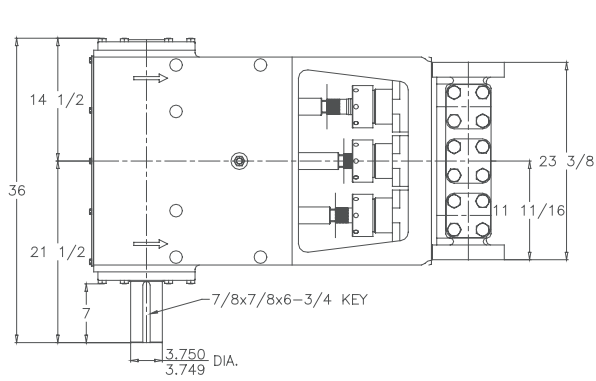
$$IHP = \frac{USGPM \times (\text{Discharge psig} - 1/2 \text{ Suction psig})}{1542}$$

$$IKW = \frac{M^3/HR \times (\text{Discharge Bar} - 1/2 \text{ Suction Bar})}{17.99}$$

$$PUMP \text{ RPM} = \frac{USGPM \text{ Desired}}{USGPM \text{ per Revolution of Selected Plunger}}$$

$$PUMP \text{ RPM} = \frac{M^3/HR \text{ Desired}}{M^3 \text{ per Revolution of Selected Plunger}}$$

MA-95L Triplex Pump



ENGINEERING DATA

MA-95L Triplex Pump

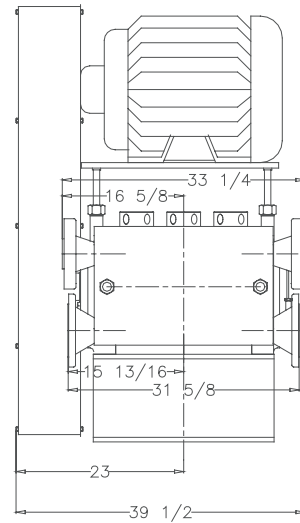
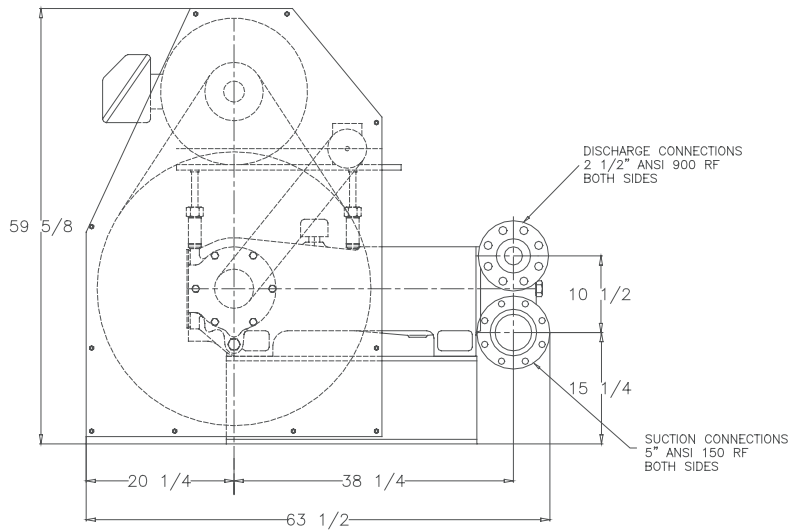
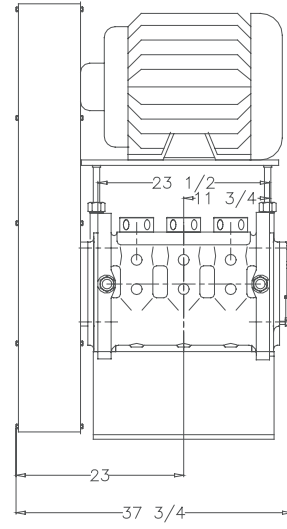
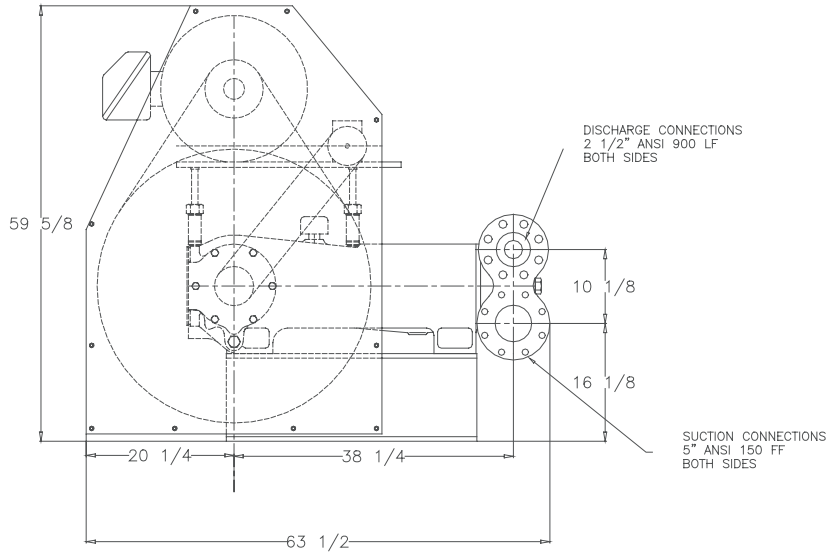
POWER END ENGINEERING DATA

Max. Input HP @ Speed	95 @ 450 RPM
Rated Continuous Plunger Load	6,259 lb.
Max. Rated Continuous Speed	450 RPM
Normal Continuous Speed Range	150 to 420 RPM
Minimum Speed	100 RPM
Oil Capacity	18 U.S. Qrts
Power End Oiling System	Splash & Scoop
Power Frame, One-Piece	Cast Iron
Crosshead, Full Cylindrical	Cast Iron
Crosshead, Dia. x Length	5 3/4 x 6 3/16 inches
Crankshaft	Ductile Iron
Crankshaft Diameters:	
At Tapered Roller Bearings	4 in.
At Crankpin Bearings, Dia. x Length	4 x 3 inches
Crosshead (Wrist) Pin, Case-Hardened and Ground	AISI 8620
Main Bearings, Tapered Roller	Timken®
Crankpin Bearings, Precision Automotive	Steel Backed, Babbitt-Lined
Extension (Pony) Rod, Integral w/ Plungers	316 S.S.
Connecting Rod, Automotive Type	Ductile Iron
Average Crosshead Speed @ 450 rpm	300 fpm
Minimum Life Expectancy, Main Bearings, L ₁₀	60,000+ hr.

LIQUID END ENGINEERING DATA

Max. Continuous Working Pressure	1,992 psi
Hydrostatic Test	2,988 psi
Available Liquid End Materials, A.S.T.M.	
Nickel Aluminum Bronze Casting.....	B148-C955
Carbon Steel Block	A105
Stainless Steel Block	Various Grades
Ductile Iron Casting	A536 80-55-06
Plunger Type Rokide® (Chromium Oxide-Coated)	316 S.S.
Stuffing Boxes, Field-Removable and Replaceable	Nickel Aluminum Bronze
Packing Types Available	
Gland-loaded, Non-Adjustable	Style 838
Spring-loaded, Braided Teflon® & Kevlar®	Style 140
Spring-loaded, cup-type	Style 120X
Spring-loaded, Garlock	Style 892IK
Valve Cover and Cyl. Head Plugs	316 S.S.
Retainer Plates, Ductile Iron, A.S.T.M.	A536 80-55-06
Seals, Stuffing Boxes, Valve Covers, Cyl. Heads	Buna-N
Disc Valve Types	
Regularly Furnished, acetal resin	Delrin®
Optional, Hardened and Lapped,	17-4 PH S.S.
Valve Spring material	Inconel®
Valve Seat, Liquid Passage Areas	6.26 sq.in.
Avg. Liquid Velocity with 3 1/2" plungers @ 450 rpm	
thru Valves.....	7.68 fps
thru Suction Manifold	3.60 fps
thru Discharge Manifold	17.02 fps

MA-95L Triplex Pump



740 EAST 9TH STREET,
ASHLAND, OHIO 44805
WWW.FEMYERS.COM

490 PINEBUSH ROAD, UNIT 4,
CAMBRIDGE, ONTARIO N1T 0A5
WWW.FEMYERS.COM

Delrin®, Teflon® and Kevlar® are registered trademarks of E. I. du Pont de Nemours and Company.
Inconel® is a registered trademark of the Special Metals family of companies.
Timken® is a registered trademark of The Timken Company. Rokide® is a registered trademark of Saint-Gobain Abrasives, Inc.
Myers® is a registered trademark of Pentair.

Because we are continuously improving our products and services, Pentair reserves the right to change specifications without prior notice.
MA1018 01/03/14 © 2014 Pentair. All Rights Reserved.

www.powerzone.com