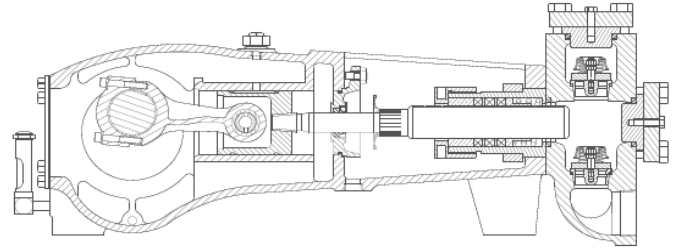


**POWER ZONE**  
Equipment, Inc.  
Official Distributor of Pentair Industrial Products



No. of plungers ..... 3  
 Maximum rated speed ..... 450 rpm  
 Stroke length.....4.00 in. 101.6 mm  
 Maximum rated power.....95.0 HP 70.7 KW  
 Maximum rod load .....6259 lb. 27.7 kN  
 Weight ..... 1600 lbs.

### ENGLISH UNITS

PLUNGER SIZE IN.	STUFFING BOX BORE IN.	MAX PSI.	* GALLON PER./REV.	250 RPM USGPM	300 RPM USGPM	350 RPM USGPM	400 RPM USGPM	450 RPM USGPM
2.250	3.250	1572	0.2066	51.7	62.0	72.3	82.6	92.9
2.125	3.250	1763	0.1842	46.0	55.3	64.5	73.7	82.9
2.000	2.875	1992	0.1632	40.8	49.0	57.1	65.3	73.4
1.875	2.875	2265	0.1434	35.9	43.0	50.2	57.4	65.5
1.750	2.875	2600	0.1250	31.3	37.5	43.8	50.0	56.3
1.625	2.500	3016	0.1077	26.9	32.3	37.7	43.1	48.5
1.500	2.500	3250	0.0918	23.0	27.5	32.1	36.7	41.3
<i>HP REQUIRED @ RPM**</i>				52.6	63.1	73.6	84.1	95.0

### METRIC UNITS

PLUNGER SIZE M.M	STUFFING BOX BORE MM.	MAX PRESS. BAR	* LITER PER./REV	250 RPM LPM	300 RPM LPM	350 RPM LPM	400 RPM LPM	450 RPM LPM
57.2	82.6	108.4	0.7822	195.6	234.7	273.8	315.9	352.0
54.0	82.6	121.6	0.6974	174.4	209.2	244.1	279.0	313.8
50.8	73.0	137.2	0.6179	154.5	185.4	216.3	247.2	278.1
47.6	73.0	156.1	0.5429	135.7	163.0	190.0	217.2	244.3
44.5	73.0	179.2	0.4733	118.3	142.0	165.7	189.3	213.0
41.3	63.5	207.9	0.4078	102.0	122.3	142.7	163.1	183.5
38.1	63.5	224.0	0.3476	86.9	103.8	121.7	139.0	156.4
<i>KW REQUIRED @ RPM**</i>				39.2	47.0	54.8	62.6	70.7

\*Displacement based on 100% Volumetric Efficiency

\*\*Power based on 90% Mechanical Efficiency

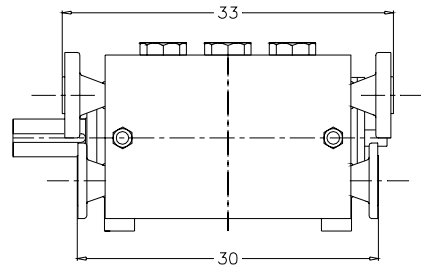
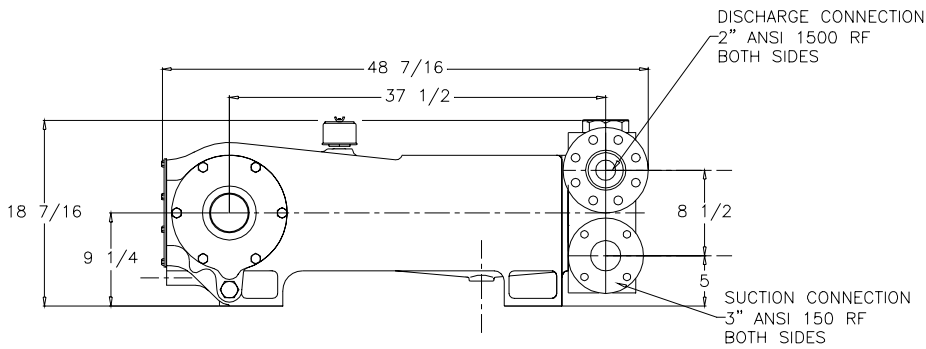
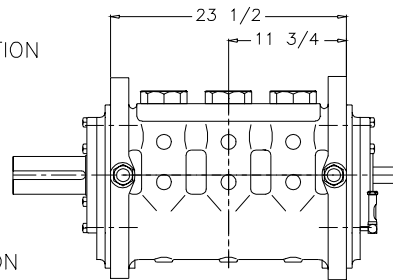
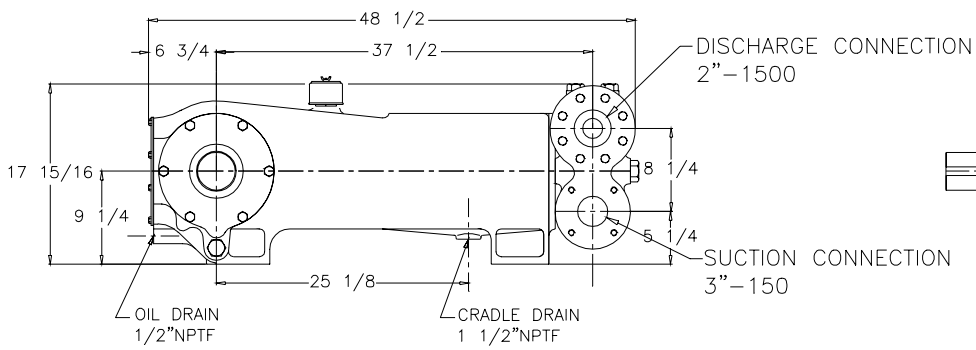
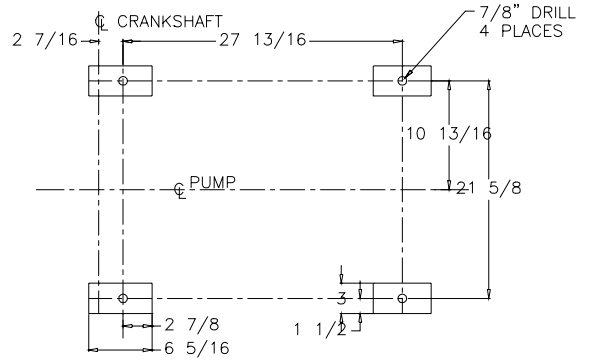
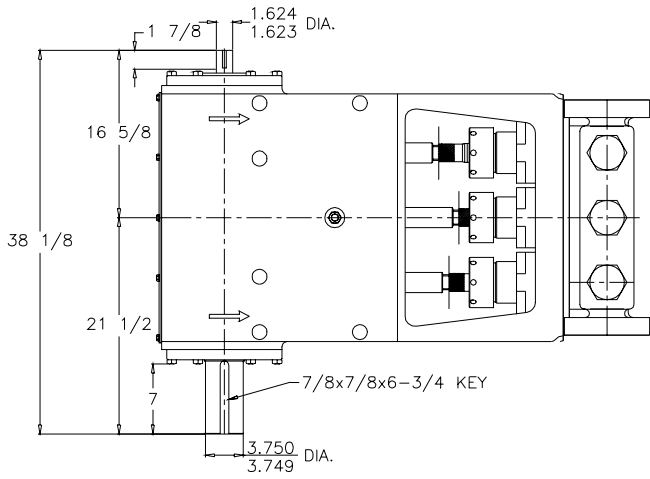
$$IHP = \frac{USGPM \times (\text{Discharge psig} - 1/2 \text{ Suction psig})}{1542}$$

$$IKW = \frac{M^3/HR \times (\text{Discharge Bar} - 1/2 \text{ Suction Bar})}{17.99}$$

$$PUMP \text{ RPM} = \frac{USGPM \text{ Desired}}{USGPM \text{ per Revolution of Selected Plunger}}$$

$$PUMP \text{ RPM} = \frac{M^3/HR \text{ Desired}}{M^3 \text{ per Revolution of Selected Plunger}}$$

# MA-95M Triplex Pump



# ENGINEERING DATA

## MA-95M Triplex Pump

### POWER END ENGINEERING DATA

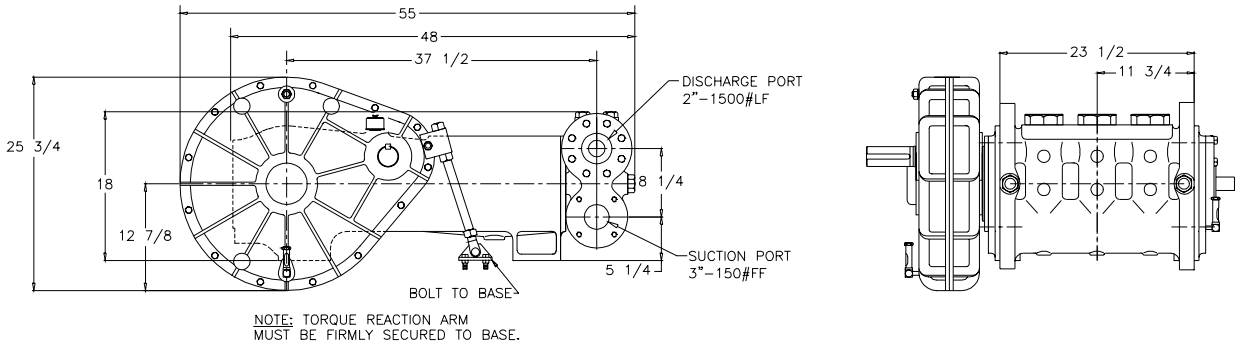
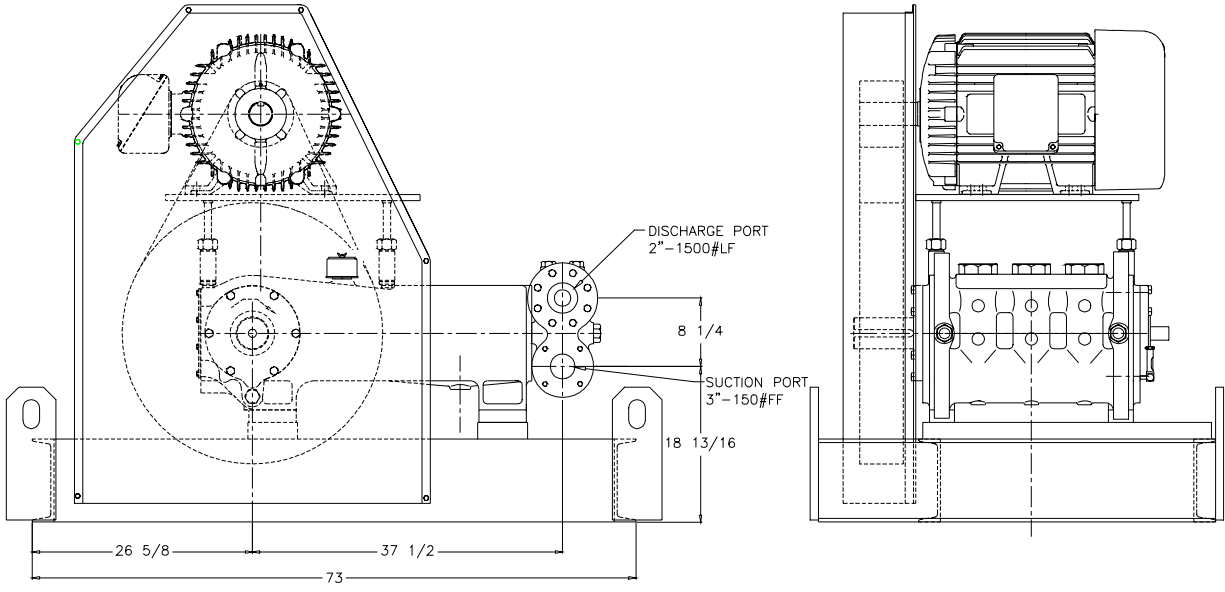
Max. Input HP @ Speed .....	95 @ 450 RPM
Rated Continuous Plunger Load .....	6,259 lb.
Max. Rated Continuous Speed .....	450 RPM
Normal Continuous Speed Range .....	150 to 420 RPM
Minimum Speed .....	100 RPM
Oil Capacity .....	18 U.S. Qrts
Power End Oiling System .....	Splash & Scoop
Power Frame, One-Piece .....	Cast Iron
Crosshead, Full Cylindrical .....	Cast Iron
Crosshead, Dia. x Length .....	5 3/4 x 6 3/16 inches
Crankshaft .....	Ductile Iron
Crankshaft Diameters:	
At Tapered Roller Bearings .....	4 in.
At Crankpin Bearings, Dia. x Length .....	4 x 3 inches
Crosshead (Wrist) Pin, Case-Hardened and Ground .....	AISI 8620
Main Bearings, Tapered Roller .....	Timken
Crankpin Bearings, Precision Automotive .....	Steel Backed, Babbitt-Lined
Extension (Pony) Rod, Integral w/ Plungers .....	316 S.S.
Connecting Rod, Automotive Type .....	Ductile Iron
Average Crosshead Speed @ 450 rpm .....	300 fpm
Minimum Life Expectancy, Main Bearings, L <sub>10</sub> .....	60,000+ hr.

### LIQUID END ENGINEERING DATA

Max. Continuous Working Pressure .....	3,250 psi
Hydrostatic Test .....	4,875 psi
Available Liquid End Materials, A.S.T.M.	
Stainless Steel Block .....	Various Grades
Nickel Aluminum Bronze Casting .....	B148-C955
Forged Steel Block .....	A105
Plunger Type "Rokide" (Chromium Oxide-Coated) .....	316 S.S.
Stuffing Boxes, Field-Removable and Replaceable	
Nickel Aluminum Bronze .....	B148-C954
Carbon Steel .....	1020
Packing Types Available	
Gland-loaded, Non-Adjustable .....	Style 838
Spring-loaded, Braided Teflon & Kevlar .....	Style 140
Spring-loaded, cup-type .....	Style 120X
Spring-loaded, Garlock .....	Style 892IK
Seals, Stuffing Boxes, Valve Covers, Cyl. Heads .....	Buna-N
Valve Types	
Standard, Disc Type .....	"Delrin"
Optional, Dual Stem Guided .....	17-4 PH S.S.
Valve Spring material .....	Inconel
Valve Seat, Liquid Passage Areas .....	2.35 sq.in.
Avg. Liquid Velocity with 2 1/4" plunger @ 450 rpm	
thru Valves .....	8.45 fps
thru Suction Manifold .....	4.21 fps
thru Discharge Manifold .....	9.49 fps

All drawings and specifications subject to change without notice.

# MA-95M Triplex Pump



**Myers** **APLEX**  
INDUSTRIAL PUMP DIVISION

[www.powerzone.com](http://www.powerzone.com)