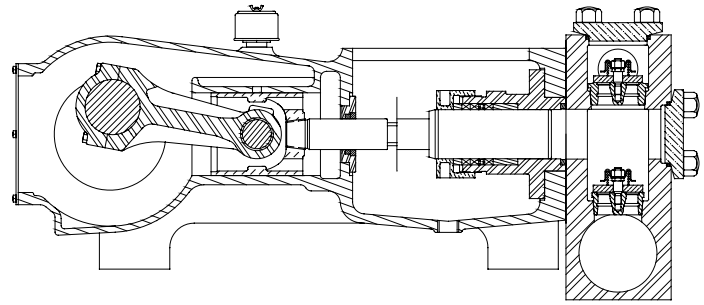


MYERS® APLEX SERIES

RO-261

TRIPLEX PLUNGER PUMP



REVERSE OSMOSIS SERVICE ONLY

No. of plungers.....	3
Maximum rated speed.....	450 rpm
Stroke length.....	4.50 in. 114.3 mm
Maximum rated power.....	200 HP 149.0 KW
Maximum rod load	11,750 lb. 52.17 kN
Weight	2680 lbs.

ENGLISH UNITS

RO-261

PLUNGER SIZE IN.	STUFFING BOX BORE IN.	MAX. PSI.	* GALLON PER/REV.	250 RPM US GPM	300 RPM US GPM	350 RPM US GPM	400 RPM US GPM	450 RPM US GPM
4.000	5.000	934	0.734	183.6	220.3	257.0	293.8	330.5
3.875	5.000	995	0.689	172.3	206.8	241.2	275.7	310.1
3.750	5.000	1063	0.645	161.4	193.6	225.9	258.2	290.5
3.625	5.000	1138	0.603	150.8	180.9	211.1	241.3	271.4
3.500	4.500	1220	0.562	140.6	168.7	196.8	224.9	253.0
3.375	4.500	1312	0.523	130.7	156.8	183.0	209.1	235.3
3.250	4.500	1415	0.485	121.2	145.4	169.7	193.9	218.2

HP REQUIRED @ RPM**

111.2 133.4 155.7 177.9 200.0

METRIC UNITS

RO-261

PLUNGER SIZE MM.	STUFFING BOX BORE MM.	MAX PRESS. BAR	* LITER PER/REV.	250 RPM LPM	300 RPM LPM	350 RPM LPM	400 RPM LPM	450 RPM LPM
101.6	127.0	64.4	2.780	695.0	834.0	973.0	1112.0	1251.0
98.4	127.0	68.6	2.609	652.2	782.7	913.1	1043.6	1174.0
95.3	127.0	73.3	2.444	610.9	733.0	855.2	977.4	1099.6
92.1	127.0	78.4	2.283	570.9	685.0	799.2	913.4	1027.5
88.9	114.3	84.1	2.129	532.1	638.5	745.0	851.4	957.8
85.7	114.3	90.5	1.979	494.8	593.7	692.6	791.6	890.6
82.5	114.3	97.6	1.835	458.8	550.6	642.3	734.1	825.8

KW REQUIRED @ RPM**

83.0 99.5 116.1 132.7 150.0

*Displacement based on 100% Volumetric Efficiency

**Power based on 90% Mechanical Efficiency

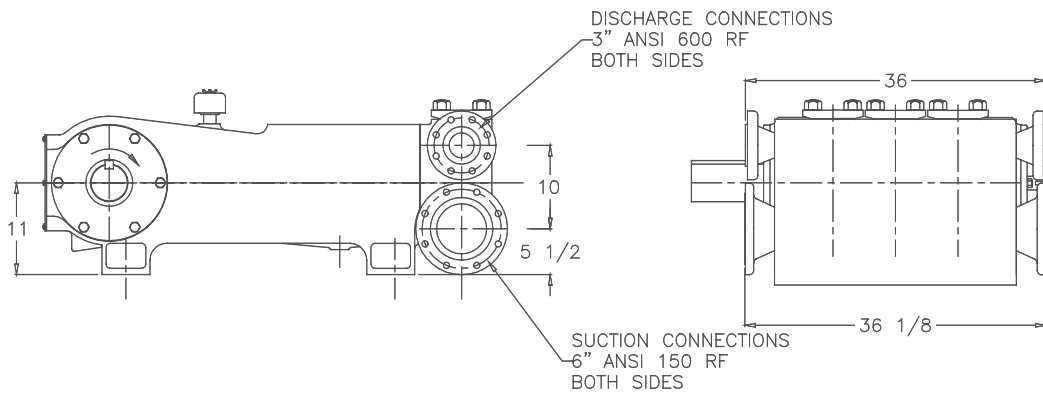
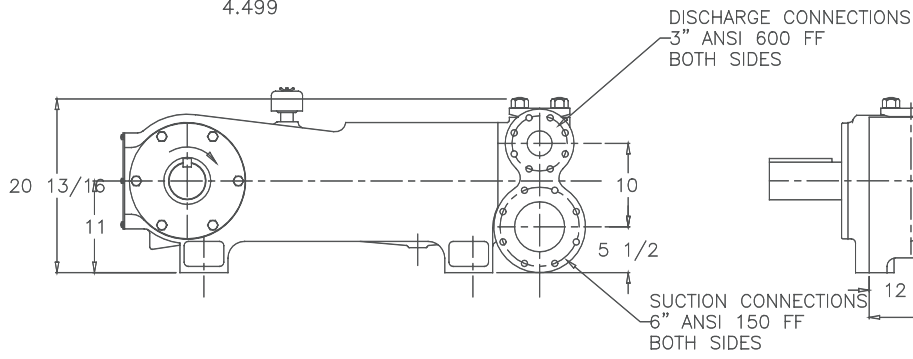
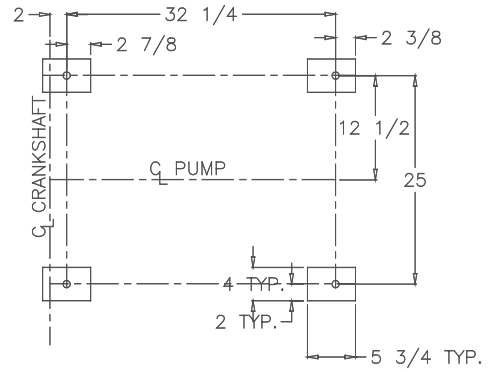
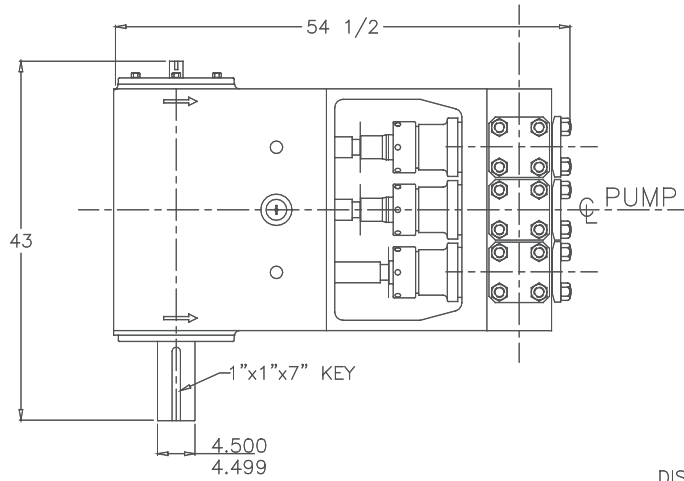
$$IHP = \frac{USGPM \times (\text{Discharge psig} - 1/2 \text{ Suction psig})}{1542}$$

$$IKW = \frac{M^3/HR \times (\text{Discharge Bar} - 1/2 \text{ Suction Bar})}{17.99}$$

$$PUMP \text{ RPM} = \frac{USGPM \text{ Desired}}{USGPM \text{ per Revolution of Selected Plunger}}$$

$$PUMP \text{ RPM} = \frac{M^3/HR \text{ Desired}}{M^3 \text{ per Revolution of Selected Plunger}}$$

RO-261 Triplex Pump



ENGINEERING DATA

RO-261 Triplex Pump

POWER END ENGINEERING DATA

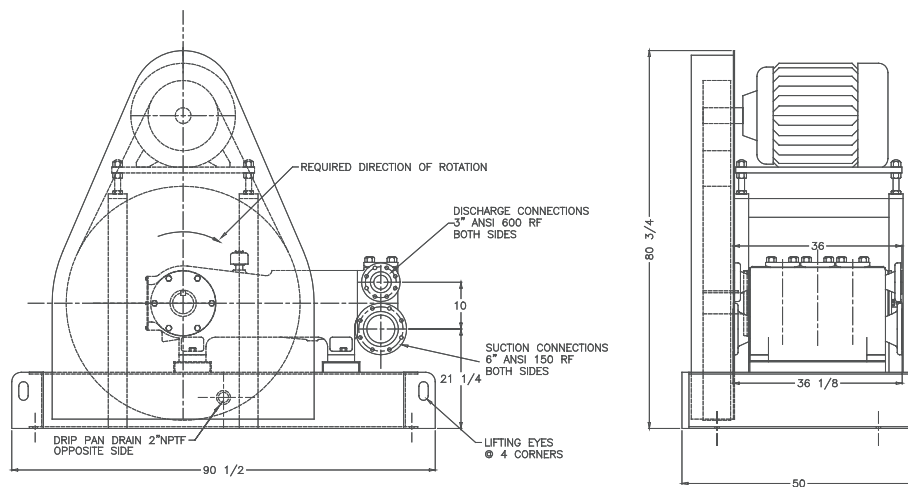
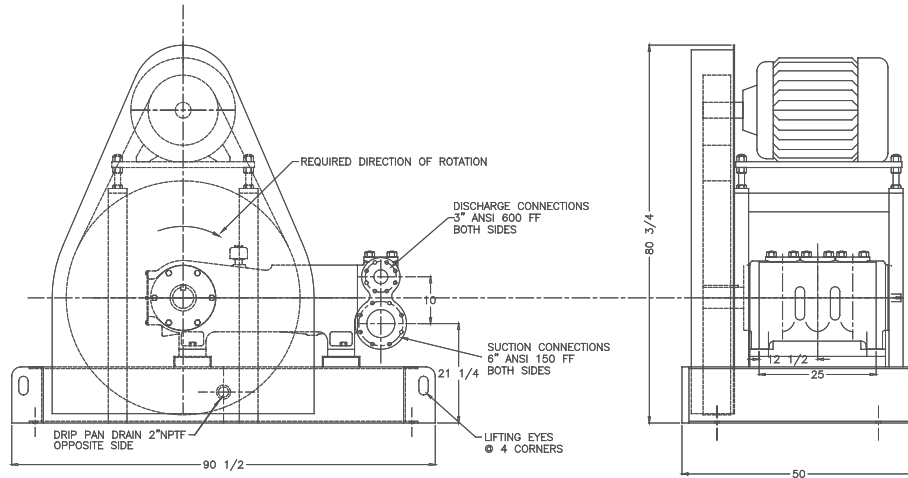
Max. Input Power @ Speed	200 HP @ 450 rpm
Rated Continuous Plunger Load	11,750 lb.
Normal Continuous Speed Range	300 to 420 rpm
Minimum Speed	100 rpm
Oil Capacity22 U.S. Qrts
Power End Oiling System	Splash
Power Frame, One-Piece	Cast Iron
Crosshead, Full Cylindrical	Cast Iron
Crosshead, Dia. x Length	5 3/4 x 6 3/16 in.
Crankshaft	Ductile Iron
Crankshaft Diameters:	
At Tapered Roller Bearings	4 3/4 in.
At Crankpin Bearings, Dia. x Length	4 1/2 x 3 3/4 in.
Crosshead (Wrist) Pin, Case-Hardened and Ground	AISI 8620
Crosshead pin S.A.E.660 Dia. x Length	2 5/8 x 3 5/8 in.
Main Bearings, Tapered Roller	Timken®
Crankpin Bearings, Precision Automotive	Steel Backed, Babbitt-Lined
Extension (Pony) Rod Diameter	2 1/2 in.
Connecting Rod, Automotive Type	Ductile Iron
Average Crosshead Speed @ 450 rpm	338 fpm
Minimum Life Expectancy, Main Bearings, L ₁₀	60,000+ hr.

LIQUID END ENGINEERING DATA

Max. Continuous Working Pressure	1,415 psi
Hydrostatic Test, Discharge	2,125 psi
Available Liquid End Materials, A.S.T.M.	
Nickel Aluminum Bronze	B148-C955
Stainless Steel Block	2205 Duplex S.ST.
Stainless Steel Block	316 S.ST.
Plunger Type "Rokide" (Chromium Oxide-Coated)	316 S.ST.
Stuffing Boxes, Field-Removable and Replaceable:	
Nickel Aluminum Bronze	B148-C955
Stainless Steel	316 S.ST.
Gland, Stuffing Box	Nickel Aluminum Bronze
Packing Types Available:	
Spring-loaded, cup-type	Style 120X
Spring-loaded, Garlock	Style 892IK
Seals, Stuffing Boxes and Valve Covers,	Buna-N
Available Valve Types:	
Standard, acetal resin	Delrin®
Optional, Hardened and Lapped	17-4 PH S.ST.
Valve Spring Material	Inconel®
Valve Seat, Liquid Passage Areas	6.54 sq.in.
Avg. Liquid Velocity @ 450 rpm:	
thru Valve	10.8 fps
thru Suction Manifold	3.7 fps
thru Discharge Manifold	16.1 fps

All drawings and specifications subject to change without notice.

RO-261 Triplex Pump



740 EAST 9TH STREET,
ASHLAND, OHIO 44805
WWW.MYERSAPLEX.COM

269 TRILLIUM DRIVE, KITCHENER,
ONTARIO, CANADA N2G 4W5
WWW.MYERSAPLEX.COM

Delrin® is a registered trademark of E.L. duPont
Inconel® is a registered trademark of the Special Metals family of companies
Timken® is a registered trademark of The Timken Company
Myers® is a registered trademark of Pentair Ltd.

Because we are continuously improving our products and services, Pentair reserves the right to change specifications without prior notice.
MA2011 03/09/13 © 2013 Pentair Ltd. All Rights Reserved.

www.powerzone.com