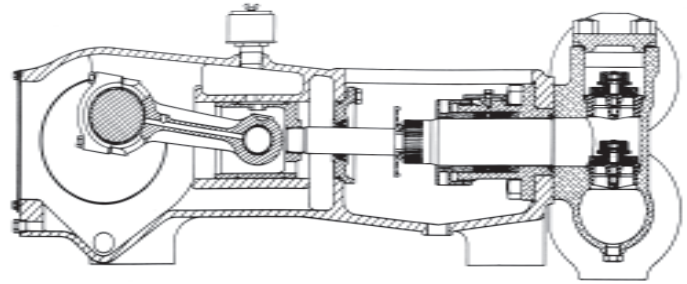


MYERS® APLEX SERIES

SC-170L TRIPLEX PLUNGER PUMP



No. of plungers.....	3
Maximum rated speed.....	450 rpm
Stroke length.....	4.25 in. 108 mm
Maximum rated power.....	230 HP 171 KW
Maximum rod load	14,280 lb. 63.4 kN
Weight.....	2050 lbs.

ENGLISH UNITS

SC-170L

	PLUNGER SIZE IN.	STUFFING BOX BORE IN.	MAX PSI.	* GALLON PER/REV.	250 RPM US GPM	300 RPM US GPM	350 RPM US GPM	400 RPM US GPM	450 RPM US GPM
Piston only	4.000	PISTON	1136	0.694	173.4	208.1	242.8	277.4	312.1
	3.500	4.500	1484	0.531	132.8	159.3	185.9	212.4	239.0
	3.375	4.500	1596	0.494	123.4	148.1	172.8	197.5	222.2
	3.250	4.500	1721	0.458	114.5	137.4	160.3	183.2	206.0
	3.125	4.000	1862	0.423	105.8	127.0	148.2	169.3	190.5
	<i>HP REQUIRED @ RPM**</i>					127.7	153.3	178.8	204.4

METRIC UNITS

SC-170L

	PLUNGER SIZE MM.	STUFFING BOX BORE MM.	MAX PRESS. BAR	* LITER PER/ REV.	250 RPM LPM	300 RPM LPM	350 RPM LPM	400 RPM LPM	450 RPM LPM
Piston only	101.6	PISTON	78.3	2.626	656.4	787.7	919.0	1050.2	1181.5
	88.9	114.3	102.3	2.010	502.5	603.0	703.5	804.0	904.5
	85.3	114.3	110.0	1.869	467.3	560.8	654.2	747.7	841.1
	82.6	114.3	118.7	1.733	433.3	520.0	606.7	693.3	780.0
	79.4	101.6	128.4	1.602	400.6	480.7	560.8	641.0	721.1
	<i>KW REQUIRED @ RPM**</i>					95.2	114.3	133.3	152.4

**Displacement based on 100% Volumetric Efficiency*

***Power based on 90% Mechanical Efficiency*

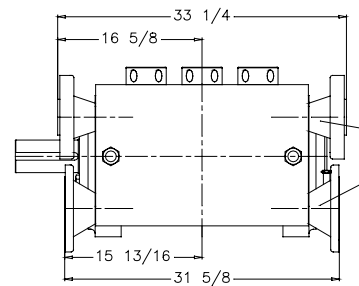
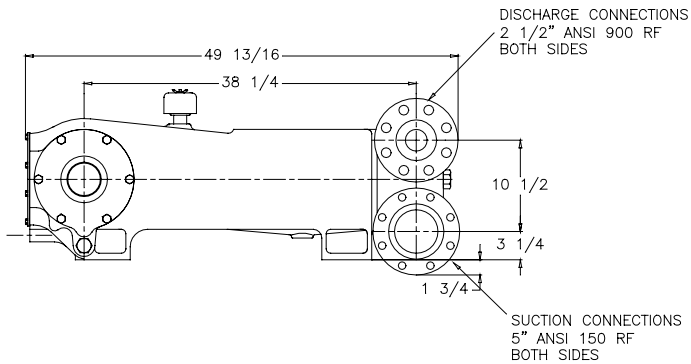
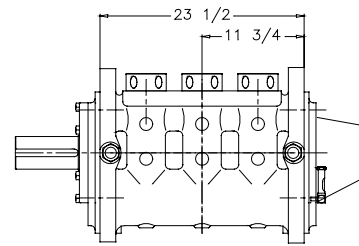
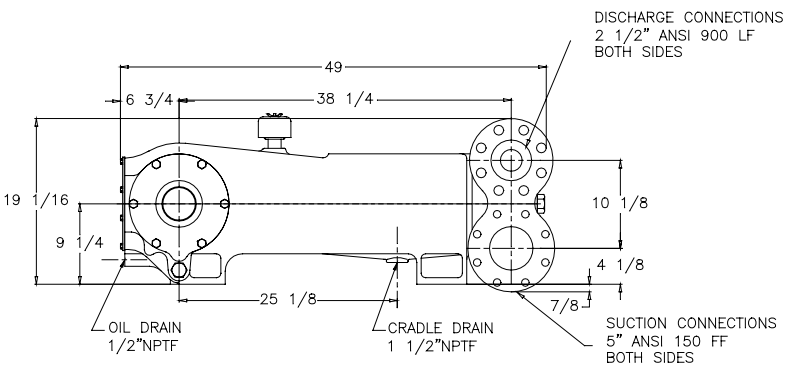
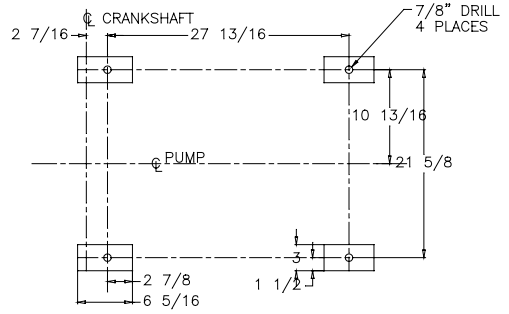
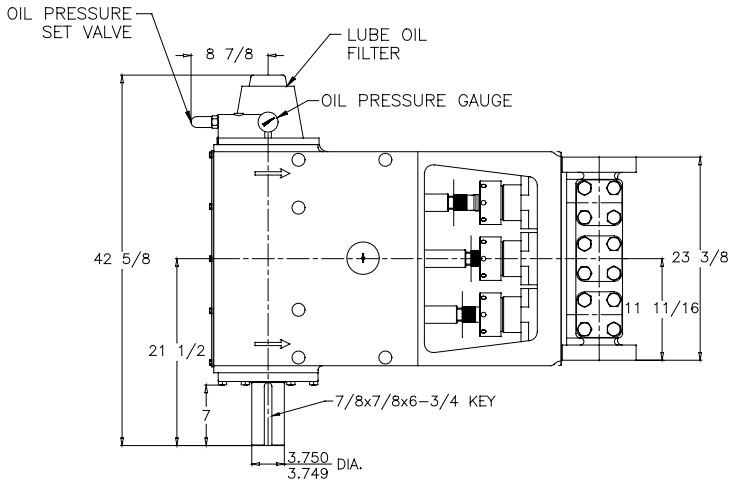
$$IHP = \frac{USGPM \times (\text{Discharge psig} - 1/2 \text{ Suction psig})}{1542}$$

$$IKW = \frac{M^3/HR \times (\text{Discharge Bar} - 1/2 \text{ Suction Bar})}{17.99}$$

$$PUMP \text{ RPM} = \frac{USGPM \text{ Desired}}{USGPM \text{ per Revolution of Selected Plunger}}$$

$$PUMP \text{ RPM} = \frac{M^3/HR \text{ Desired}}{M^3 \text{ per Revolution of Selected Plunger}}$$

SC-170L Triplex Pump



ENGINEERING DATA

SC-170L Triplex Pump

POWER END ENGINEERING DATA

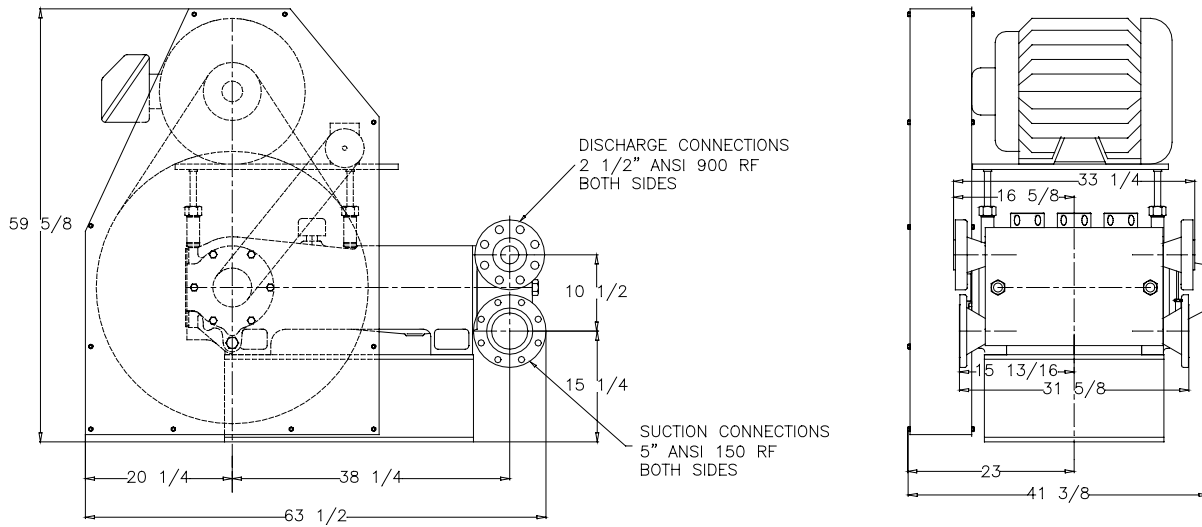
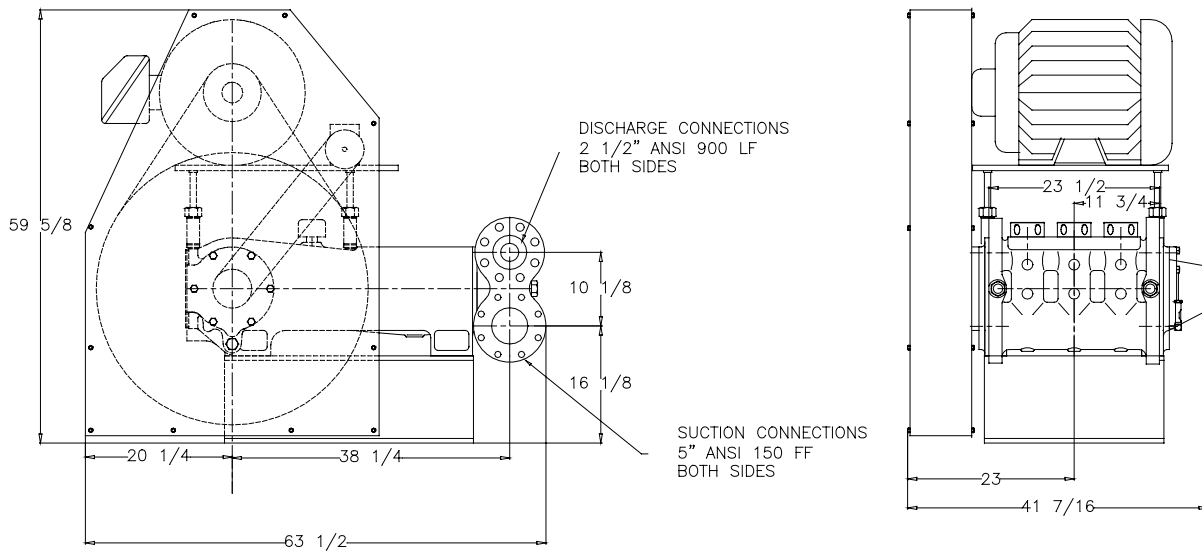
Max. Input HP @ Speed	230 @ 450 RPM
Rated Continuous Plunger Load	14,280 lb.
Max. Rated Continuous Speed	450 RPM
Normal Continuous Speed Range	150 to 420 RPM
Minimum Speed	100 RPM
Oil Capacity	18 U.S. Qrts
Power End Oiling System	Pressure Lubrication
Power Frame, One-Piece	Cast Iron
Crosshead, Full Cylindrical	Cast Iron
Crosshead, Dia. x Length	5 3/4 x 6 3/16 inches
Crankshaft	Forged and Nitrided Steel
Crankshaft Diameters:	
At Tapered Roller Bearings	4 in.
At Crankpin Bearings, Dia. x Length	4 x 3 inches
Crosshead (Wrist) Pin, Case-Hardened and Ground	AISI 8620
Main Bearings, Tapered Roller	Timken®
Crankpin Bearings, Precision Automotive	Steel Backed, Babbitt-Lined
Extension (Pony) Rod, Integral w/ Plungers	316 S.S.
Connecting Rod, Automotive Type	Ductile Iron
Average Crosshead Speed @ 450 rpm	318 fpm
Minimum Life Expectancy, Main Bearings, L ₁₀	45,000+ hr.

LIQUID END ENGINEERING DATA

Max. Continuous Working Pressure	1862 psi
Hydrostatic Test	3330 psi
Available Liquid End Materials, A.S.T.M.	
Carbon Steel Block	A105
Ductile Iron Casting	A536 80-55-06
Plunger Type "Rokide" (Chromium Oxide-Coated)	316 S.S.
Stuffing Boxes, Field-Removable and Replaceable	Ductile Iron
Packing Types Available	
Spring-loaded, Braided Teflon & Kevlar	Style 140
Spring-loaded, cup-type	Style 120X
Valve Cover and Cyl. Head Plugs	316 S.S.
Piston Liner Type	Chrome Oxide Coated 4140
Piston Cups Available:	
Urethane	
HSN and Kevlar	
Nitrile	
Retainer Plates, Ductile Iron, A.S.T.M.	A536 80-55-06
Seals, Stuffing Boxes, Valve Covers, Cyl. Heads	Buna-N
Disc Valve Types	
Regularly furnished, Abrasion Resistant	17-4PH S.S. and Polyurethane Insert
Optional, Hardened and Lapped	17-4 PH S.S.
Valve Seat, Liquid Passage Areas	6.26 sq.in.
Avg. Liquid Velocity with 3 1/2" plungers @ 450 rpm	
thru Valves	7.26 fps
thru Suction Manifold	3.82 fps
thru Discharge Manifold	18.09 fps

All drawings and specifications subject to change without notice.

SC-170L Triplex Pump



740 EAST 9TH STREET, ASHLAND, OHIO 44805
WWW.MYERSAPLEX.COM

269 TRILLIUM DRIVE, KITCHENER, ONTARIO, CANADA N2G 4W5
WWW.MYERSAPLEX.COM

Timken® is a registered trademark of The Timken Company
Myers® is a registered trademark of Pentair Ltd.

Because we are continuously improving our products and services, Pentair reserves the right to change specifications without prior notice.
MA4020 03/13/13 © 2013 Pentair Ltd. All Rights Reserved.