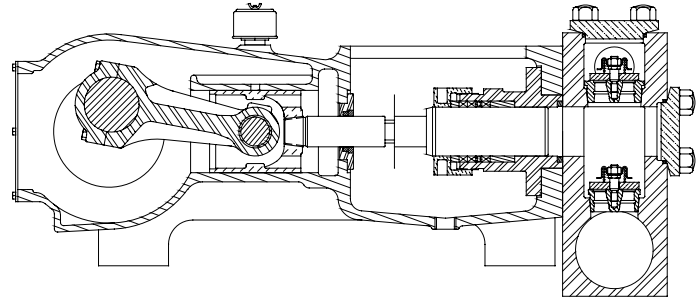


# MYERS® APLEX SERIES

## SC-230

### TRIPLEX PISTON/PLUNGER PUMP



#### Intermittent Duty Only

No. of pistons/plungers .....	3
Maximum rated speed .....	450rpm
Stroke length.....	4.50 in.      114.3 mm
Maximum rated power.....	310 HP      231.0 KW
Maximum rod load .....	18,320 lb.      81.34 kN
Weight .....	2680 lbs.

ENGLISH UNITS								
PLUNGER SIZE IN.	STUFFING BOX BORE IN.	MAX PSI	*GALLON PER./REV	250 RPM USGPM	300 RPM USGPM	350 RPM USGPM	400 RPM USGPM	450 RPM USGPM
4.500	5.250	1152	0.929	232.4	278.8	325.3	371.8	418.3
4.250	5.250	1291	0.829	207.3	248.7	290.2	331.6	373.1
4.000	5.000	1458	0.734	183.6	220.3	257.0	293.8	330.5
3.875	5.000	1553	0.689	172.3	206.8	241.2	275.7	310.1
3.750	5.000	1659	0.645	161.4	193.6	225.9	258.2	290.5
3.625	5.000	1775	0.603	150.8	180.9	211.1	241.3	271.4
3.500	4.500	1904	0.562	140.6	168.7	196.8	224.9	253.0
3.375	4.500	2048	0.523	130.7	156.8	183.0	209.1	235.3
3.250	4.500	2208	0.485	121.2	145.4	169.7	193.9	218.2
3.125	4.000	2388	0.448	112.1	134.5	156.9	179.3	201.7
3.000	4.000	2591	0.413	103.3	123.9	144.6	165.2	185.9
2.875	4.000	2821	0.379	94.8	113.8	132.8	151.8	170.7
2.750	3.500	3084	0.347	86.8	104.1	121.5	138.8	156.2
<b>HP REQUIRED @ RPM**</b>				173.6	208.3	243.0	277.8	310.0

METRIC UNITS								
PLUNGER SIZE M.M	STUFFING BOX BORE MM.	MAX PRESS. BAR	*LITER PER./REV	250 RPM LPM	300 RPM LPM	350 RPM LPM	400 RPM LPM	450 RPM LPM
114.3	133.4	79.4	3.519	879.6	1055.6	1231.5	1407.4	1583.3
108.0	133.4	89.0	3.139	784.6	941.6	1098.5	1255.4	1412.3
101.6	127.0	100.5	2.780	695.0	834.0	973.0	1112.0	1251.0
98.4	127.0	107.1	2.609	652.2	782.7	913.1	1043.6	1174.0
95.3	127.0	114.4	2.444	610.9	733.0	855.2	977.4	1099.6
92.0	127.0	122.4	2.283	570.9	685.0	799.2	913.4	1027.5
88.9	114.3	131.3	2.129	532.1	638.5	745.0	851.4	957.8
85.7	114.3	141.2	1.978	494.5	593.4	692.3	791.2	890.1
82.6	114.3	152.2	1.835	458.8	550.5	642.3	734.0	825.8
79.4	101.6	164.6	1.697	424.2	509.0	593.8	678.6	763.5
76.2	101.6	178.6	1.564	391.0	469.1	547.3	625.5	703.7
73.0	101.6	194.5	1.436	359.0	430.9	502.7	574.5	646.3
69.9	88.9	212.6	1.314	328.5	394.2	459.9	525.6	591.3
<b>KW REQUIRED @ RPM**</b>				129.5	155.3	181.2	207.2	231.2

\*Displacement based on 100% Volumetric Efficiency

\*\*Power based on 90% Mechanical Efficiency

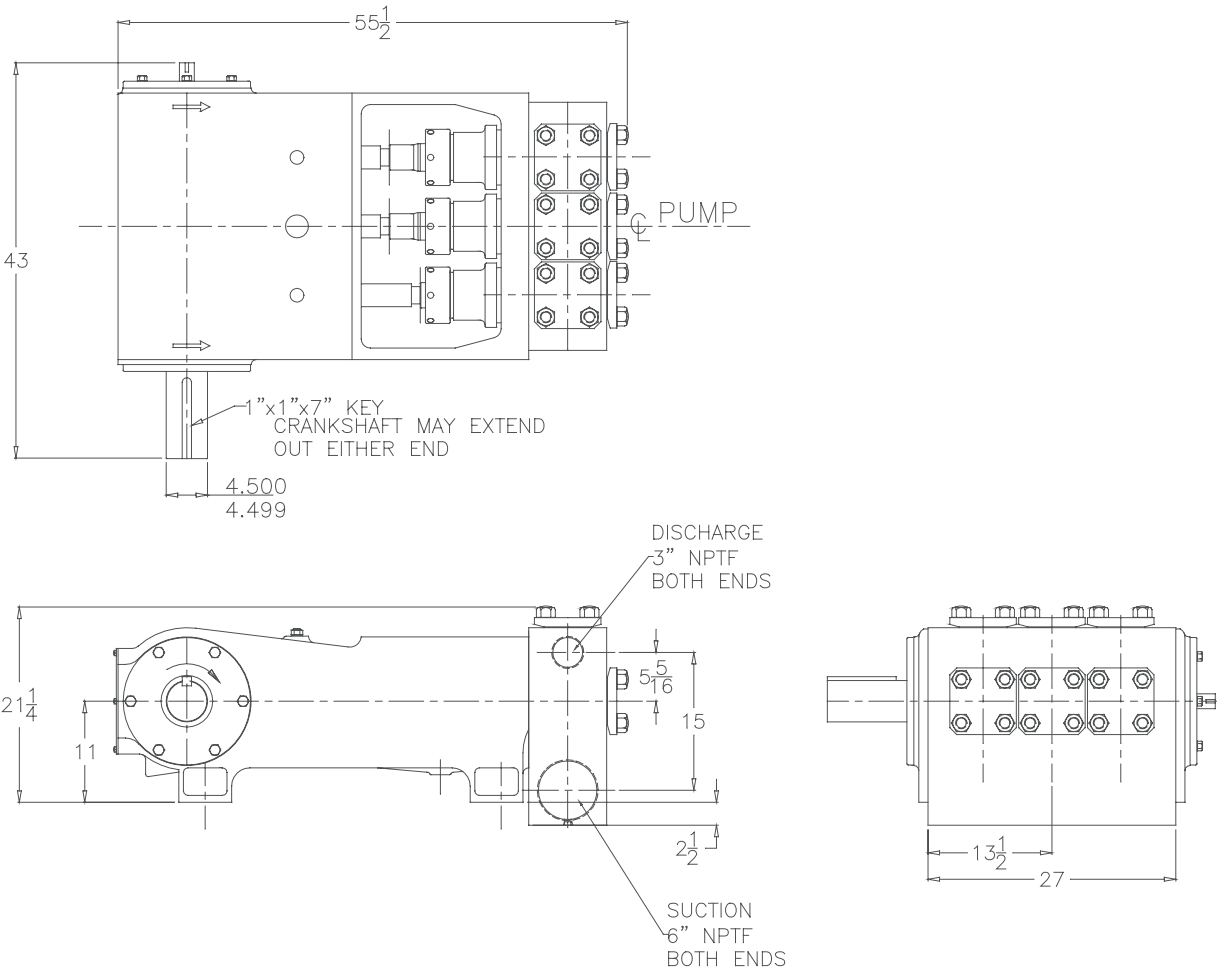
$$IHP = \frac{USGPM \times (\text{Discharge psig} - 1/2 \text{ Suction psig})}{1542}$$

$$IKW = \frac{M^3/HR \times (\text{Discharge Bar} - 1/2 \text{ Suction Bar})}{17.99}$$

$$PUMP RPM = \frac{USGPM \text{ Desired}}{USGPM \text{ per Revolution of Selected Plunger}}$$

$$PUMP RPM = \frac{M^3/HR \text{ Desired}}{M^3 \text{ per Revolution of Selected Plunger}}$$

# SC-230 Triplex Pump



# ENGINEERING DATA

## SC-230 Triplex Pump

### POWER END ENGINEERING DATA

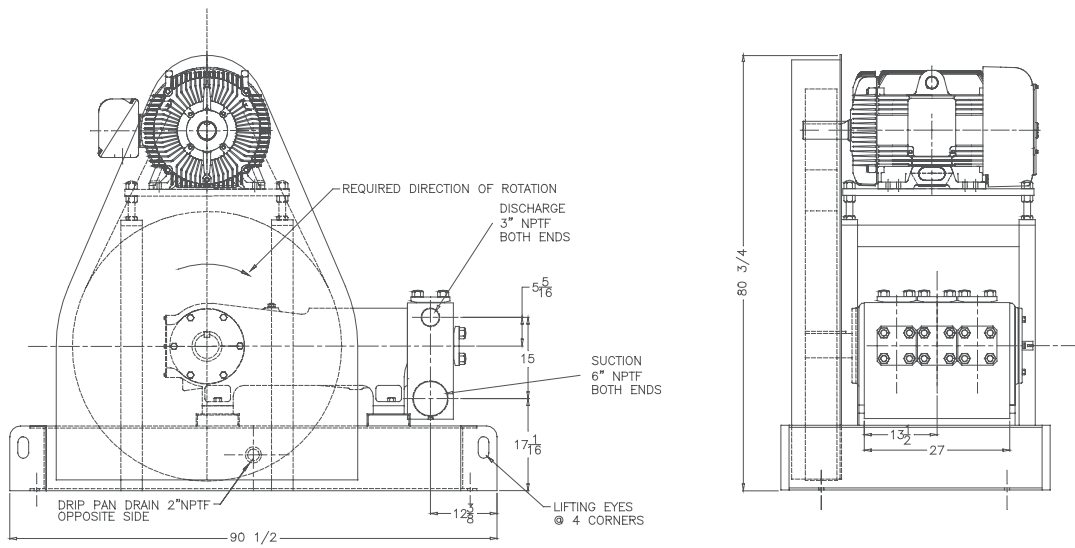
Max. Input Power @ Speed .....	310 HP @ 450 rpm
Rated Continuous Plunger Load .....	18,320 lb.
Normal Continuous Speed Range .....	150 to 420 rpm
Minimum Speed .....	100 rpm
Oil Capacity .....	22 U.S. Qrts
Power End Oiling System .....	Pressure Lubrication System
Power Frame, One-Piece .....	Cast Iron
Crosshead, Full Cylindrical .....	Cast Iron
Crosshead, Dia. x Length.....	5 3/4 x 6 3/16 in.
Crankshaft .....	Ductile Iron
Crankshaft Diameters:	
At Tapered Roller Bearings .....	4 3/4 in.
At Crankpin Bearings, Dia. x Length.....	4 1/2 x 3 3/4 in.
Crosshead (Wrist) Pin, Case-Hardened and Ground .....	AISI 8620
Main Bearings, Tapered Roller .....	Timken®
Crankpin Bearings, Precision Automotive .....	Babbitt-Lined
Extension (Pony) Rod Integral w/ Plungers .....	17-4 PH S.ST.
Connecting Rod, Automotive Type .....	Ductile Iron
Average Crosshead Speed @ 450 rpm .....	338 fpm
Minimum Life Expectancy, Main Bearings, L <sub>10</sub> .....	20,000+ hr.

### LIQUID END ENGINEERING DATA

Max. Continuous Working Pressure .....	2,208 psi
Hydrostatic Test .....	3,300 psi
Liquid End Materials, A.S.T.M.	
Carbon Steel.....	A516 Gr.70
Piston Type.....	Rubber
Liners .....	Hardened Steel
Plunger Type “Rokide” Stainless Steel, (Chromium Oxide-Coated) .....	416 or 316 S.ST.
Stuffing boxes, Field-Removable and Replaceable, Carbon Steel .....	1020
Packing Types Available:	
Gland-loaded, Non-Adjustable .....	Style 838
Spring-loaded, Braided Teflon & Kevlar .....	Style 140
Spring-loaded, cup-type .....	Style 120X
Spring-loaded, Garlock .....	Style 892IK
Valve Cover and Cyl. Head Plugs .....	A36.
Seals, Stuffing Boxes, Valve Covers .....	Buna-N
Valve Type.....	Abrasion Resistant
Valve Type.....	17-4PH S.ST.
Valve Spring Material .....	Inconel®
Valve Seat, Liquid Passage Area .....	6.5 sq.in.
Avg. Liquid Velocity, with 4” Plungers @ 450 RPM	
thru Valves .....	6.5 fps
thru Suction Manifold.....	3.7 fps
thru Discharge Manifold.....	16.1 fps

All drawings and specifications subject to change without notice.

# SC-230 Triplex Pump



740 EAST 9TH STREET,  
ASHLAND, OHIO 44805  
WWW.MYERSAPLEX.COM

269 TRILLIUM DRIVE, KITCHENER,  
ONTARIO, CANADA N2G 4W5  
WWW.MYERSAPLEX.COM

Inconel® is a registered trademark of the Special Metals family of companies  
Timken® is a registered trademark of The Timken Company  
Myers® is a registered trademark of Pentair Ltd.

Because we are continuously improving our products and services, Pentair reserves the right to change specifications without prior notice.  
MA3013 03/13/13 © 2013 Pentair Ltd. All Rights Reserved.

[www.powerzone.com](http://www.powerzone.com)