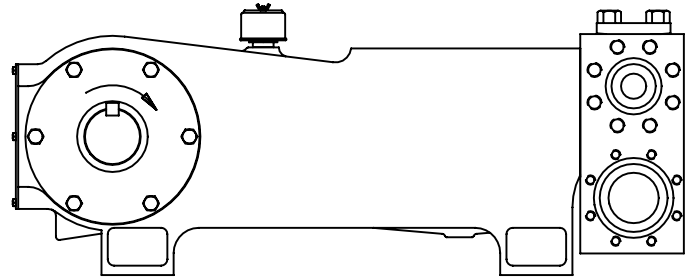




**MYERS® APLEX SERIES**

**SC-230H**

TRIPLEX PLUNGER PUMP



No. of plungers .....	3
Maximum rated speed .....	450 rpm
Stroke length.....	4.50 in.      114.3 mm
Maximum rated power.....	310 HP      230 KW
Maximum load .....	18,320 lb.      81.5 kN
Weight .....	2935 lbs.

ENGLISH UNITS								
PLUNGER SIZE IN.	STUFFING BOX BORE IN.	MAX PSI	*GALLON PER./REV	200 RPM USGPM	300 RPM USGPM	400 RPM USGPM	500 RPM USGPM	600 RPM USGPM
2.500	3.500	3732	0.2868	71.7	86.0	100.4	144.7	129.1
2.375	3.000	4135	0.2588	64.7	77.6	90.6	103.5	116.5
2.250	3.000	4607	0.2323	58.1	69.7	81.3	92.9	104.5
2.125	3.000	5165	0.2072	51.8	62.2	72.5	82.9	93.2
2.000	3.000	5831	0.1835	45.9	55.1	64.2	73.4	82.6
HP REQUIRED @ RPM**				173	208	243	277	310

METRIC UNITS								
PLUNGER SIZE M.M	STUFFING BOX BORE MM.	MAX PRESS. BAR	*LITER PER./REV	200 RPM LPM	300 RPM LPM	400 RPM LPM	500 RPM LPM	600 RPM LPM
63.5	88.9	257.4	1.0855	271.4	325.6	379.9	434.2	488.5
60.3	76.2	285.2	0.9795	244.9	293.8	342.8	391.8	440.8
57.1	76.2	317.7	0.8792	219.8	263.8	307.7	351.7	395.6
53.9	76.2	356.2	0.7842	196.0	235.3	274.5	313.7	352.9
50.8	76.2	402.1	0.6945	173.6	208.4	243.1	277.8	312.5
KW REQUIRED @ RPM**				129	155	181	206	231

\*Displacement based on 100% Volumetric Efficiency

\*\*Power based on 90% Mechanical Efficiency

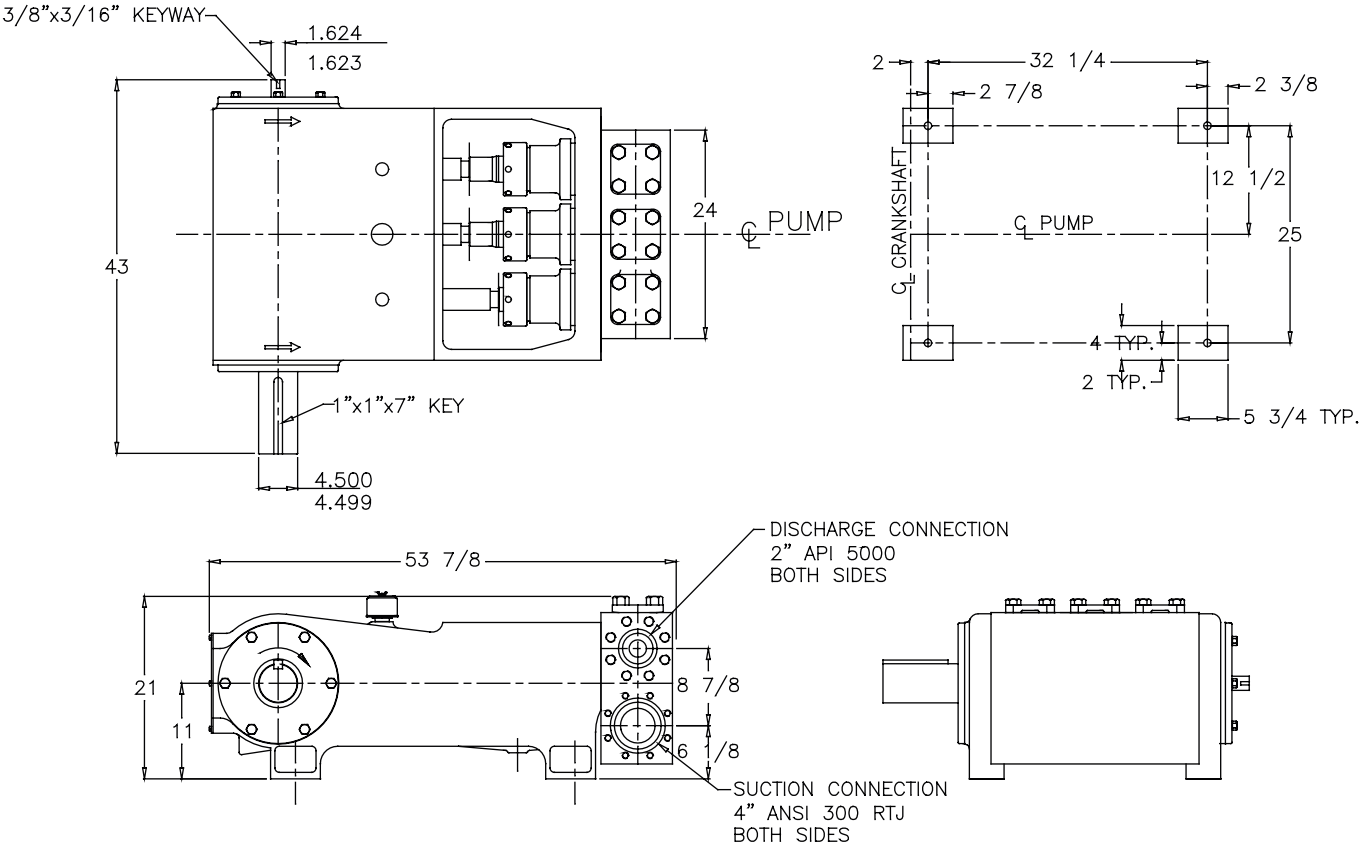
$$IHP = \frac{USGPM \times (\text{Discharge psig} - 1/2 \text{ Suction psig})}{1542}$$

$$IKW = \frac{M^3/HR \times (\text{Discharge Bar} - 1/2 \text{ Suction Bar})}{17.99}$$

$$PUMP \text{ RPM} = \frac{USGPM \text{ Desired}}{USGPM \text{ per Revolution of Selected Plunger}}$$

$$PUMP \text{ RPM} = \frac{M^3/HR \text{ Desired}}{M^3 \text{ per Revolution of Selected Plunger}}$$

# SC-230H Triplex Pump



# ENGINEERING DATA

## SC-230H Triplex Pump

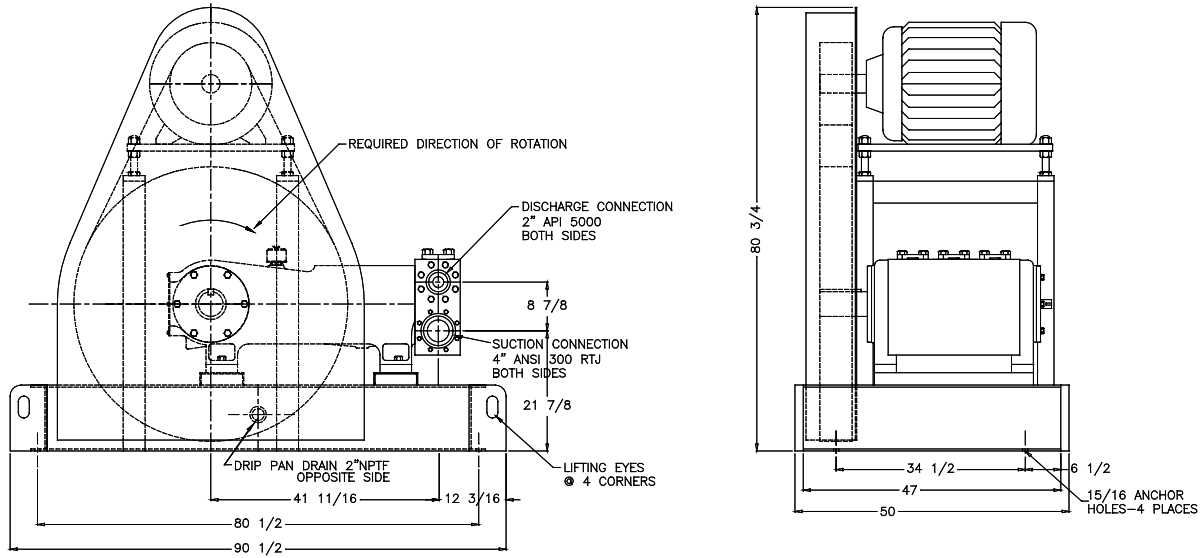
### POWER END ENGINEERING DATA

Max. Input Power @ Speed.....	310 HP @ 450 rpm
Rated Continuous Plunger Load .....	18,320 lb.
Max. Rated Continuous Speed.....	450 rpm
Normal Continuous Speed Range .....	150 to 350 rpm
Minimum Speed .....	100 rpm
Oil Capacity .....	22 U.S. Qrts
Power End Oiling System .....	Splash & Scoop
Power Frame, One-Piece .....	Cast Iron
Crosshead, Full Cylindrical .....	Cast Iron
Crosshead, Dia. x Length .....	5 3/4 x 6 3/16 in.
Crankshaft .....	Ductile Iron
Crankshaft Diameters:	
At Tapered Roller Bearings .....	4 3/4 in.
At Crankpin Bearings, Dia. x Length .....	4 1/2 x 3 3/4 in.
Crosshead (Wrist) Pin, Case-Hardened and Ground .....	AISI 8620
Wrist Pin Bushing, SAE 660, dia. x width .....	1 5/16 x 2 in.
Main Bearings, Tapered Roller .....	Timken®
Crankpin Bearings, Precision Automotive .....	Steel Backed, Babbitt-Lined
Extension (Pony) Rod .....	17-4 PH S.S.
Connecting Rod, Automotive Type .....	Ductile Iron
Average Crosshead Speed @ 450 rpm .....	338 fpm
Minimum Life Expectancy, Main Bearings, L <sub>10</sub> .....	40,000+ hrs.

### LIQUID END ENGINEERING DATA

Max. Continuous Working Pressure .....	5,000 psi
Hydrostatic Test .....	7,500 psi
Available Liquid End Materials, A.S.T.M.	
Carbon Steel Block .....	4140
Stainless Steel Block .....	2205 Duplex or 15-5 PH S.S.
Plunger Type Rokide® (Chromium Oxide-Coated) .....	316 S.S.
Packing Types Available:	
Spring-loaded, Chevron .....	Style 120X
Spring-loaded, Kevlar® Compression .....	Style 140
Seals, Stuffing Boxes, Valve Covers, Cyl. Heads .....	Buna-N
Available Valve Types:	
Standard, Disc, Hardened and Lapped .....	17-4 PH S.S.
Optional, Abrasion Resistant, Hardened .....	17-4PH S.S.
Valve Spring Material .....	Inconel®
Valve Seat, Liquid Passage Area .....	2.3 sq.in.
Avg. Liquid Velocity with 1 3/4" plungers @ 450 rpm:	
thru Valves.....	5.9 fps
thru Suction Manifold .....	2.8 fps
thru Discharge Manifold .....	16.5 fps

# SC-230H Triplex Pump



740 EAST 9TH STREET,  
ASHLAND, OHIO 44805  
WWW.FEMYERS.COM

490 PINEBUSH ROAD, UNIT 4,  
CAMBRIDGE, ONTARIO N1T 0A5  
WWW.FEMYERS.COM

Kevlar® is a registered trademarks of E. I. du Pont de Nemours and Company.  
Inconel® is a registered trademark of the Special Metals family of companies.  
Timken® is a registered trademark of The Timken Company. Rokide® is a registered trademark of Saint-Gobain Abrasives, Inc.  
Myers® is a registered trademark of Pentair Ltd.

Because we are continuously improving our products and services, Pentair reserves the right to change specifications without prior notice.  
MA3022 01/06/14 © 2014 Pentair Ltd. All Rights Reserved.

[www.powerzone.com](http://www.powerzone.com)