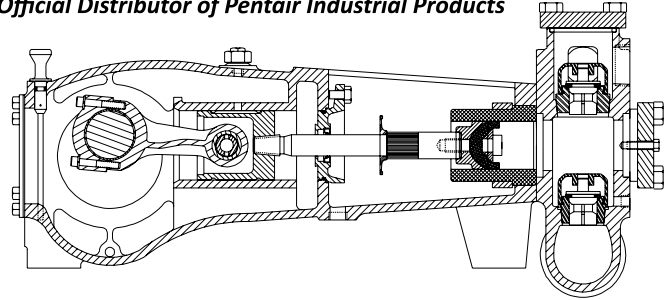




POWER ZONE
Equipment, Inc.
Official Distributor of Pentair Industrial Products

MYERS® APLEX SERIES

SC-45L TRIPLEX PUMP



Intermittent Duty Only

| | |
|--------------------------|-------------------|
| No. of cylinders..... | 3 |
| Maximum rated speed..... | 600 rpm |
| Stroke length..... | 2.25 in. 57.2 mm |
| Maximum rated power..... | 60.0 HP 44.7 KW |
| Maximum rod load | 5280 lb. 23.44 kN |
| Weight..... | 463 lbs. |

ENGLISH UNITS

SC-45L

| PLUNGER SIZE IN. | STUFFING BOX BORE IN. | MAX PSI | *GALLON PER/REV. | 200 RPM US GPM | 300 RPM US GPM | 400 RPM US GPM | 500 RPM US GPM | 600 RPM US GPM |
|----------------------------|--------------------------|---------|---------------------|-------------------|-------------------|-------------------|-------------------|-------------------|
| 2.250 | 2.875 | 1330 | 0.1162 | 23.2 | 34.9 | 46.5 | 58.1 | 69.7 |
| 2.125 | 2.875 | 1491 | 0.1036 | 20.7 | 31.1 | 41.5 | 51.8 | 62.2 |
| 2.000 | 2.875 | 1683 | 0.0918 | 18.4 | 27.5 | 36.7 | 45.9 | 55.1 |
| <i>HP REQUIRED @ RPM**</i> | | | | 20.0 | 30.1 | 40.1 | 50.1 | 60.0 |

METRIC UNITS

SC-45L

| PLUNGER SIZE MM. | STUFFING BOX BORE MM. | MAX PRESS. BAR | *LITER PER/REV. | 200 RPM LPM | 300 RPM LPM | 400 RPM LPM | 500 RPM LPM | 600 RPM LPM |
|----------------------------|--------------------------|-------------------|--------------------|----------------|----------------|----------------|----------------|----------------|
| 57.2 | 73.0 | 91.7 | 0.4399 | 88.0 | 132.0 | 176.0 | 220.0 | 263.9 |
| 54.0 | 73.0 | 102.8 | 0.3922 | 78.4 | 117.7 | 156.9 | 196.1 | 235.3 |
| 50.8 | 73.0 | 116.0 | 0.3475 | 69.5 | 104.3 | 139.0 | 173.8 | 208.5 |
| <i>KW REQUIRED @ RPM**</i> | | | | 14.9 | 22.4 | 29.9 | 37.4 | 44.7 |

*Displacement based on 100% Volumetric Efficiency

**Power based on 90% Mechanical Efficiency

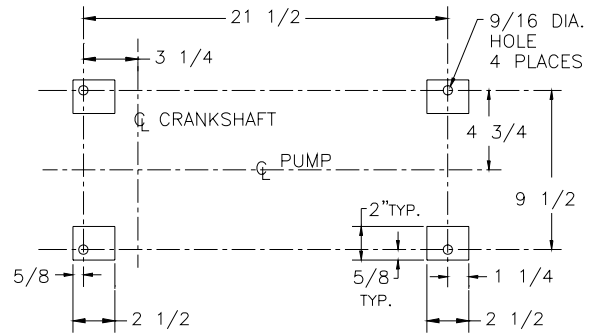
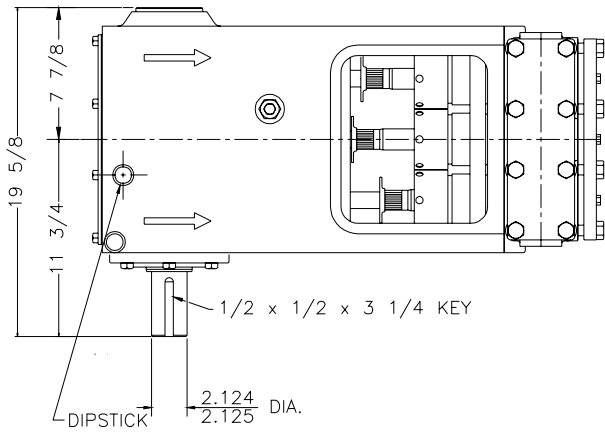
$$IHP = \frac{USGPM \times (\text{Discharge psig} - 1/2 \text{ Suction psig})}{1542}$$

$$IKW = \frac{M^3/HR \times (\text{Discharge Bar} - 1/2 \text{ Suction Bar})}{17.99}$$

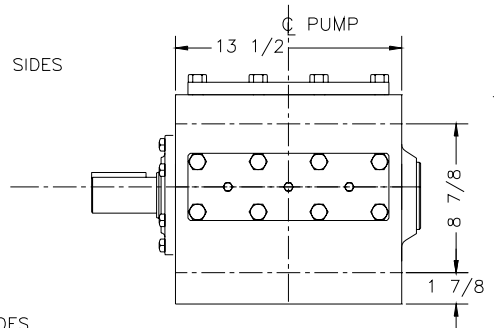
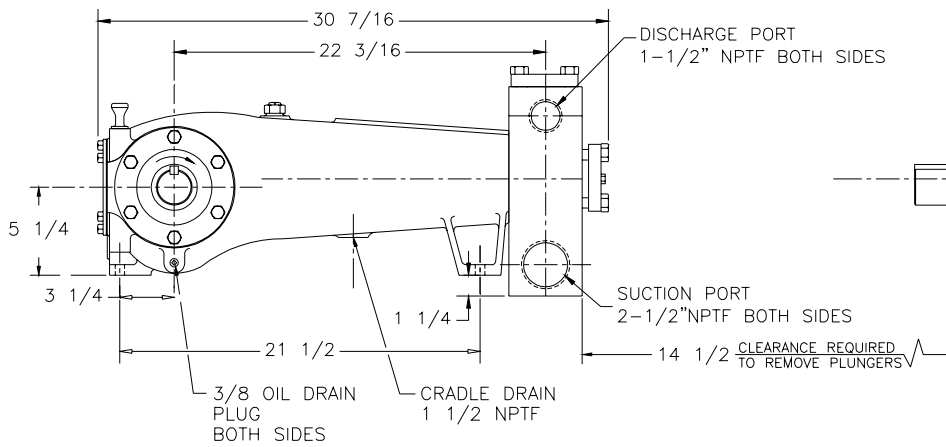
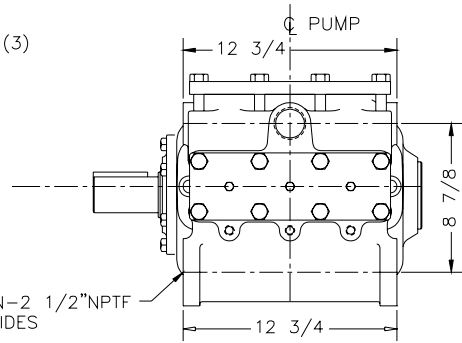
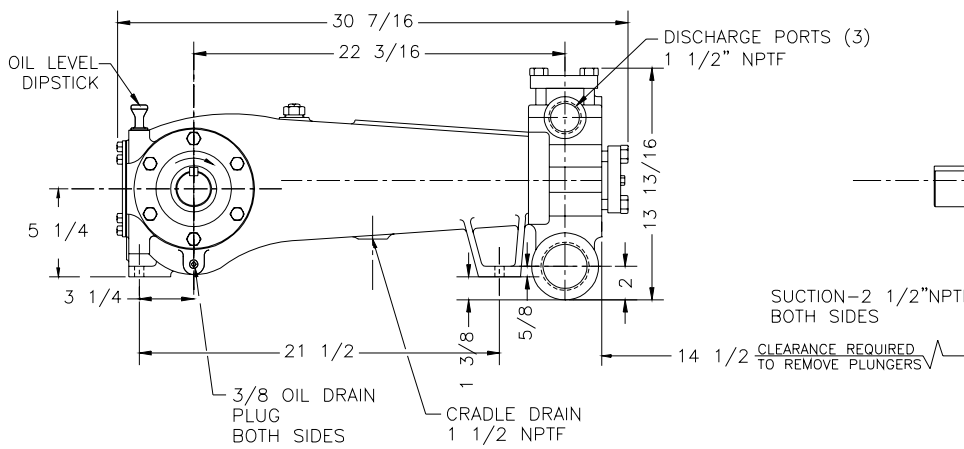
$$PUMP \text{ RPM} = \frac{USGPM \text{ Desired}}{USGPM \text{ per Revolution of Selected Plunger}}$$

$$PUMP \text{ RPM} = \frac{M^3/HR \text{ Desired}}{M^3 \text{ per Revolution of Selected Plunger}}$$

SC-45L Triplex Pump



FOUNDATION PLAN



ENGINEERING DATA

SC-45L Triplex Pump

POWER END ENGINEERING DATA

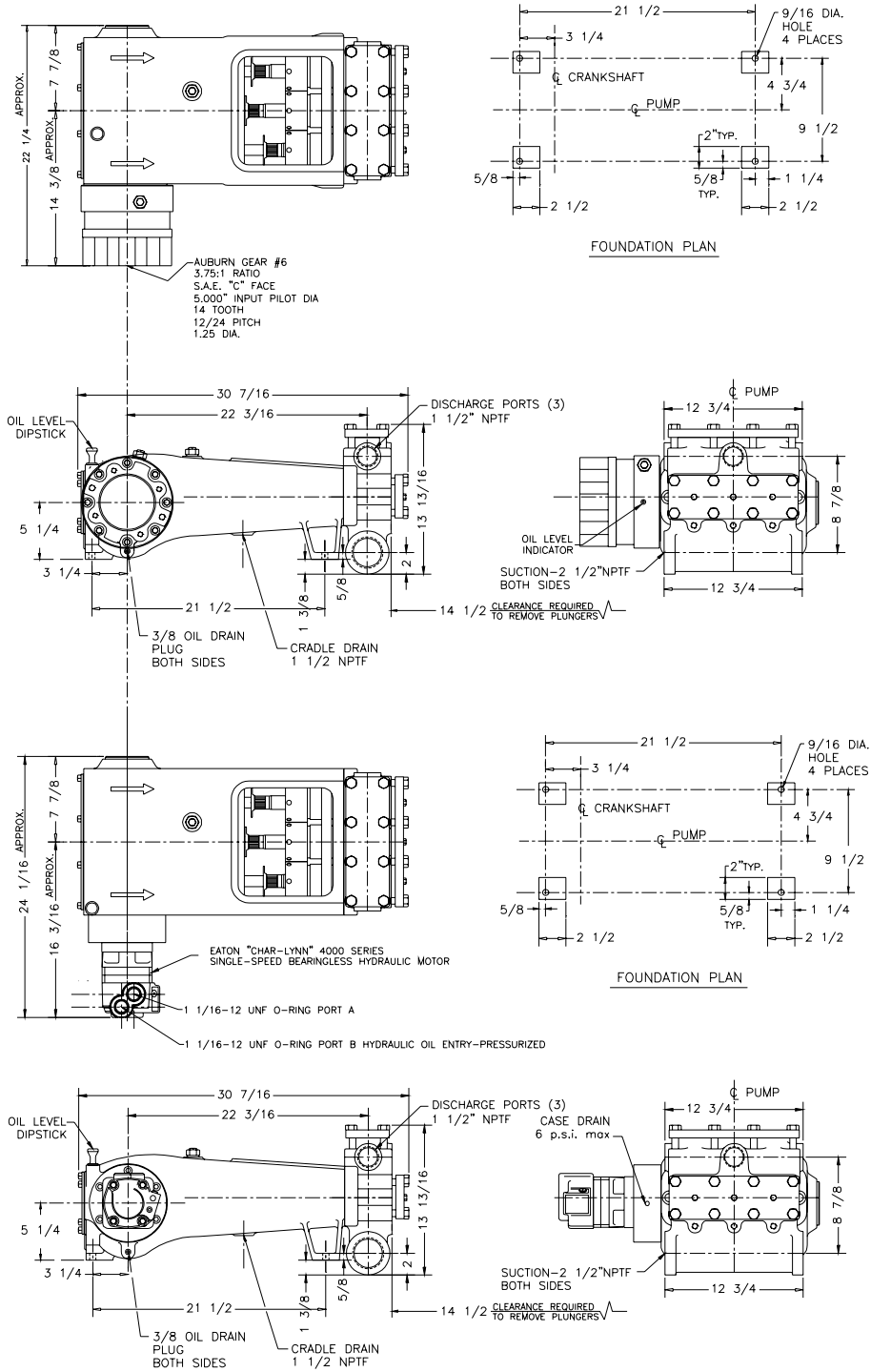
| | |
|---|-------------------|
| Max. Input HP @ Speed | 60 HP @ 600 rpm |
| Rated Continuous Plunger Load | 5,280 lb. |
| Normal Continuous Speed Range | 150 to 500 rpm |
| Minimum Speed | 100 rpm |
| Oil Capacity | 5 U.S. Qrts |
| Power End Oiling System | Splash & Scoop |
| Power Frame, One-Piece | Cast Iron |
| Crosshead, Full Cylindrical | Cast Iron |
| Crosshead, Dia. x Length | 3 1/4 x 3 5/8 in. |
| Crankshaft | Ductile Iron |
| Crankshaft Diameters: | |
| At Tapered Roller Bearings | 3.15 in. |
| At Crankpin Bearings | 2.25 in. |
| Crosshead (Wrist) Pin, Case-Hardened and Ground | AISI 8620 |
| Main Bearings, Tapered Roller | Timken® |
| Crankpin Bearings, Precision Automotive | Babbitt-Lined |
| Extension (Pony) Rod, Integral w/ Plungers | 416 S.ST. |
| Connecting Rod, Automotive Type | Ductile Iron |
| Average Crosshead Speed @ 600 rpm..... | 225 fpm |
| Minimum Life Expectancy, Main Bearings, L ₁₀ | 15,000+ hr. |

LIQUID END ENGINEERING DATA

| | |
|---|-------------------|
| Max. Continuous Working Pressure | 1,683 psi |
| Hydrostatic Test | 2,500 psi |
| Liquid End Materials, A.S.T.M. | |
| Ductile Iron | A536 80-55-06 |
| Carbon Steel Block | A516 Gr. 70 |
| Stainless Steel Block | 316 or 2205 S.ST. |
| Piston Cup | HSN and Kevlar |
| Liner | White Ceramic |
| Plunger Chromium Oxide-Coated | 416 S.ST. |
| Packing Types Available | |
| Gland Adjustable, Braided Teflon and Kevlar | HI/LO |
| Gland-loaded, Non-Adjustable | Style 858 |
| Spring-loaded, Braided Teflon & Kevlar | Style 140 |
| Spring-loaded, Garlock | Style 892IK |
| Retainer Plates, Steel, A.S.T.M. | A36 |
| Seals, Stuffing Boxes, Valve Covers | Buna-N |
| Bolting, High Strength, Heat Treated | Alloy Steel |
| Valve Types Available | |
| Standard, Abrasion Resistant | 17-4PH S.ST. |
| Optional, Disc, Hardened and Lapped | 17-4PH S.ST. |
| Valve Spring Material | Inconel® |
| Valve Seat, Liquid Passage Area | |
| Plate (disc) Valves, (Delrin or S.S.) | 1.4 sq.in. |
| Abrasion Resistant Valve | 0.958 sq.in. |
| Avg. Liquid Velocity with 2 1/4" plunger @ 600 rpm | |
| thru Disc Valves | 6.5 fps |
| thru Abrasion Resistant Valves | 9.8 fps |
| thru Suction Manifold | 4.5 fps |
| thru Discharge Manifold | 9.7 fps |

All drawings and specifications subject to change without notice.

SC-45L Triplex Pump



740 EAST 9TH STREET,
ASHLAND, OHIO 44805
WWW.MYERSAPLEX.COM

269 TRILLIUM DRIVE, KITCHENER,
ONTARIO, CANADA N2G 4W5
WWW.MYERSAPLEX.COM

Inconel® is a registered trademark of the Special Metals family of companies
Timken® is a registered trademark of The Timken Company
Myers® is a registered trademark of Pentair Ltd.

Because we are continuously improving our products and services, Pentair reserves the right to change specifications without prior notice.
MA3034 03/13/13 © 2013 Pentair Ltd. All Rights Reserved.

www.powerzone.com