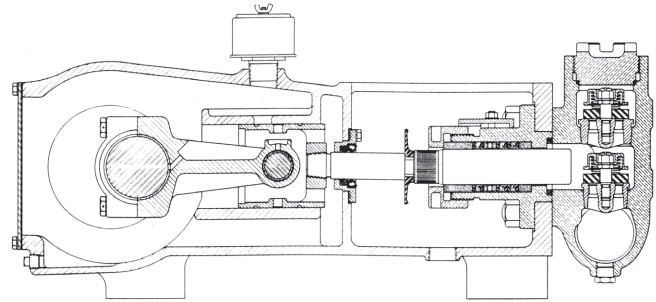


MYERS® APLEX SERIES

SC-95 TRIPLEX PLUNGER PUMP



Intermittent Duty Only

No. of plungers.....	3
Maximum rated speed.....	550 rpm
Stroke length.....	3.00 in. 76.2 mm
Maximum rated power.....	132 HP 98.3 KW
Maximum rod load	9,504 lb. 42.19 kN
Weight.....	920 lbs.

ENGLISH UNITS

SC-95

PLUNGER SIZE IN.	STUFFING BOX BORE IN.	MAX PSI.	* GALLON PER/REV.	200 RPM US GPM	250 RPM US GPM	350 RPM US GPM	450 RPM US GPM	550 RPM US GPM
2.500	3.250	1936	0.191	38.2	47.8	66.9	86.1	105.2
2.375	3.250	2145	0.173	34.5	43.2	60.4	77.7	94.9
2.250	3.250	2390	0.155	31.0	38.7	54.2	69.7	85.2
2.125	2.875	2680	0.138	27.6	34.5	48.4	62.2	76.0
2.000	2.875	3025	0.122	24.5	30.6	42.8	55.1	67.3
1.875	2.875	3441	0.108	21.5	26.9	37.7	48.4	59.2

*HP REQUIRED @ RPM***

48.0	60.0	84.0	108.1	132.0
------	------	------	-------	-------

METRIC UNITS

SC-95

PLUNGER SIZE MM.	STUFFING BOX BORE MM.	MAX PRESS. BAR	* LITER PER/REV.	200 RPM LPM	250 RPM LPM	350 RPM LPM	450 RPM LPM	550 RPM LPM
63.5	82.6	133.5	0.724	144.8	181.0	253.4	325.8	398.3
60.3	82.6	147.9	0.653	130.7	163.3	228.7	294.0	359.4
57.2	82.6	164.8	0.586	117.3	146.6	205.2	263.9	322.5
54.0	73.0	184.8	0.523	104.6	130.8	183.1	235.4	287.7
50.8	73.0	208.6	0.463	92.7	115.8	162.2	208.5	254.8
47.6	73.0	237.2	0.407	81.5	101.8	142.6	183.3	224.0

*KW REQUIRED @ RPM***

35.8	44.7	62.6	800.6	98.4
------	------	------	-------	------

**Displacement based on 100% Volumetric Efficiency*

***Power based on 90% Mechanical Efficiency*

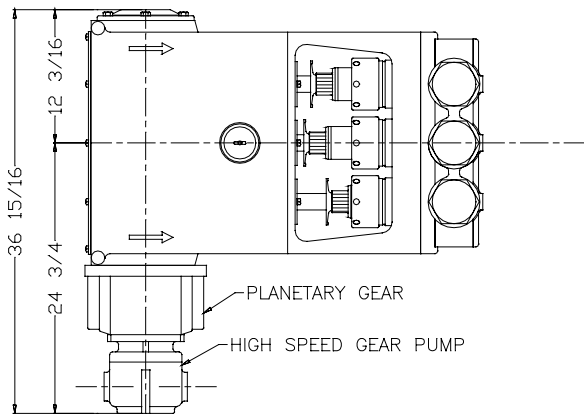
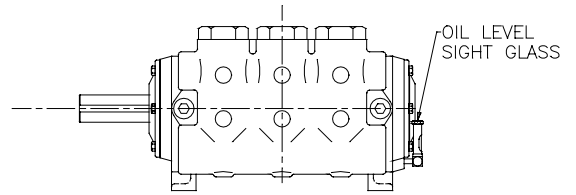
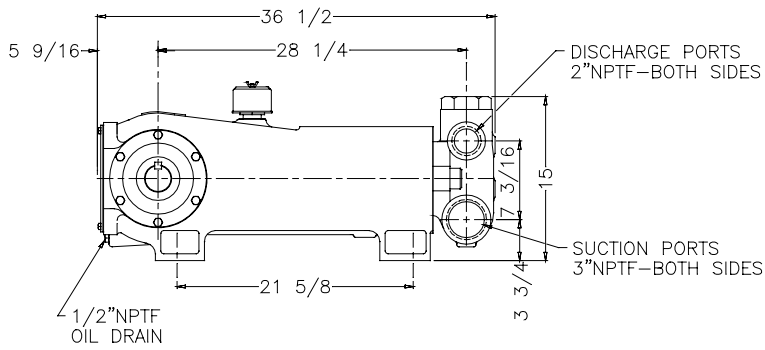
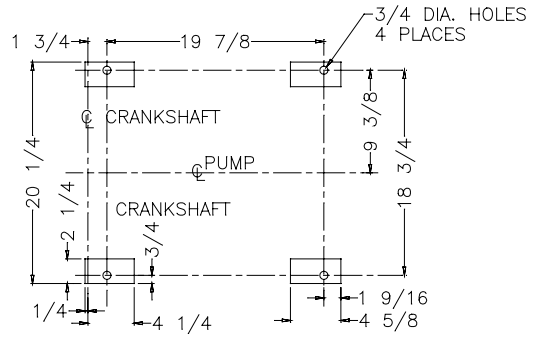
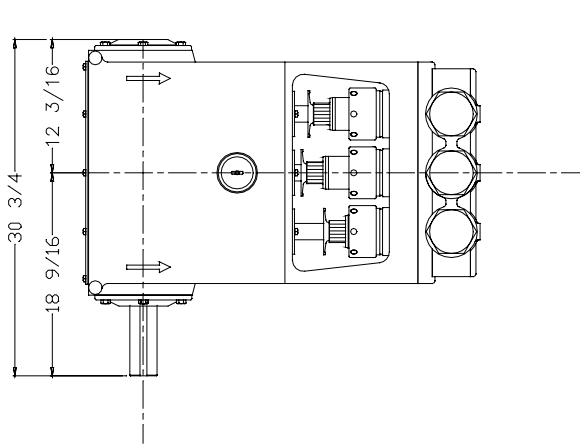
$$IHP = \frac{USGPM \times (\text{Discharge psig} - 1/2 \text{ Suction psig})}{1542}$$

$$IKW = \frac{M^3/HR \times (\text{Discharge Bar} - 1/2 \text{ Suction Bar})}{17.99}$$

$$PUMP \text{ RPM} = \frac{USGPM \text{ Desired}}{USGPM \text{ per Revolution of Selected Plunger}}$$

$$PUMP \text{ RPM} = \frac{M^3/HR \text{ Desired}}{M^3 \text{ per Revolution of Selected Plunger}}$$

SC-95 Triplex Pump



ENGINEERING DATA

SC-95 Triplex Pump

POWER END ENGINEERING DATA

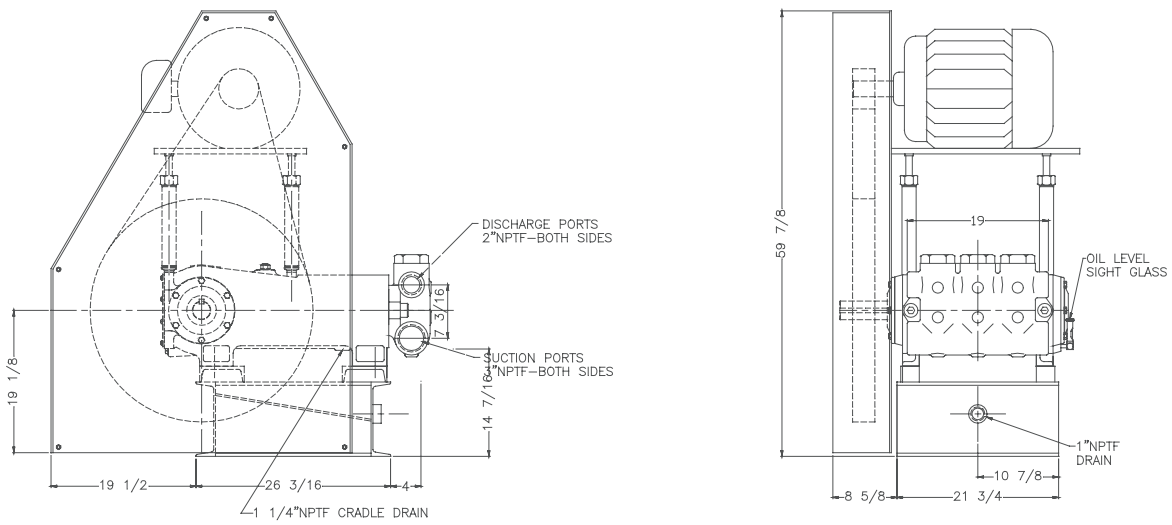
Max. Input Power @ Speed	132 HP @ 550 rpm
Rated Continuous Plunger Load	9,504 lb.
Normal Continuous Speed Range	150 to 380 rpm
Minimum Speed	100 rpm
Oil Capacity	9 U.S. Qrts
Power End Oiling System	Splash
Power Frame, One-Piece	Cast Iron
Crosshead, Full Cylindrical	Cast Iron
Crosshead, Dia. x Length.....	4 3/4 x 5 in.
Crankshaft	Ductile Iron
Crankshaft Diameters:	
At Tapered Roller Bearings	2 5/8 in.
At Crankpin Bearings, Dia. x Length.....	3 1/2 x 3 in.
Crosshead (Wrist) Pin, Case-Hardened and Ground	AISI 8620
Main Bearings, Tapered Roller	Timken®
Crankpin Bearings, Precision Automotive	Babbitt-Lined
Extension (Pony) Rod Integral w/ Plungers	17-4 PH S.ST.
Connecting Rod, Automotive Type	Ductile Iron
Average Crosshead Speed @ 450 rpm	225 fpm
Minimum Life Expectancy, Main Bearings, L ₁₀	18,000+ hr.

LIQUID END ENGINEERING DATA

Max. Continuous Working Pressure	3,500 psi
Hydrostatic Test	5,250 psi
Liquid End Materials, A.S.T.M.	
Ductile Iron	A536 80-55-06
Carbon Steel.....	A516 Gr.70
Stainless Steel	316 or 2205 S.ST.
Plunger Type “Rokide” Stainless Steel, (Chromium Oxide-Coated)	316 S.S.
Stuffing boxes, Field-Removable and Replaceable, Carbon Steel	A-536 Gr 80-55-06
Packing Types Available:	
Gland-loaded, Non-Adjustable	Style 838
Spring-loaded, Braided Teflon & Kevlar	Style 140
Spring-loaded, cup-type	Style 120X
Spring-loaded, Garlock	Style 892IK
Valve Cover and Cyl. Head Plugs	316 S.ST.
Retainer Plates, Steel, A.S.T.M.	A36
Seals, Stuffing Boxes, Valve Covers	Buna-N
Valve Type, Double Stem-Guided	17-4PH S.ST.
Valve Spring Material	Inconel®
Valve Seat, Liquid Passage Area	2.40 sq.in.
Avg. Liquid Velocity, with 2 1/2” plunger @ 400 RPM	
thru Valve	7.12 fps
thru Suction Manifold.....	3.31 fps
thru Discharge Manifold.....	8.31 fps

All drawings and specifications subject to change without notice.

SC-95 Triplex Pump



740 EAST 9TH STREET,
ASHLAND, OHIO 44805
WWW.MYERSAPLEX.COM

269 TRILLIUM DRIVE, KITCHENER,
ONTARIO, CANADA N2G 4W5
WWW.MYERSAPLEX.COM

Inconel® is a registered trademark of the Special Metals family of companies
Timken® is a registered trademark of The Timken Company
Myers® is a registered trademark of Pentair Ltd.

Because we are continuously improving our products and services, Pentair reserves the right to change specifications without prior notice.
MA3009 03/11/13 © 2013 Pentair Ltd. All Rights Reserved.

www.powerzone.com